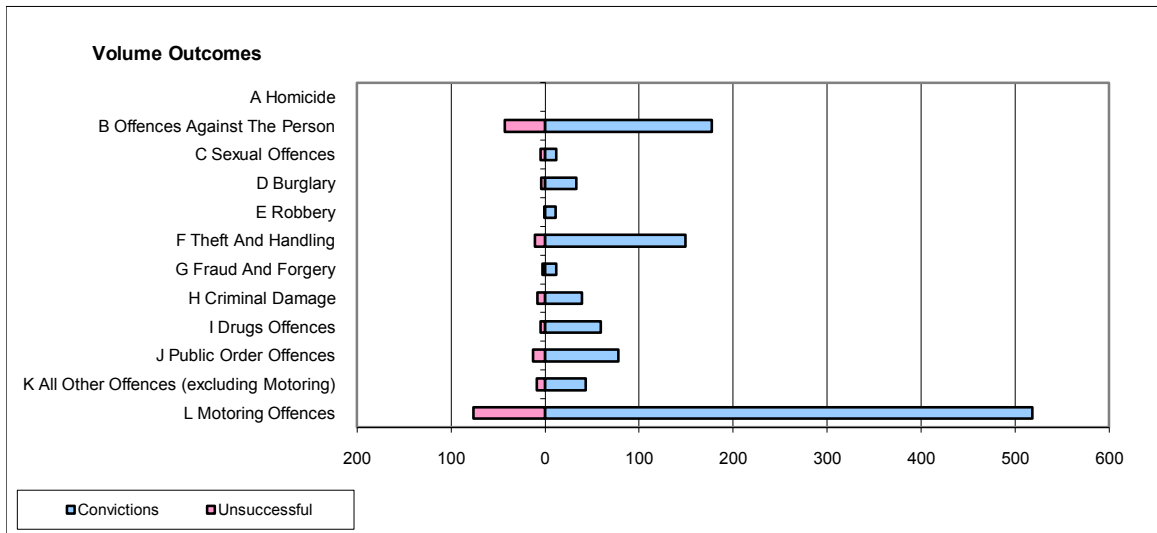
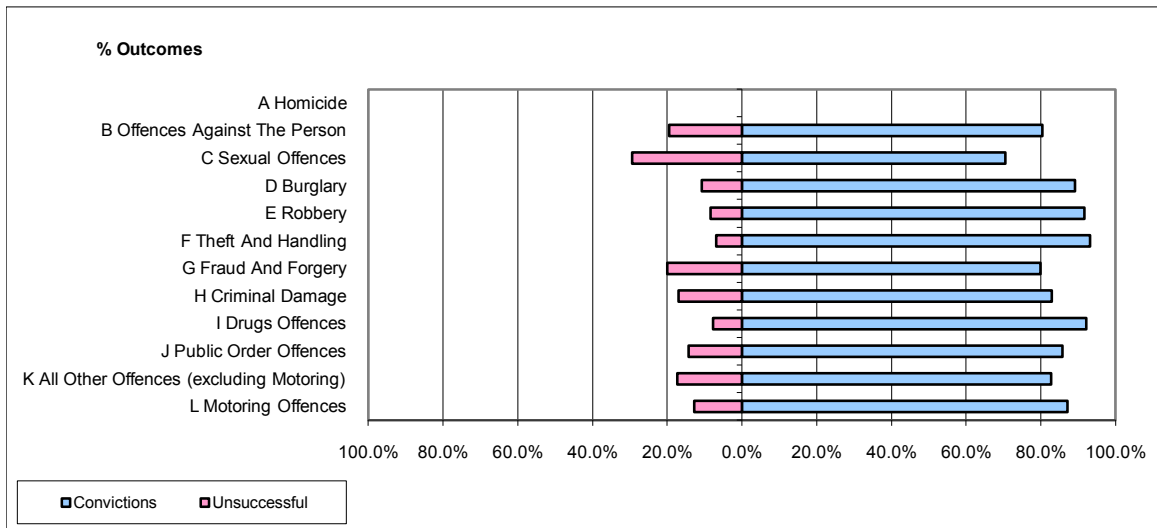


**CPS OUTCOMES BY PRINCIPAL OFFENCE CATEGORY**

**November 2009**

**P22-Leicestershire**



	Convictions		Unsuccessful	
	Number of Defendants	%	Number of Defendants	%
<b>A Homicide</b>	0	0	0	0
<b>B Offences Against The Person</b>	177	80.5%	43	19.5%
<b>C Sexual Offences</b>	12	70.6%	5	29.4%
<b>D Burglary</b>	33	89.2%	4	10.8%
<b>E Robbery</b>	11	91.7%	1	8.3%
<b>F Theft And Handling</b>	149	93.1%	11	6.9%
<b>G Fraud And Forgery</b>	12	80.0%	3	20.0%
<b>H Criminal Damage</b>	39	83.0%	8	17.0%
<b>I Drugs Offences</b>	59	92.2%	5	7.8%
<b>J Public Order Offences</b>	78	85.7%	13	14.3%
<b>K All Other Offences (excluding Motoring)</b>	43	82.7%	9	17.3%
<b>L Motoring Offences</b>	518	87.2%	76	12.8%
<b>Admin Finalisations</b>	0	0.0%	31	100.0%
<b>TOTAL</b>	<b>1,131</b>	<b>84.4%</b>	<b>209</b>	<b>15.6%</b>