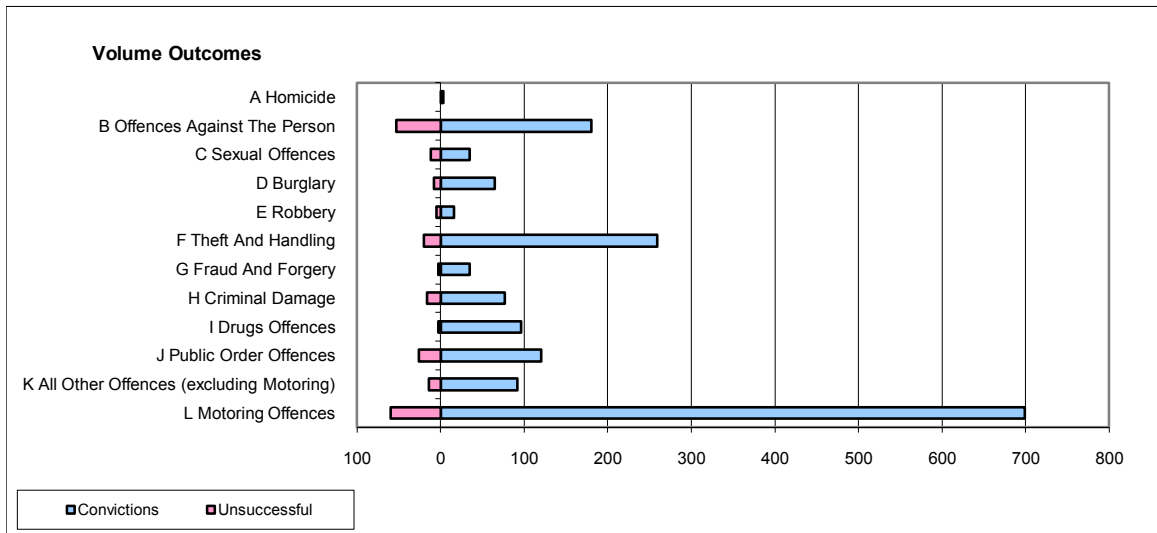
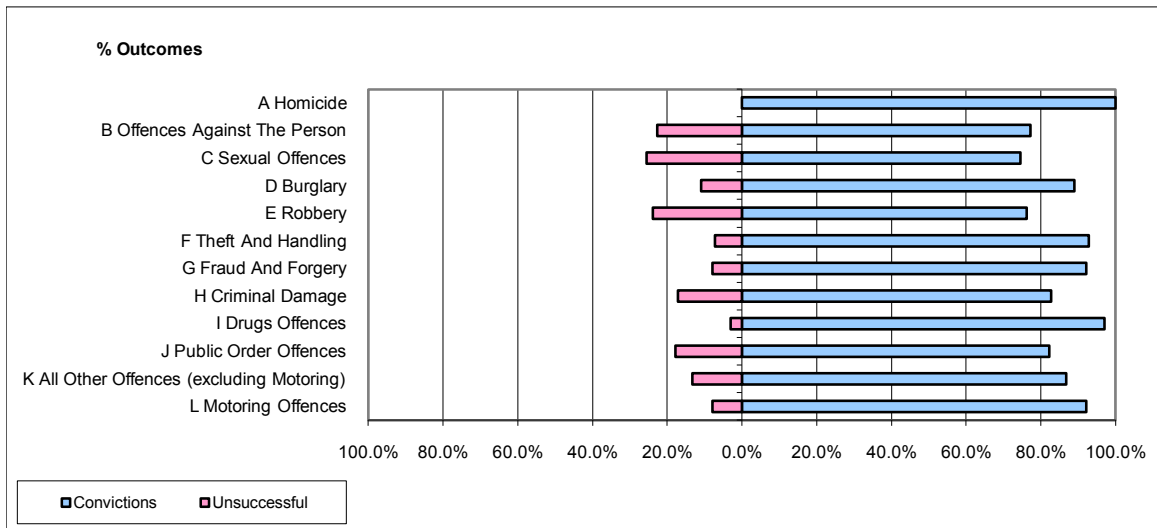


CPS OUTCOMES BY PRINCIPAL OFFENCE CATEGORY

November 2009

P20-Kent



	Convictions		Unsuccessful	
	Number of Defendants	%	Number of Defendants	%
A Homicide	3	100.0%	0	0.0%
B Offences Against The Person	180	77.3%	53	22.7%
C Sexual Offences	35	74.5%	12	25.5%
D Burglary	65	89.0%	8	11.0%
E Robbery	16	76.2%	5	23.8%
F Theft And Handling	259	92.8%	20	7.2%
G Fraud And Forgery	35	92.1%	3	7.9%
H Criminal Damage	77	82.8%	16	17.2%
I Drugs Offences	96	97.0%	3	3.0%
J Public Order Offences	120	82.2%	26	17.8%
K All Other Offences (excluding Motoring)	92	86.8%	14	13.2%
L Motoring Offences	699	92.1%	60	7.9%
Admin Finalisations	0	0.0%	22	100.0%
TOTAL	1,677	87.4%	242	12.6%