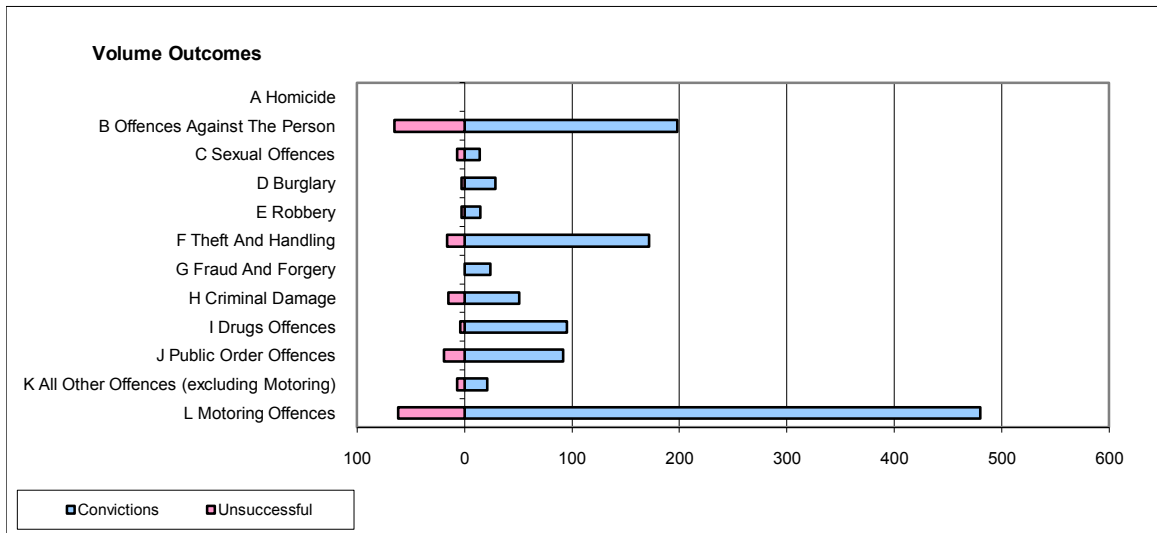
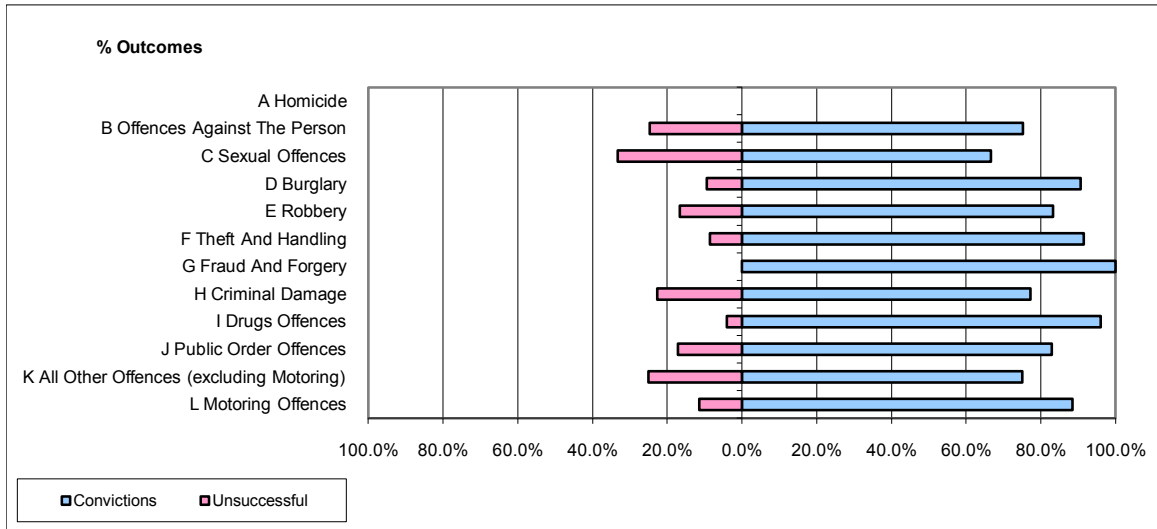


CPS OUTCOMES BY PRINCIPAL OFFENCE CATEGORY

November 2009

P18-Hertfordshire



	Convictions		Unsuccessful	
	Number of Defendants	%	Number of Defendants	%
A Homicide	0	0	0	0
B Offences Against The Person	198	75.3%	65	24.7%
C Sexual Offences	14	66.7%	7	33.3%
D Burglary	29	90.6%	3	9.4%
E Robbery	15	83.3%	3	16.7%
F Theft And Handling	172	91.5%	16	8.5%
G Fraud And Forgery	24	100.0%	0	0.0%
H Criminal Damage	51	77.3%	15	22.7%
I Drugs Offences	95	96.0%	4	4.0%
J Public Order Offences	92	82.9%	19	17.1%
K All Other Offences (excluding Motoring)	21	75.0%	7	25.0%
L Motoring Offences	480	88.6%	62	11.4%
Admin Finalisations	0	0.0%	17	100.0%
TOTAL	1,191	84.5%	218	15.5%