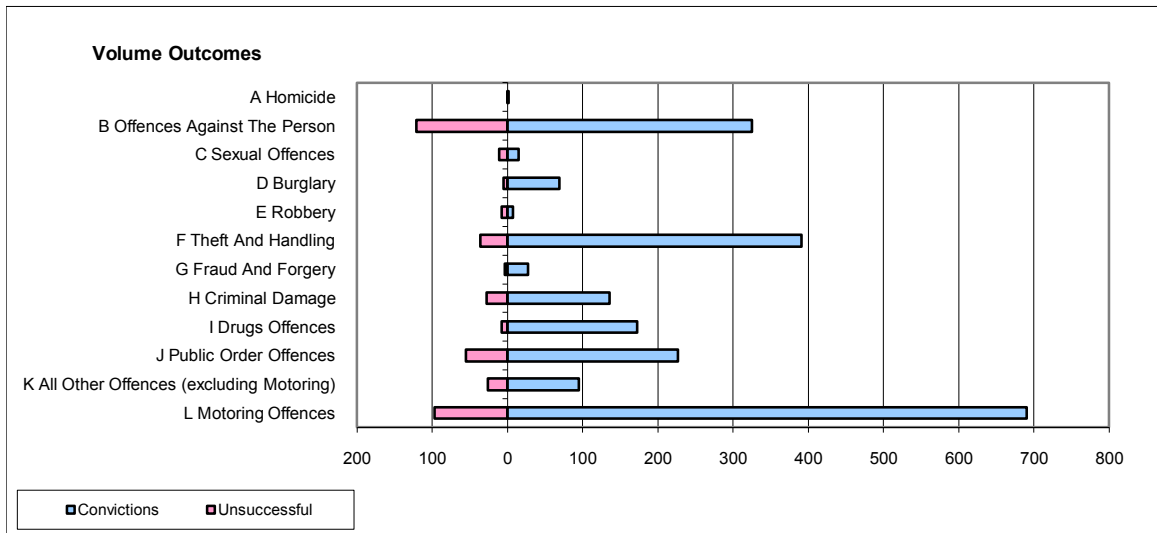
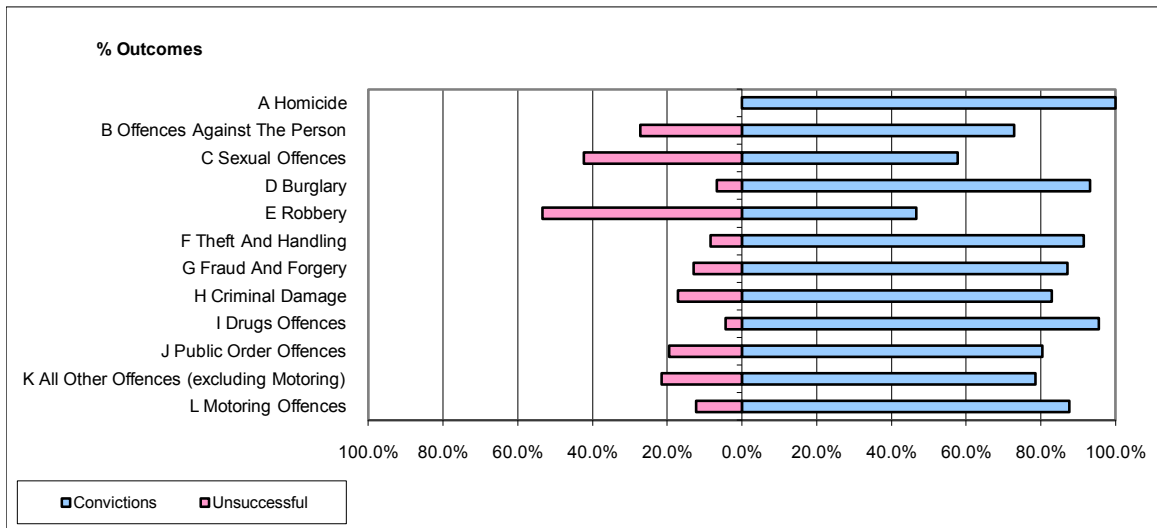


CPS OUTCOMES BY PRINCIPAL OFFENCE CATEGORY

November 2009

P17-Hampshire



	Convictions		Unsuccessful	
	Number of Defendants	%	Number of Defendants	%
A Homicide	1	100.0%	0	0.0%
B Offences Against The Person	325	72.9%	121	27.1%
C Sexual Offences	15	57.7%	11	42.3%
D Burglary	69	93.2%	5	6.8%
E Robbery	7	46.7%	8	53.3%
F Theft And Handling	391	91.6%	36	8.4%
G Fraud And Forgery	27	87.1%	4	12.9%
H Criminal Damage	136	82.9%	28	17.1%
I Drugs Offences	172	95.6%	8	4.4%
J Public Order Offences	227	80.5%	55	19.5%
K All Other Offences (excluding Motoring)	95	78.5%	26	21.5%
L Motoring Offences	690	87.7%	97	12.3%
Admin Finalisations	0	0.0%	18	100.0%
TOTAL	2,155	83.8%	417	16.2%