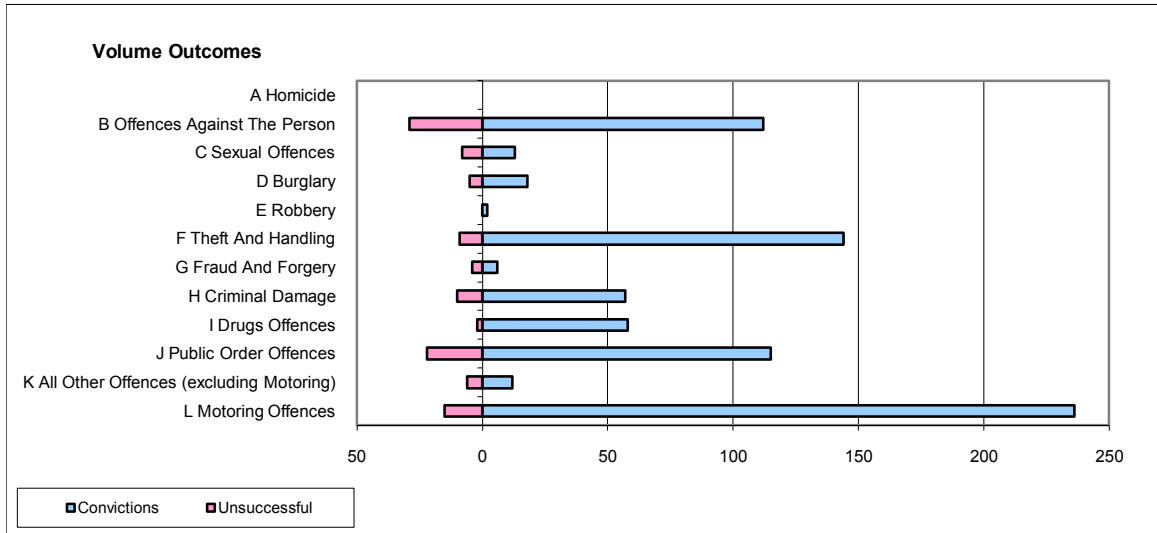
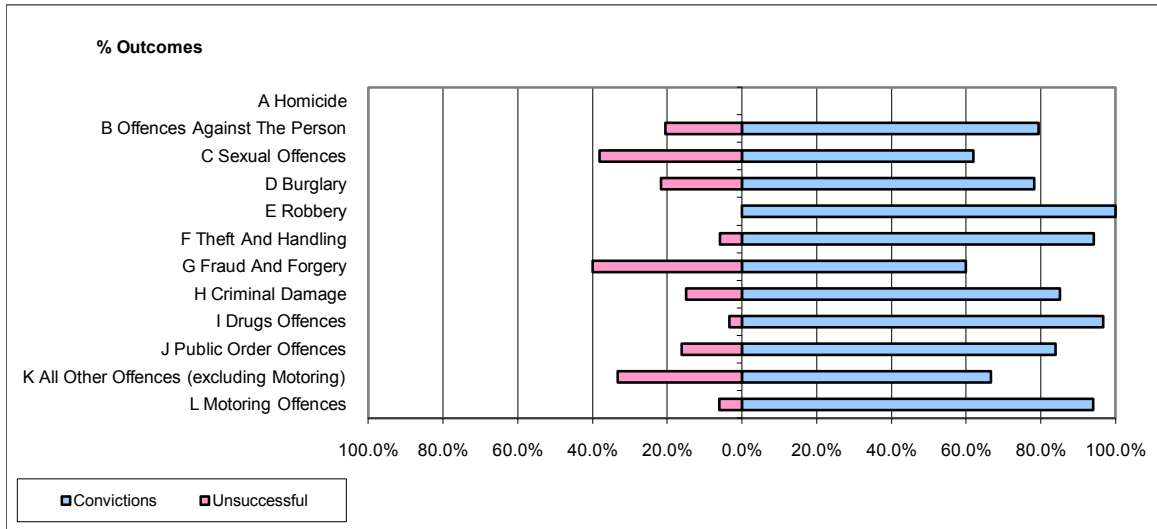


CPS OUTCOMES BY PRINCIPAL OFFENCE CATEGORY

November 2009

P16-Gwent



	Convictions		Unsuccessful	
	Number of Defendants	%	Number of Defendants	%
A Homicide	0	0	0	0
B Offences Against The Person	112	79.4%	29	20.6%
C Sexual Offences	13	61.9%	8	38.1%
D Burglary	18	78.3%	5	21.7%
E Robbery	2	100.0%	0	0.0%
F Theft And Handling	144	94.1%	9	5.9%
G Fraud And Forgery	6	60.0%	4	40.0%
H Criminal Damage	57	85.1%	10	14.9%
I Drugs Offences	58	96.7%	2	3.3%
J Public Order Offences	115	83.9%	22	16.1%
K All Other Offences (excluding Motoring)	12	66.7%	6	33.3%
L Motoring Offences	236	94.0%	15	6.0%
Admin Finalisations	0	0.0%	2	100.0%
TOTAL	773	87.3%	112	12.7%