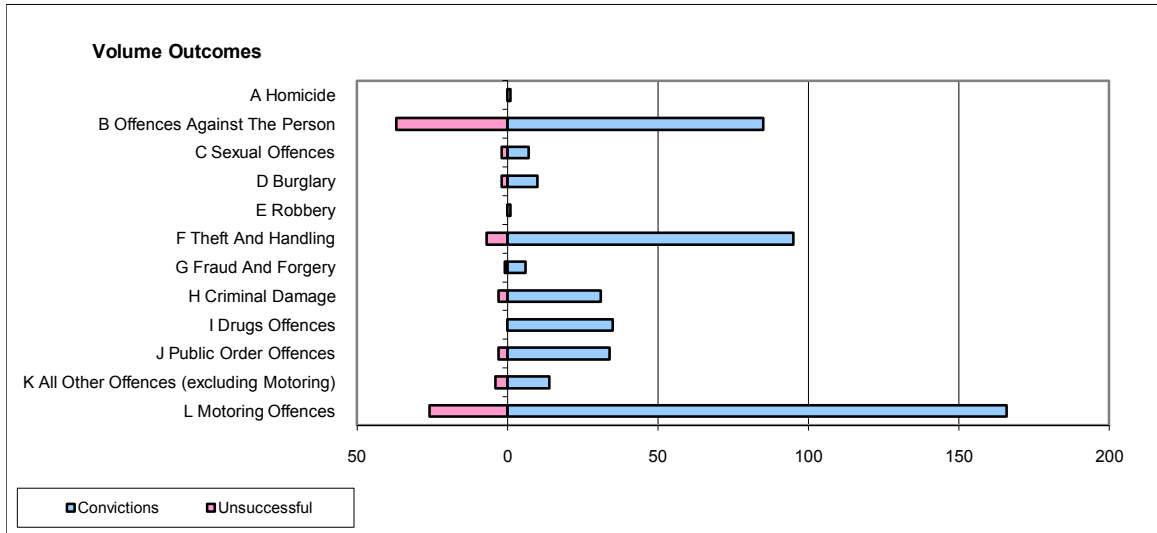
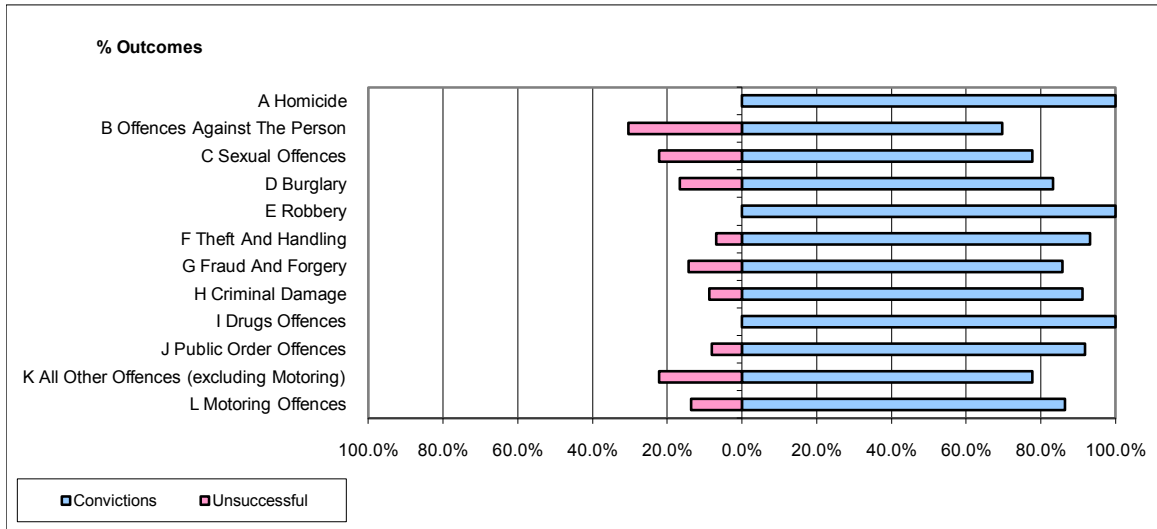


CPS OUTCOMES BY PRINCIPAL OFFENCE CATEGORY

November 2009

P14-Gloucestershire



	Convictions		Unsuccessful	
	Number of Defendants	%	Number of Defendants	%
A Homicide	1	100.0%	0	0.0%
B Offences Against The Person	85	69.7%	37	30.3%
C Sexual Offences	7	77.8%	2	22.2%
D Burglary	10	83.3%	2	16.7%
E Robbery	1	100.0%	0	0.0%
F Theft And Handling	95	93.1%	7	6.9%
G Fraud And Forgery	6	85.7%	1	14.3%
H Criminal Damage	31	91.2%	3	8.8%
I Drugs Offences	35	100.0%	0	0.0%
J Public Order Offences	34	91.9%	3	8.1%
K All Other Offences (excluding Motoring)	14	77.8%	4	22.2%
L Motoring Offences	166	86.5%	26	13.5%
Admin Finalisations	0	0.0%	3	100.0%
TOTAL	485	84.6%	88	15.4%