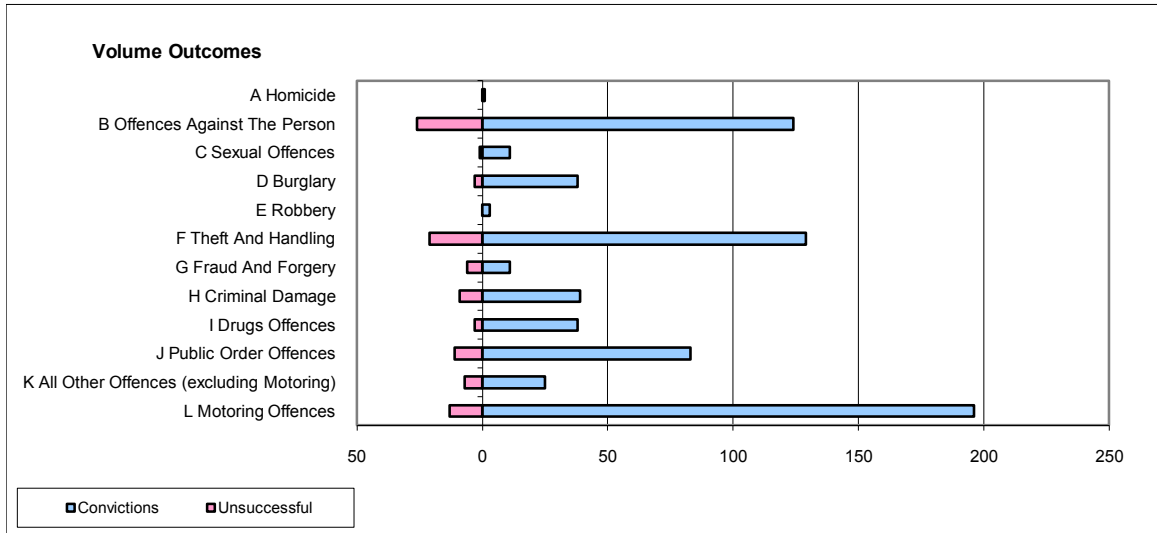
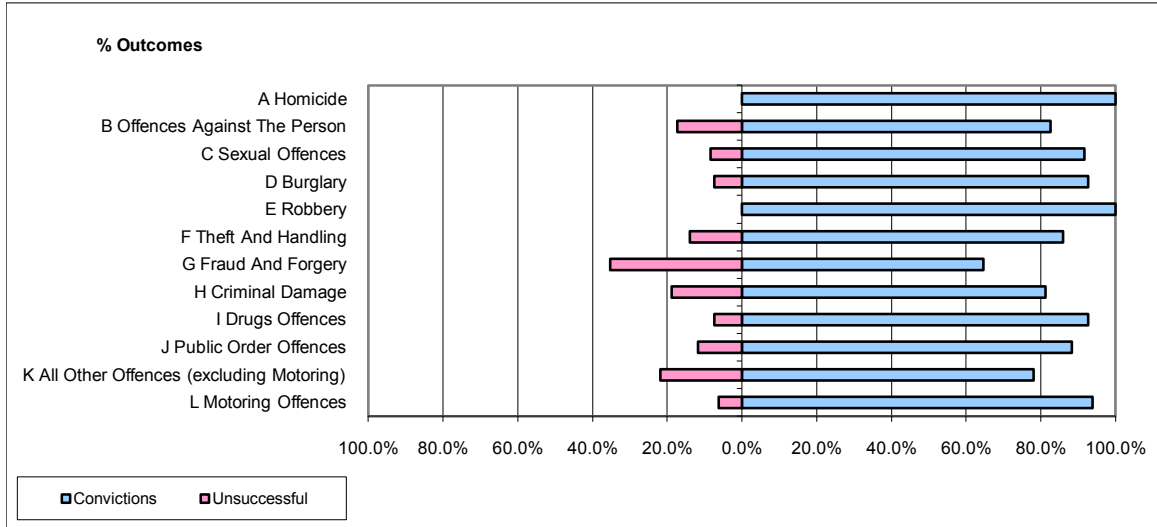


**CPS OUTCOMES BY PRINCIPAL OFFENCE CATEGORY**

**November 2009**

**P11-Durham**



	Convictions		Unsuccessful	
	Number of Defendants	%	Number of Defendants	%
<b>A Homicide</b>	1	100.0%	0	0.0%
<b>B Offences Against The Person</b>	124	82.7%	26	17.3%
<b>C Sexual Offences</b>	11	91.7%	1	8.3%
<b>D Burglary</b>	38	92.7%	3	7.3%
<b>E Robbery</b>	3	100.0%	0	0.0%
<b>F Theft And Handling</b>	129	86.0%	21	14.0%
<b>G Fraud And Forgery</b>	11	64.7%	6	35.3%
<b>H Criminal Damage</b>	39	81.3%	9	18.8%
<b>I Drugs Offences</b>	38	92.7%	3	7.3%
<b>J Public Order Offences</b>	83	88.3%	11	11.7%
<b>K All Other Offences (excluding Motoring)</b>	25	78.1%	7	21.9%
<b>L Motoring Offences</b>	196	93.8%	13	6.2%
<b>Admin Finalisations</b>	0	0.0%	5	100.0%
<b>TOTAL</b>	<b>698</b>	<b>86.9%</b>	<b>105</b>	<b>13.1%</b>