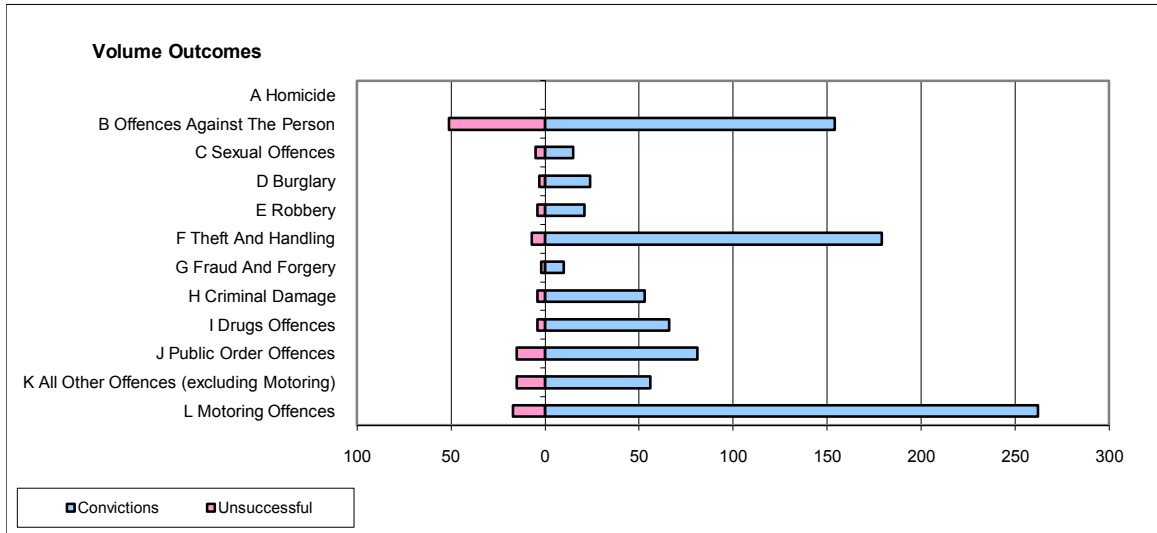
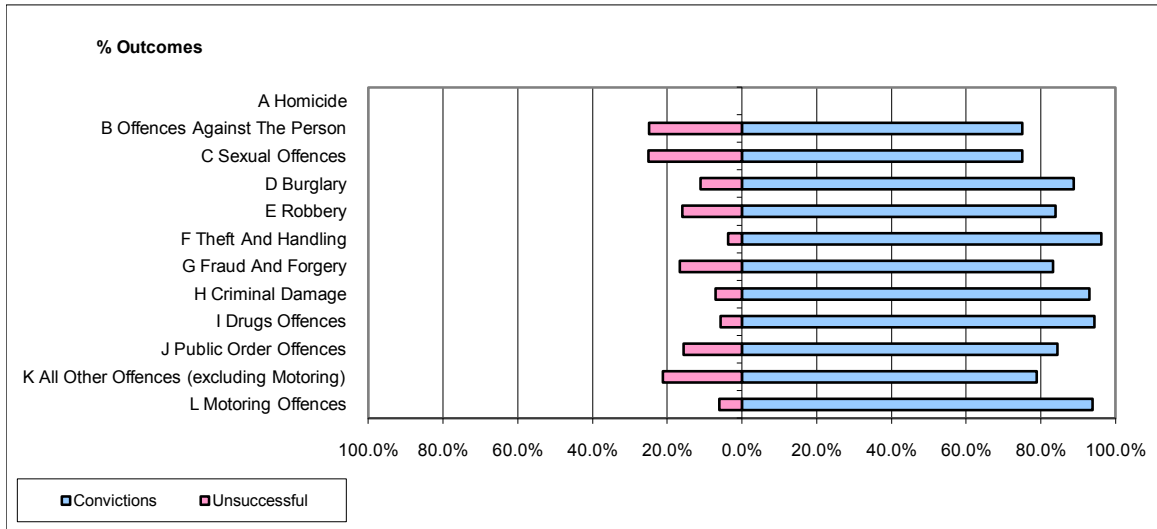


CPS OUTCOMES BY PRINCIPAL OFFENCE CATEGORY

November 2009

P08-Derbyshire



	Convictions		Unsuccessful	
	Number of Defendants	%	Number of Defendants	%
A Homicide	0	0	0	0
B Offences Against The Person	154	75.1%	51	24.9%
C Sexual Offences	15	75.0%	5	25.0%
D Burglary	24	88.9%	3	11.1%
E Robbery	21	84.0%	4	16.0%
F Theft And Handling	179	96.2%	7	3.8%
G Fraud And Forgery	10	83.3%	2	16.7%
H Criminal Damage	53	93.0%	4	7.0%
I Drugs Offences	66	94.3%	4	5.7%
J Public Order Offences	81	84.4%	15	15.6%
K All Other Offences (excluding Motoring)	56	78.9%	15	21.1%
L Motoring Offences	262	93.9%	17	6.1%
Admin Finalisations	0	0.0%	2	100.0%
TOTAL	921	87.7%	129	12.3%