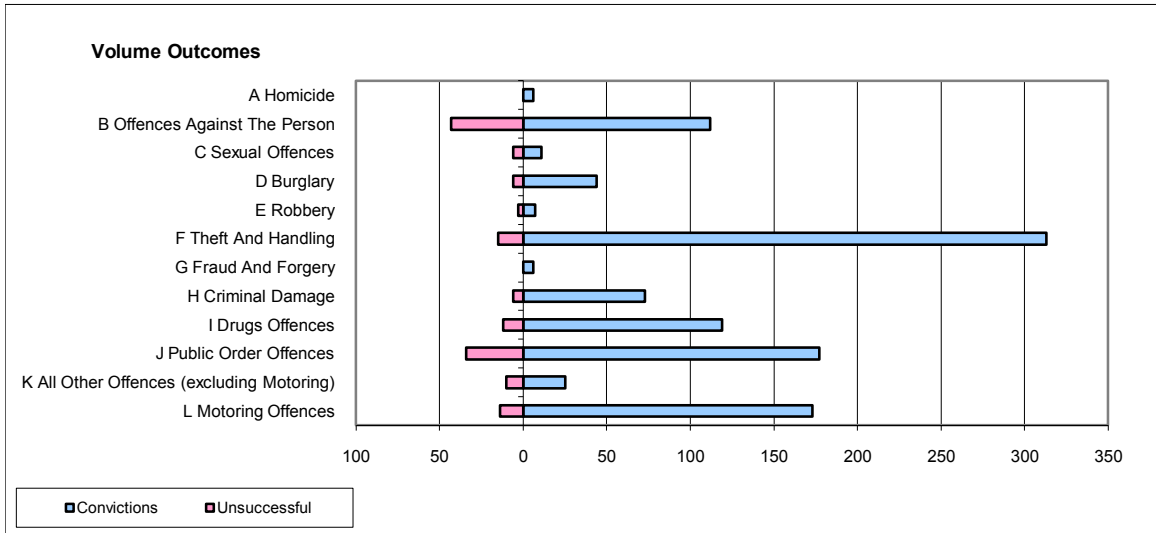
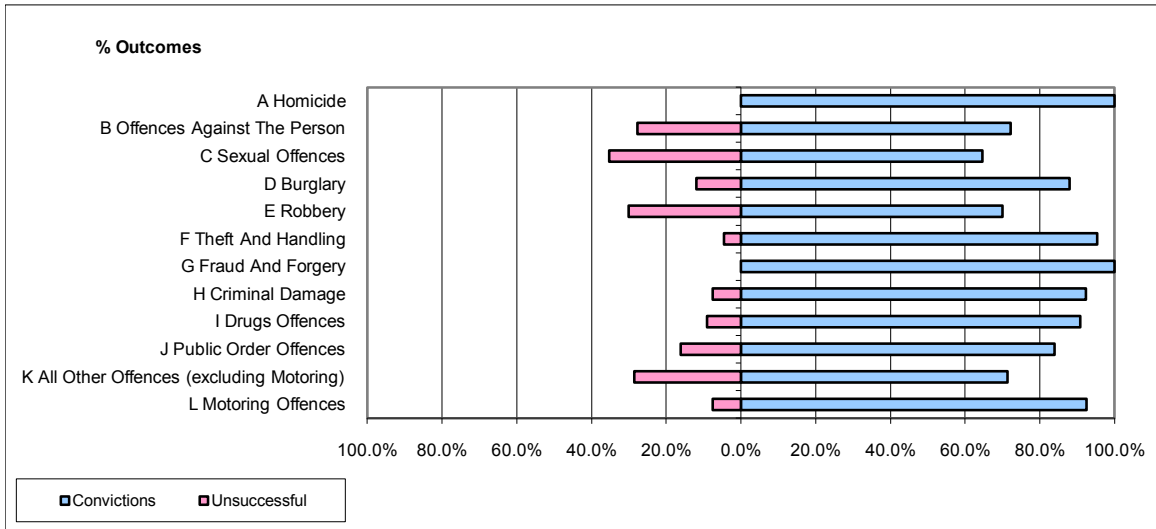


CPS OUTCOMES BY PRINCIPAL OFFENCE CATEGORY

November 2009

P06-Cleveland



| | Convictions | | Unsuccessful | |
|--|----------------------|--------------|----------------------|--------------|
| | Number of Defendants | % | Number of Defendants | % |
| A Homicide | 6 | 100.0% | 0 | 0.0% |
| B Offences Against The Person | 112 | 72.3% | 43 | 27.7% |
| C Sexual Offences | 11 | 64.7% | 6 | 35.3% |
| D Burglary | 44 | 88.0% | 6 | 12.0% |
| E Robbery | 7 | 70.0% | 3 | 30.0% |
| F Theft And Handling | 313 | 95.4% | 15 | 4.6% |
| G Fraud And Forgery | 6 | 100.0% | 0 | 0.0% |
| H Criminal Damage | 73 | 92.4% | 6 | 7.6% |
| I Drugs Offences | 119 | 90.8% | 12 | 9.2% |
| J Public Order Offences | 177 | 83.9% | 34 | 16.1% |
| K All Other Offences (excluding Motoring) | 25 | 71.4% | 10 | 28.6% |
| L Motoring Offences | 173 | 92.5% | 14 | 7.5% |
| Admin Finalisations | 0 | 0.0% | 5 | 100.0% |
| TOTAL | 1,066 | 87.4% | 154 | 12.6% |