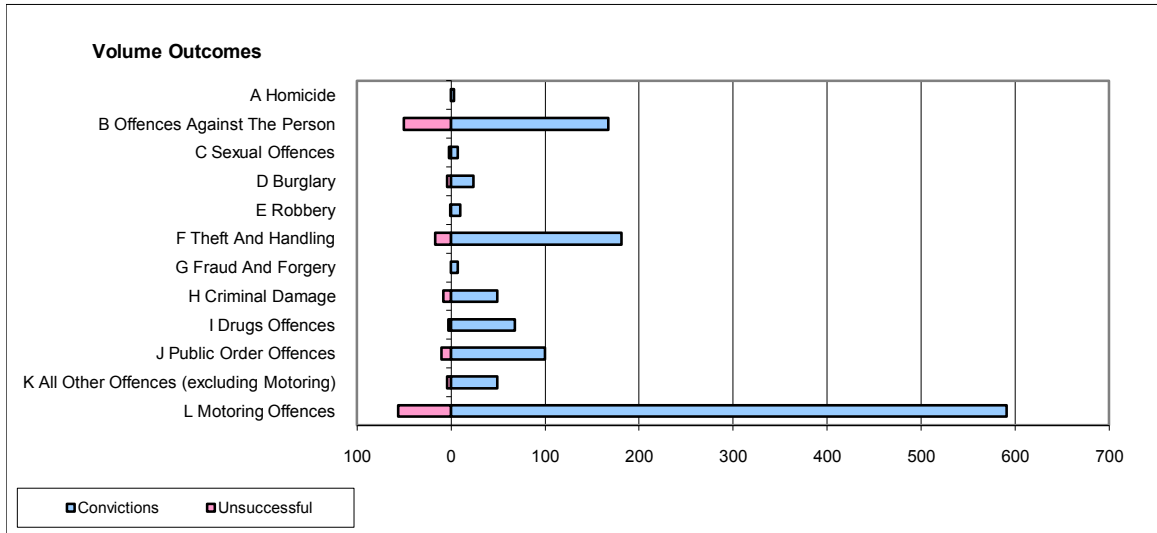
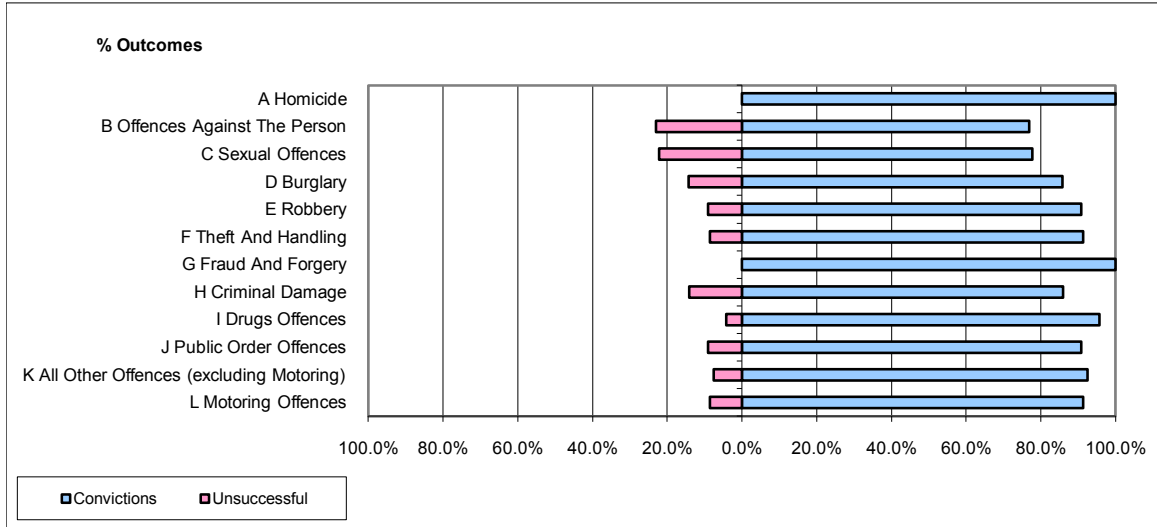


CPS OUTCOMES BY PRINCIPAL OFFENCE CATEGORY

November 2009

P04-Cheshire



	Convictions		Unsuccessful	
	Number of Defendants	%	Number of Defendants	%
A Homicide	3	100.0%	0	0.0%
B Offences Against The Person	167	77.0%	50	23.0%
C Sexual Offences	7	77.8%	2	22.2%
D Burglary	24	85.7%	4	14.3%
E Robbery	10	90.9%	1	9.1%
F Theft And Handling	181	91.4%	17	8.6%
G Fraud And Forgery	7	100.0%	0	0.0%
H Criminal Damage	49	86.0%	8	14.0%
I Drugs Offences	68	95.8%	3	4.2%
J Public Order Offences	100	90.9%	10	9.1%
K All Other Offences (excluding Motoring)	49	92.5%	4	7.5%
L Motoring Offences	591	91.3%	56	8.7%
Admin Finalisations	0	0.0%	7	100.0%
TOTAL	1,256	88.6%	162	11.4%