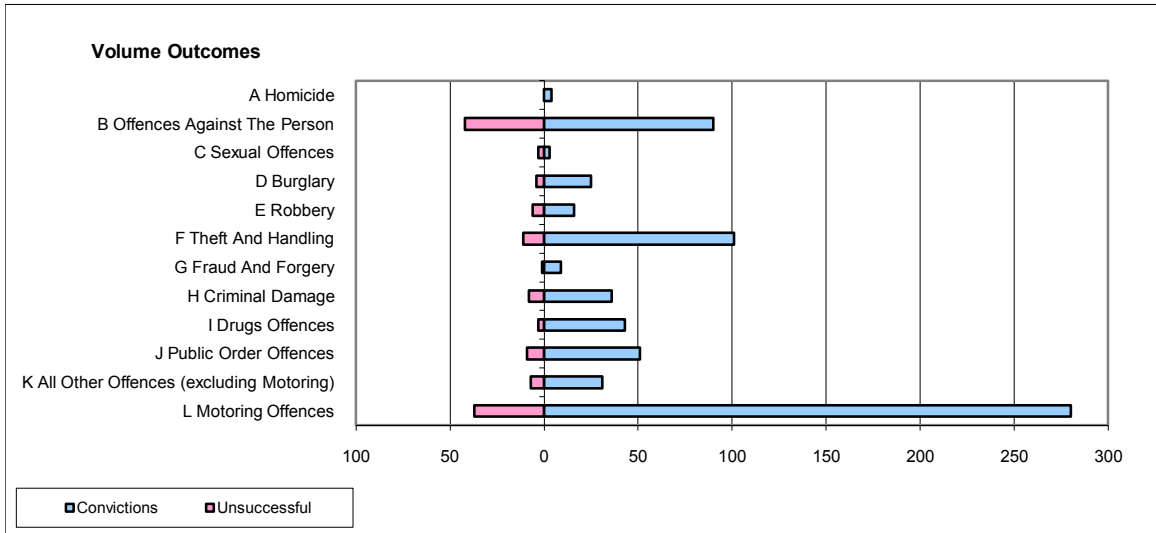
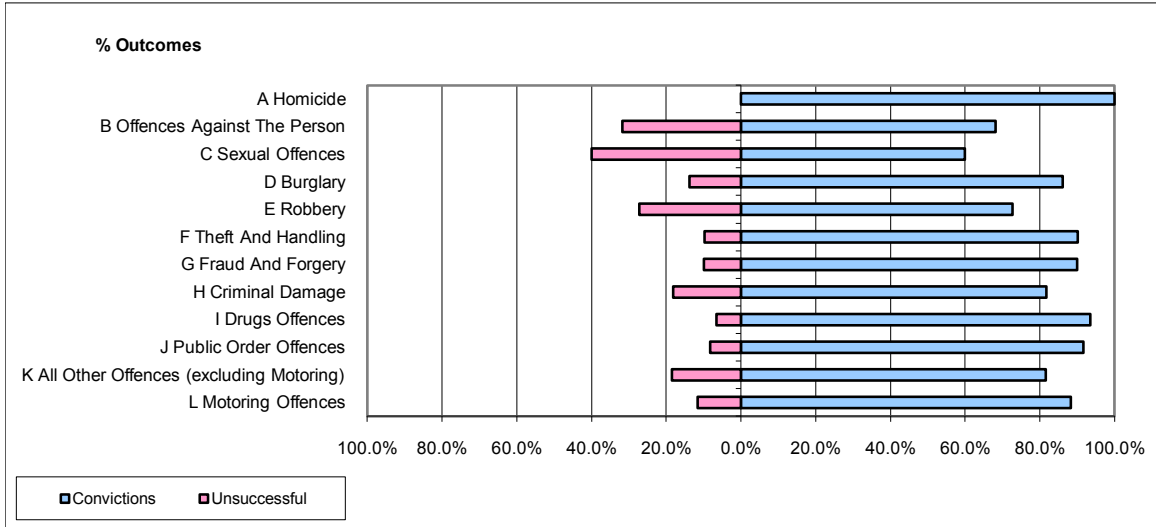


**CPS OUTCOMES BY PRINCIPAL OFFENCE CATEGORY**

**November 2009**

**P02-Bedfordshire**



	Convictions		Unsuccessful	
	Number of Defendants	%	Number of Defendants	%
<b>A Homicide</b>	4	100.0%	0	0.0%
<b>B Offences Against The Person</b>	90	68.2%	42	31.8%
<b>C Sexual Offences</b>	3	60.0%	3	40.0%
<b>D Burglary</b>	25	86.2%	4	13.8%
<b>E Robbery</b>	16	72.7%	6	27.3%
<b>F Theft And Handling</b>	101	90.2%	11	9.8%
<b>G Fraud And Forgery</b>	9	90.0%	1	10.0%
<b>H Criminal Damage</b>	36	81.8%	8	18.2%
<b>I Drugs Offences</b>	43	93.5%	3	6.5%
<b>J Public Order Offences</b>	51	91.7%	9	8.3%
<b>K All Other Offences (excluding Motoring)</b>	31	81.6%	7	18.4%
<b>L Motoring Offences</b>	280	88.3%	37	11.7%
<b>Admin Finalisations</b>	0	0.0%	9	100.0%
<b>TOTAL</b>	<b>689</b>	<b>83.1%</b>	<b>140</b>	<b>16.9%</b>