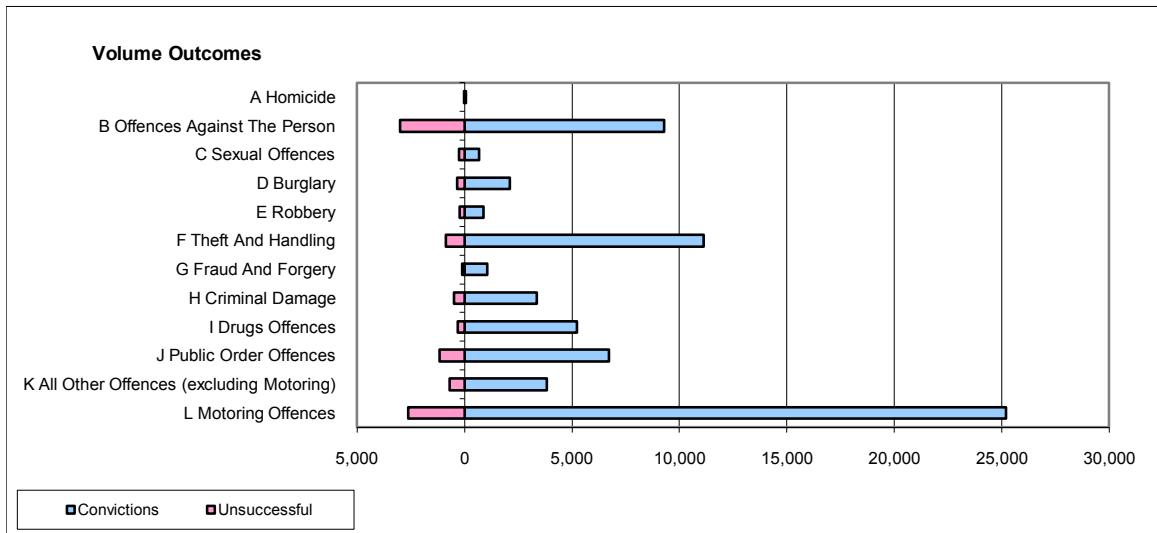
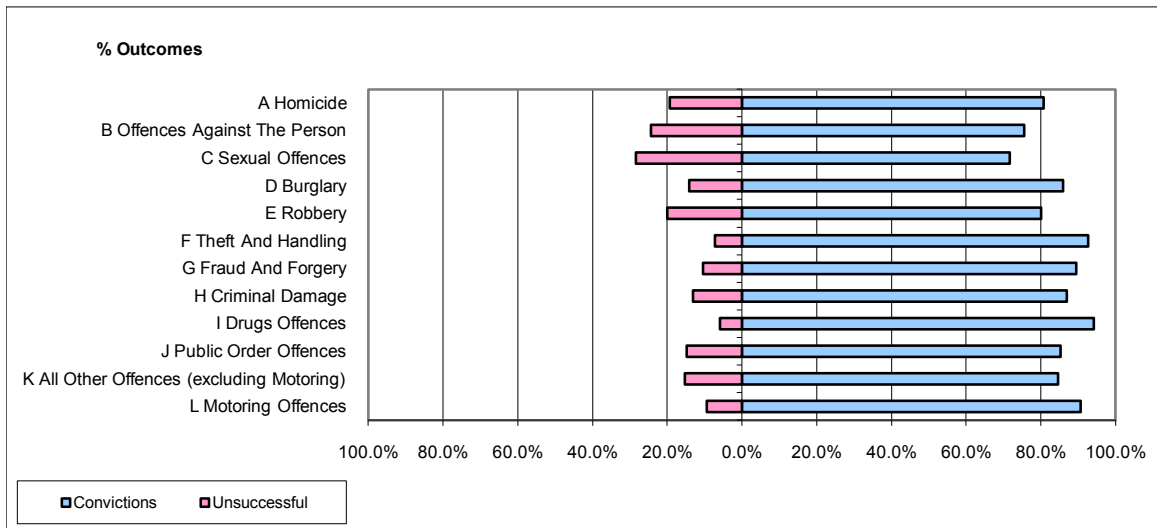


CPS OUTCOMES BY PRINCIPAL OFFENCE CATEGORY

October 2009

42 Areas



	Convictions		Unsuccessful	
	Number of Defendants	%	Number of Defendants	%
A Homicide	71	80.7%	17	19.3%
B Offences Against The Person	9,275	75.6%	2,988	24.4%
C Sexual Offences	665	71.7%	263	28.3%
D Burglary	2,117	86.0%	346	14.0%
E Robbery	881	80.0%	220	20.0%
F Theft And Handling	11,137	92.8%	869	7.2%
G Fraud And Forgery	1,067	89.5%	125	10.5%
H Criminal Damage	3,371	87.0%	505	13.0%
I Drugs Offences	5,238	94.1%	326	5.9%
J Public Order Offences	6,730	85.3%	1,162	14.7%
K All Other Offences (excluding Motoring)	3,838	84.6%	697	15.4%
L Motoring Offences	25,184	90.6%	2,610	9.4%
Admin Finalisations	0	0.0%	1,082	100.0%
TOTAL	69,574	86.1%	11,210	13.9%