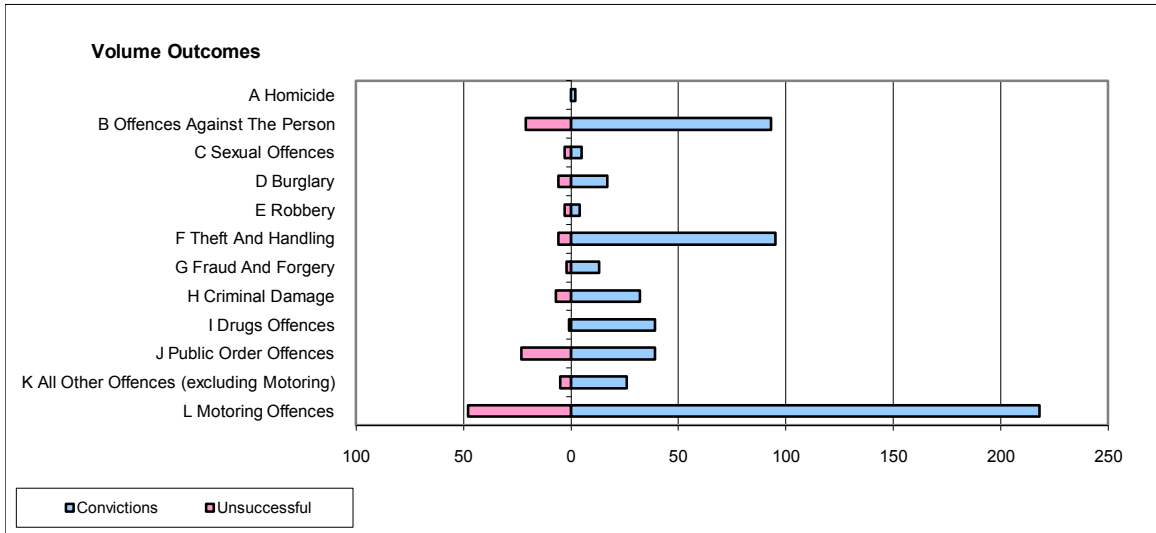
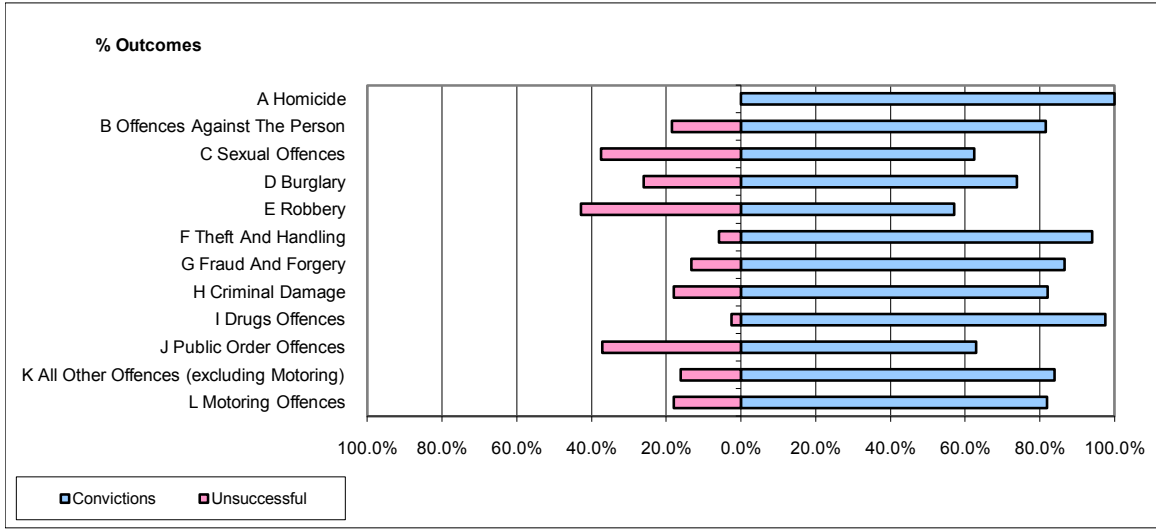


CPS OUTCOMES BY PRINCIPAL OFFENCE CATEGORY

October 2009

P43-Wiltshire



	Convictions		Unsuccessful	
	Number of Defendants	%	Number of Defendants	%
A Homicide	2	100.0%	0	0.0%
B Offences Against The Person	93	81.6%	21	18.4%
C Sexual Offences	5	62.5%	3	37.5%
D Burglary	17	73.9%	6	26.1%
E Robbery	4	57.1%	3	42.9%
F Theft And Handling	95	94.1%	6	5.9%
G Fraud And Forgery	13	86.7%	2	13.3%
H Criminal Damage	32	82.1%	7	17.9%
I Drugs Offences	39	97.5%	1	2.5%
J Public Order Offences	39	62.9%	23	37.1%
K All Other Offences (excluding Motoring)	26	83.9%	5	16.1%
L Motoring Offences	218	82.0%	48	18.0%
Admin Finalisations	0	0.0%	5	100.0%
TOTAL	583	81.8%	130	18.2%