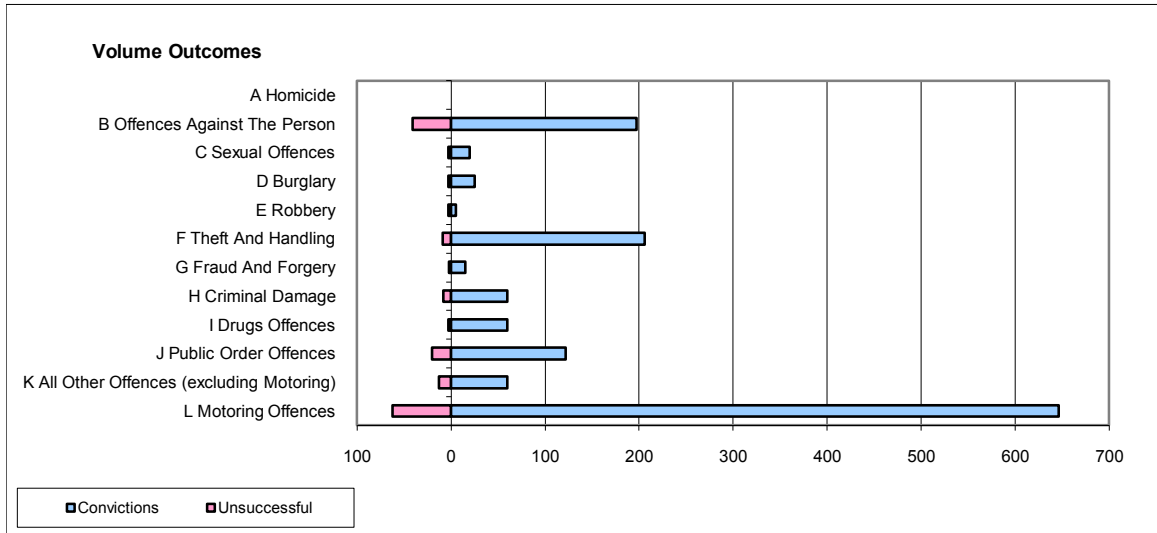
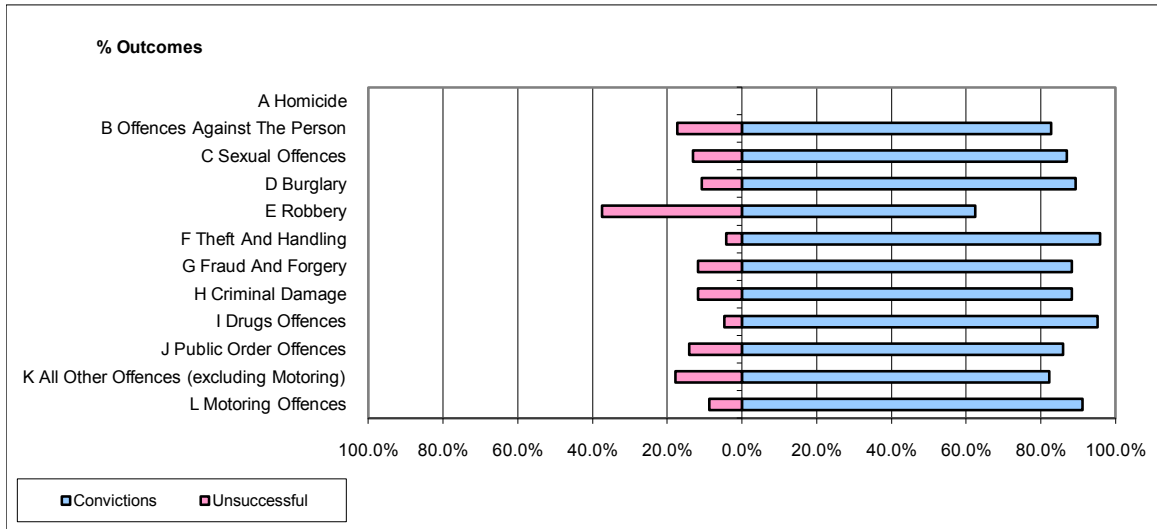


**CPS OUTCOMES BY PRINCIPAL OFFENCE CATEGORY**

**October 2009**

**P40-WestMercia**



	Convictions		Unsuccessful	
	Number of Defendants	%	Number of Defendants	%
<b>A Homicide</b>	0	0	0	0
<b>B Offences Against The Person</b>	197	82.8%	41	17.2%
<b>C Sexual Offences</b>	20	87.0%	3	13.0%
<b>D Burglary</b>	25	89.3%	3	10.7%
<b>E Robbery</b>	5	62.5%	3	37.5%
<b>F Theft And Handling</b>	206	95.8%	9	4.2%
<b>G Fraud And Forgery</b>	15	88.2%	2	11.8%
<b>H Criminal Damage</b>	60	88.2%	8	11.8%
<b>I Drugs Offences</b>	60	95.2%	3	4.8%
<b>J Public Order Offences</b>	122	85.9%	20	14.1%
<b>K All Other Offences (excluding Motoring)</b>	60	82.2%	13	17.8%
<b>L Motoring Offences</b>	646	91.2%	62	8.8%
<b>Admin Finalisations</b>	0	0.0%	12	100.0%
<b>TOTAL</b>	<b>1,416</b>	<b>88.8%</b>	<b>179</b>	<b>11.2%</b>