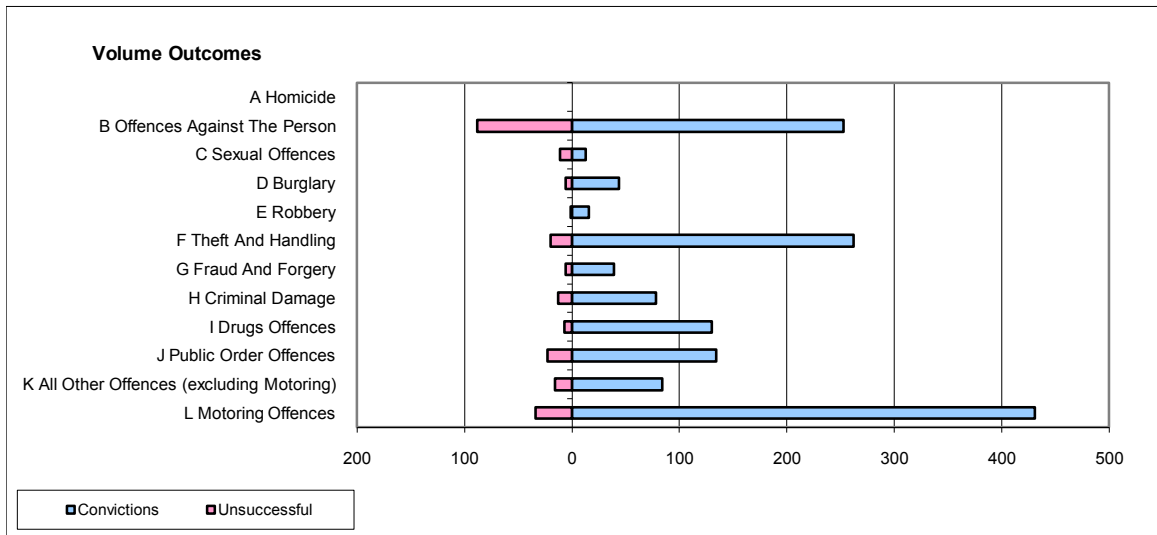
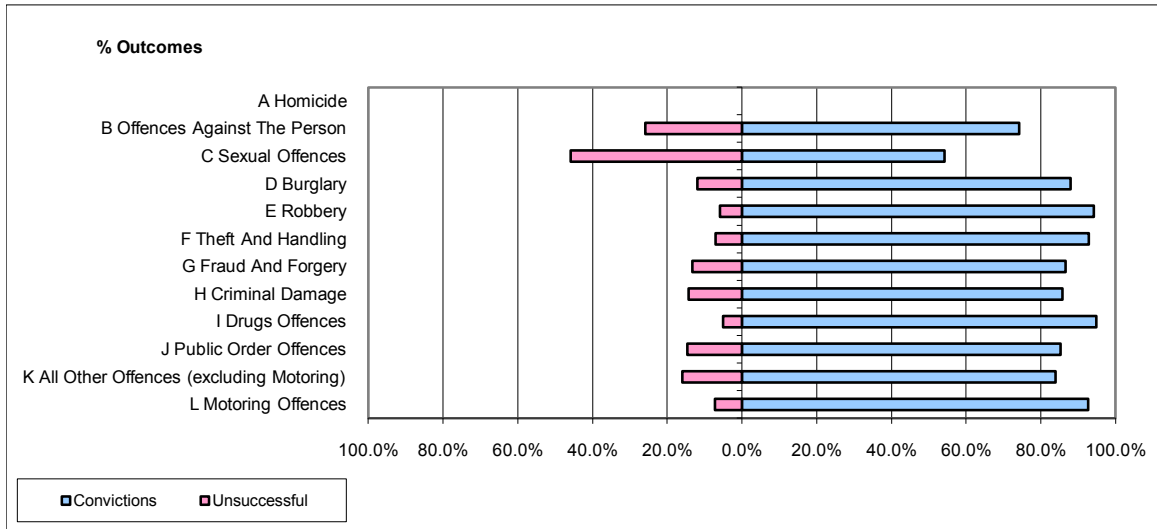


**CPS OUTCOMES BY PRINCIPAL OFFENCE CATEGORY**

**October 2009**

**P37-Sussex**



	Convictions		Unsuccessful	
	Number of Defendants	%	Number of Defendants	%
<b>A Homicide</b>	<b>0</b>	<b>0</b>	<b>0</b>	<b>0</b>
<b>B Offences Against The Person</b>	<b>253</b>	<b>74.2%</b>	<b>88</b>	<b>25.8%</b>
<b>C Sexual Offences</b>	<b>13</b>	<b>54.2%</b>	<b>11</b>	<b>45.8%</b>
<b>D Burglary</b>	<b>44</b>	<b>88.0%</b>	<b>6</b>	<b>12.0%</b>
<b>E Robbery</b>	<b>16</b>	<b>94.1%</b>	<b>1</b>	<b>5.9%</b>
<b>F Theft And Handling</b>	<b>262</b>	<b>92.9%</b>	<b>20</b>	<b>7.1%</b>
<b>G Fraud And Forgery</b>	<b>39</b>	<b>86.7%</b>	<b>6</b>	<b>13.3%</b>
<b>H Criminal Damage</b>	<b>78</b>	<b>85.7%</b>	<b>13</b>	<b>14.3%</b>
<b>I Drugs Offences</b>	<b>130</b>	<b>94.9%</b>	<b>7</b>	<b>5.1%</b>
<b>J Public Order Offences</b>	<b>134</b>	<b>85.4%</b>	<b>23</b>	<b>14.6%</b>
<b>K All Other Offences (excluding Motoring)</b>	<b>84</b>	<b>84.0%</b>	<b>16</b>	<b>16.0%</b>
<b>L Motoring Offences</b>	<b>431</b>	<b>92.7%</b>	<b>34</b>	<b>7.3%</b>
<b>Admin Finalisations</b>	<b>0</b>	<b>0.0%</b>	<b>13</b>	<b>100.0%</b>
<b>TOTAL</b>	<b>1,484</b>	<b>86.2%</b>	<b>238</b>	<b>13.8%</b>