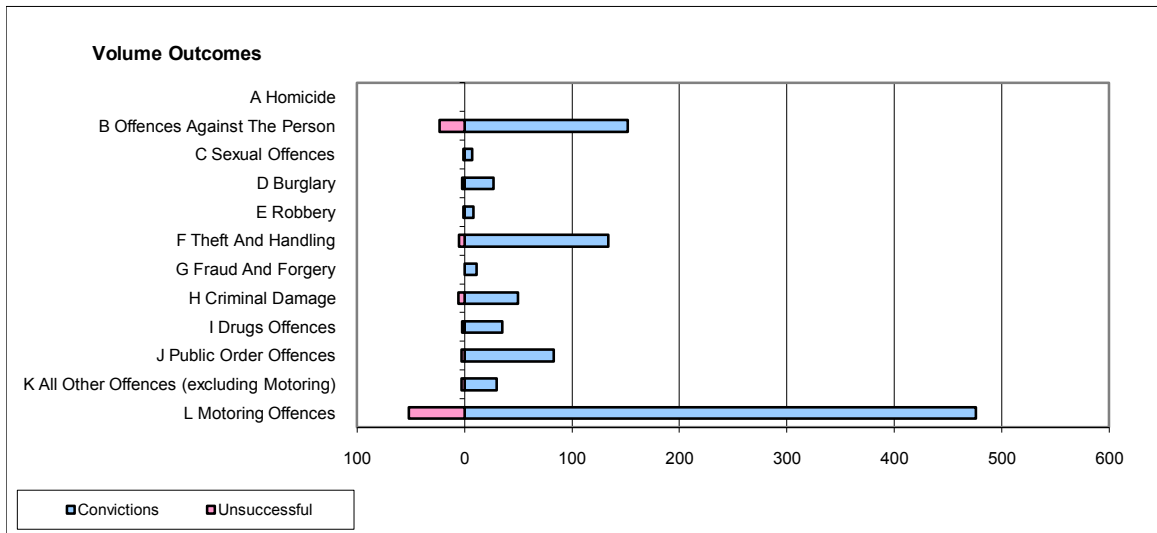
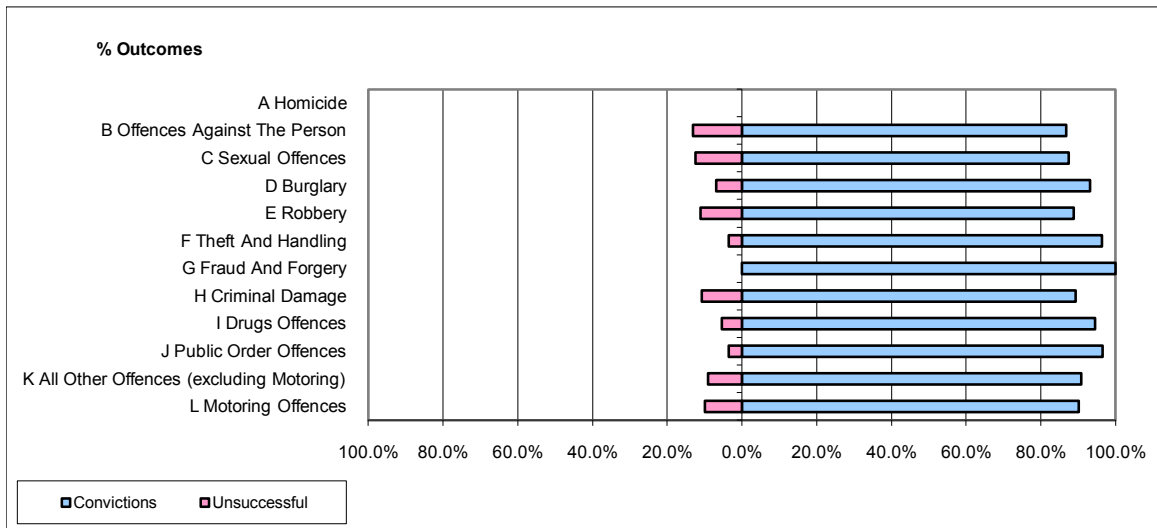


CPS OUTCOMES BY PRINCIPAL OFFENCE CATEGORY

October 2009

P35-Suffolk



	Convictions		Unsuccessful	
	Number of Defendants	%	Number of Defendants	%
A Homicide	0	0	0	0
B Offences Against The Person	152	86.9%	23	13.1%
C Sexual Offences	7	87.5%	1	12.5%
D Burglary	27	93.1%	2	6.9%
E Robbery	8	88.9%	1	11.1%
F Theft And Handling	134	96.4%	5	3.6%
G Fraud And Forgery	11	100.0%	0	0.0%
H Criminal Damage	50	89.3%	6	10.7%
I Drugs Offences	35	94.6%	2	5.4%
J Public Order Offences	83	96.5%	3	3.5%
K All Other Offences (excluding Motoring)	30	90.9%	3	9.1%
L Motoring Offences	476	90.2%	52	9.8%
Admin Finalisations	0	0.0%	18	100.0%
TOTAL	1,013	89.7%	116	10.3%