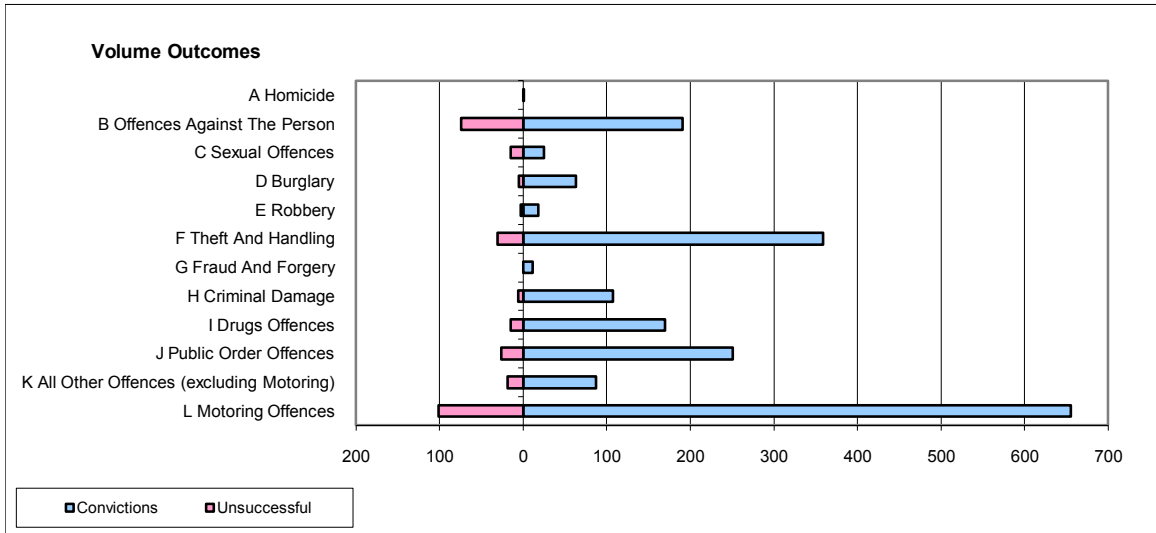
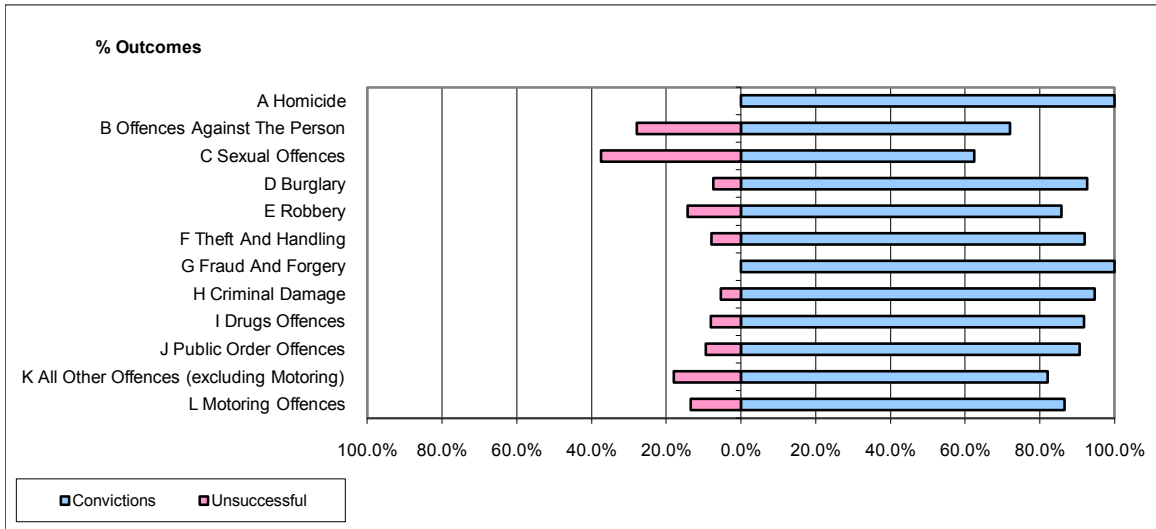


CPS OUTCOMES BY PRINCIPAL OFFENCE CATEGORY

October 2009

P32-SouthWales



	Convictions		Unsuccessful	
	Number of Defendants	%	Number of Defendants	%
A Homicide	1	100.0%	0	0.0%
B Offences Against The Person	191	72.1%	74	27.9%
C Sexual Offences	25	62.5%	15	37.5%
D Burglary	63	92.6%	5	7.4%
E Robbery	18	85.7%	3	14.3%
F Theft And Handling	359	92.1%	31	7.9%
G Fraud And Forgery	11	100.0%	0	0.0%
H Criminal Damage	107	94.7%	6	5.3%
I Drugs Offences	170	91.9%	15	8.1%
J Public Order Offences	251	90.6%	26	9.4%
K All Other Offences (excluding Motoring)	87	82.1%	19	17.9%
L Motoring Offences	655	86.6%	101	13.4%
Admin Finalisations	0	0.0%	23	100.0%
TOTAL	1,938	85.9%	318	14.1%