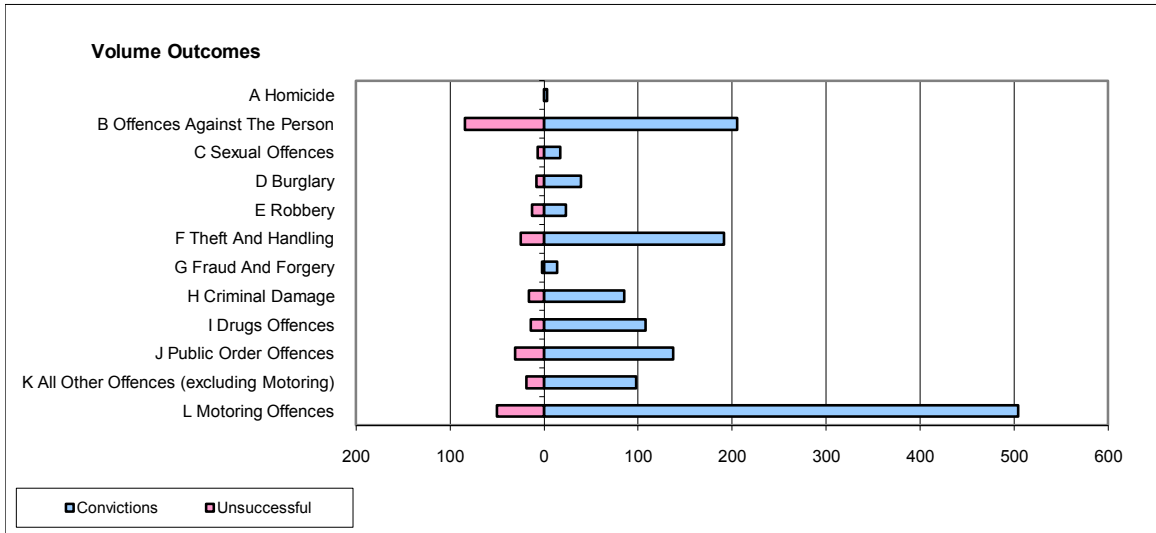
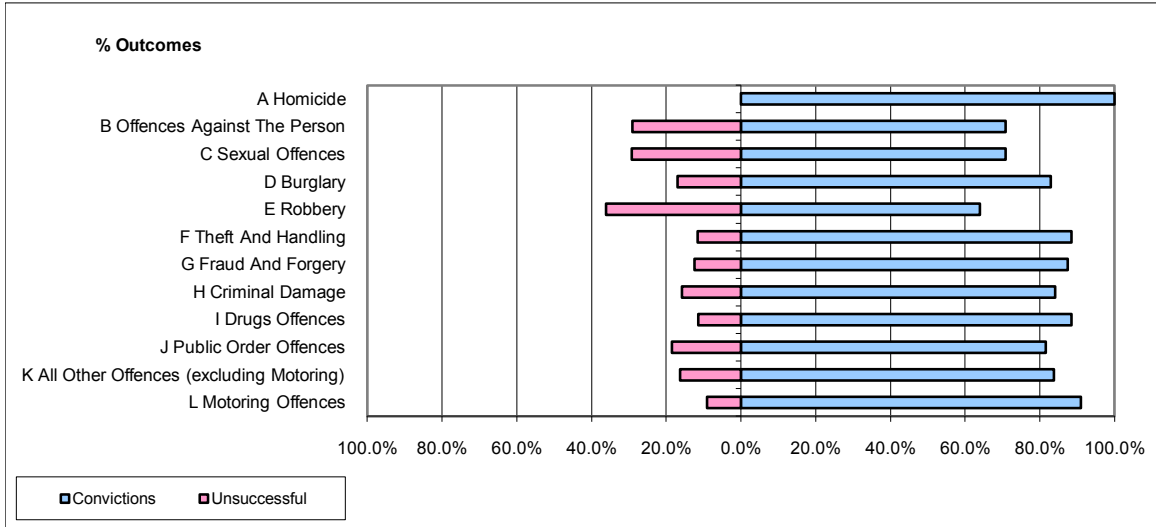


**CPS OUTCOMES BY PRINCIPAL OFFENCE CATEGORY**

**October 2009**

**P31-Nottinghamshire**



	Convictions		Unsuccessful	
	Number of Defendants	%	Number of Defendants	%
<b>A Homicide</b>	3	100.0%	0	0.0%
<b>B Offences Against The Person</b>	205	70.9%	84	29.1%
<b>C Sexual Offences</b>	17	70.8%	7	29.2%
<b>D Burglary</b>	39	83.0%	8	17.0%
<b>E Robbery</b>	23	63.9%	13	36.1%
<b>F Theft And Handling</b>	191	88.4%	25	11.6%
<b>G Fraud And Forgery</b>	14	87.5%	2	12.5%
<b>H Criminal Damage</b>	85	84.2%	16	15.8%
<b>I Drugs Offences</b>	108	88.5%	14	11.5%
<b>J Public Order Offences</b>	137	81.5%	31	18.5%
<b>K All Other Offences (excluding Motoring)</b>	98	83.8%	19	16.2%
<b>L Motoring Offences</b>	504	91.0%	50	9.0%
<b>Admin Finalisations</b>	0	0.0%	35	100.0%
<b>TOTAL</b>	<b>1,424</b>	<b>82.4%</b>	<b>304</b>	<b>17.6%</b>