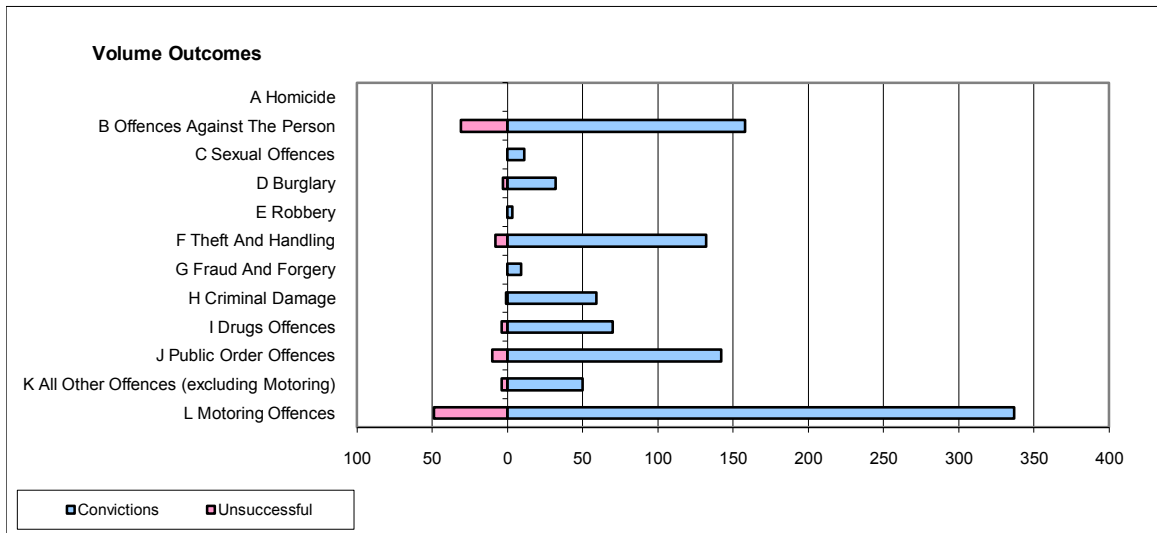
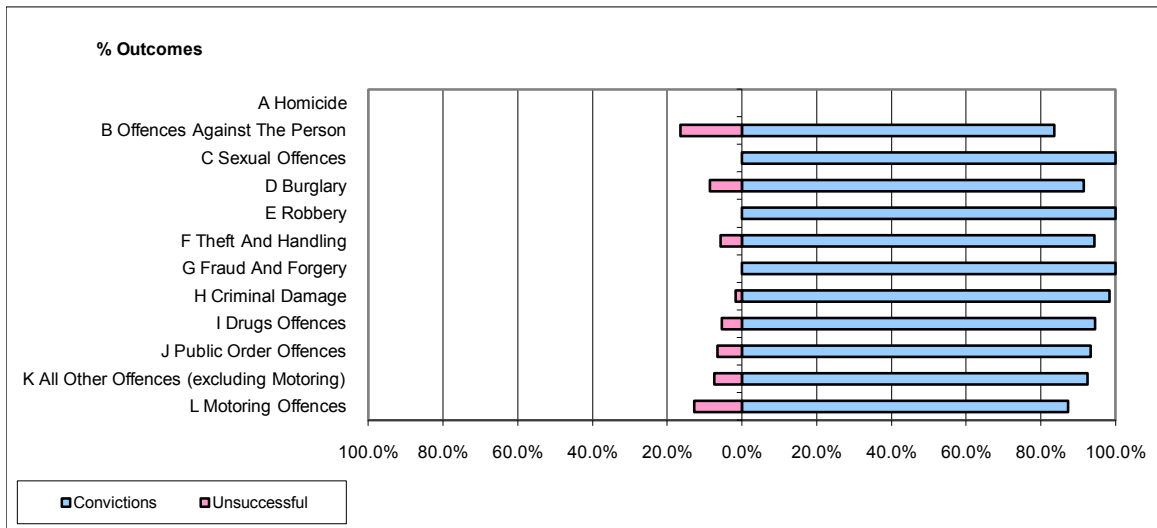


**CPS OUTCOMES BY PRINCIPAL OFFENCE CATEGORY**

**October 2009**

**P29-NorthWales**



	Convictions		Unsuccessful	
	Number of Defendants	%	Number of Defendants	%
<b>A Homicide</b>	0	0	0	0
<b>B Offences Against The Person</b>	158	83.6%	31	16.4%
<b>C Sexual Offences</b>	11	100.0%	0	0.0%
<b>D Burglary</b>	32	91.4%	3	8.6%
<b>E Robbery</b>	3	100.0%	0	0.0%
<b>F Theft And Handling</b>	132	94.3%	8	5.7%
<b>G Fraud And Forgery</b>	9	100.0%	0	0.0%
<b>H Criminal Damage</b>	59	98.3%	1	1.7%
<b>I Drugs Offences</b>	70	94.6%	4	5.4%
<b>J Public Order Offences</b>	142	93.4%	10	6.6%
<b>K All Other Offences (excluding Motoring)</b>	50	92.6%	4	7.4%
<b>L Motoring Offences</b>	337	87.3%	49	12.7%
<b>Admin Finalisations</b>	0	0.0%	6	100.0%
<b>TOTAL</b>	<b>1,003</b>	<b>89.6%</b>	<b>116</b>	<b>10.4%</b>