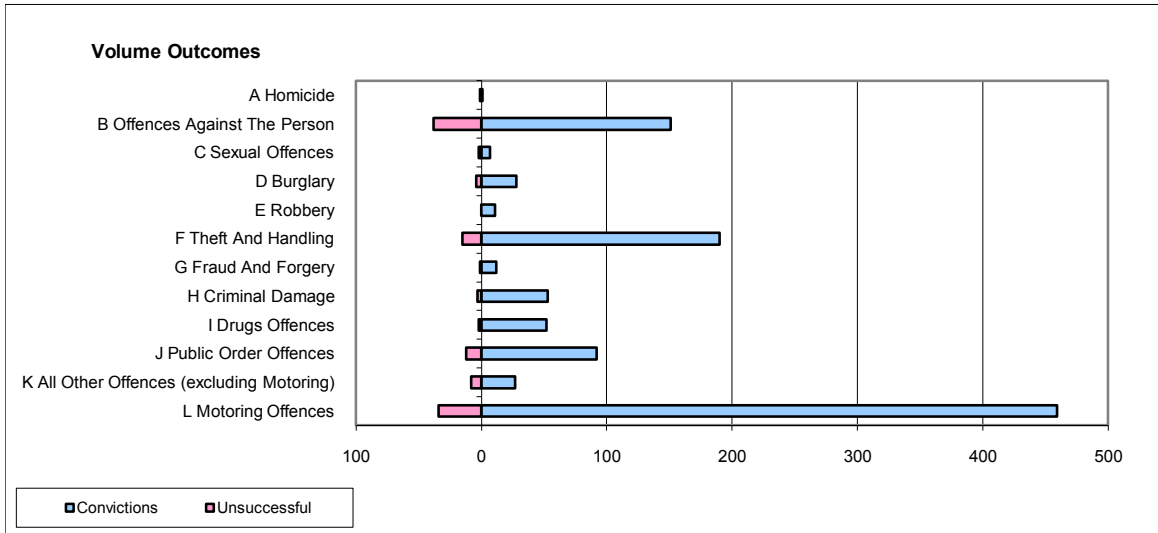
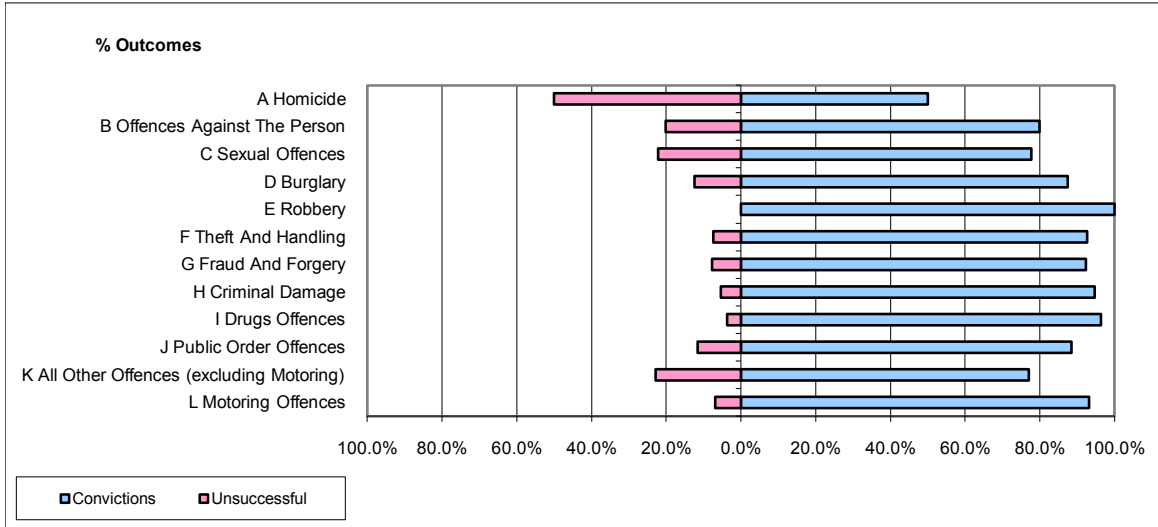


CPS OUTCOMES BY PRINCIPAL OFFENCE CATEGORY

October 2009

P26-Norfolk



	Convictions		Unsuccessful	
	Number of Defendants	%	Number of Defendants	%
A Homicide	1	50.0%	1	50.0%
B Offences Against The Person	151	79.9%	38	20.1%
C Sexual Offences	7	77.8%	2	22.2%
D Burglary	28	87.5%	4	12.5%
E Robbery	11	100.0%	0	0.0%
F Theft And Handling	190	92.7%	15	7.3%
G Fraud And Forgery	12	92.3%	1	7.7%
H Criminal Damage	53	94.6%	3	5.4%
I Drugs Offences	52	96.3%	2	3.7%
J Public Order Offences	92	88.5%	12	11.5%
K All Other Offences (excluding Motoring)	27	77.1%	8	22.9%
L Motoring Offences	459	93.1%	34	6.9%
Admin Finalisations	0	0.0%	10	100.0%
TOTAL	1,083	89.3%	130	10.7%