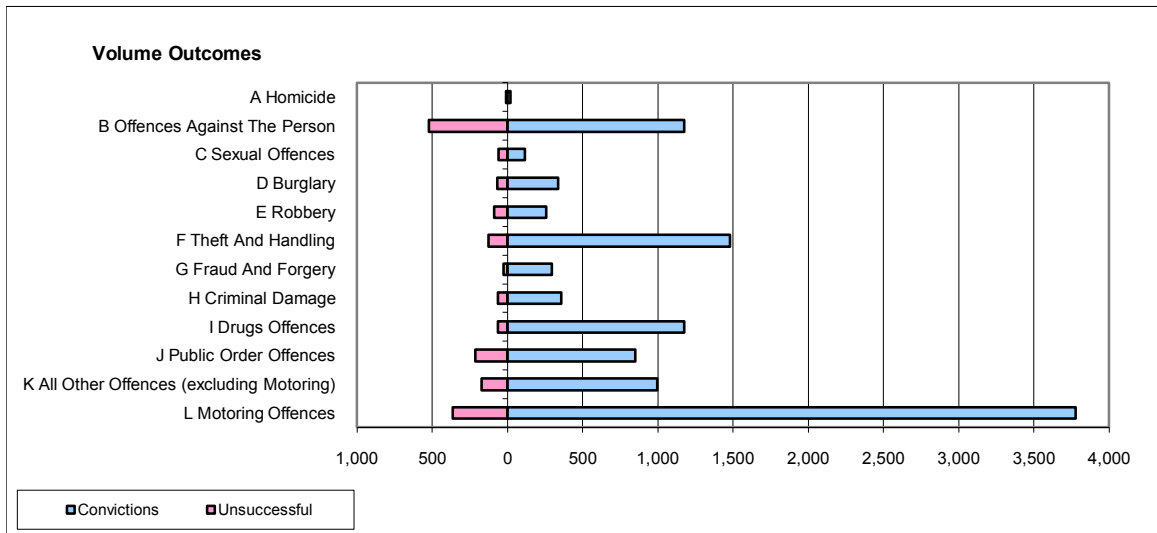
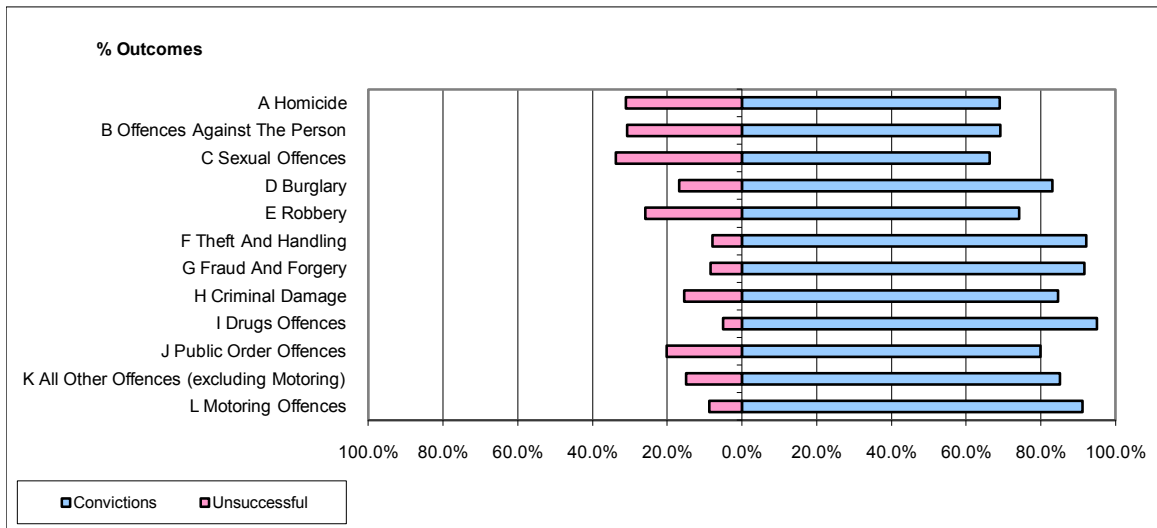


CPS OUTCOMES BY PRINCIPAL OFFENCE CATEGORY

October 2009

P25-Metropolitan&City



	Convictions		Unsuccessful	
	Number of Defendants	%	Number of Defendants	%
A Homicide	20	69.0%	9	31.0%
B Offences Against The Person	1,175	69.2%	522	30.8%
C Sexual Offences	116	66.3%	59	33.7%
D Burglary	336	83.2%	68	16.8%
E Robbery	256	74.2%	89	25.8%
F Theft And Handling	1,480	92.1%	127	7.9%
G Fraud And Forgery	296	91.6%	27	8.4%
H Criminal Damage	357	84.6%	65	15.4%
I Drugs Offences	1,173	95.0%	62	5.0%
J Public Order Offences	848	79.8%	214	20.2%
K All Other Offences (excluding Motoring)	996	85.1%	174	14.9%
L Motoring Offences	3,775	91.2%	365	8.8%
Admin Finalisations	0	0.0%	326	100.0%
TOTAL	10,828	83.7%	2,107	16.3%