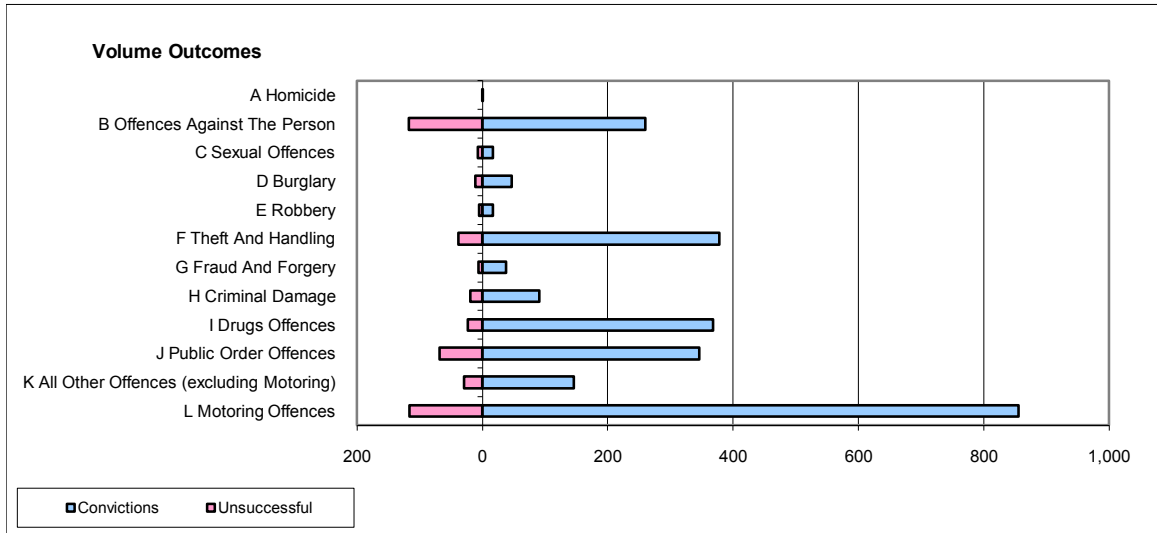
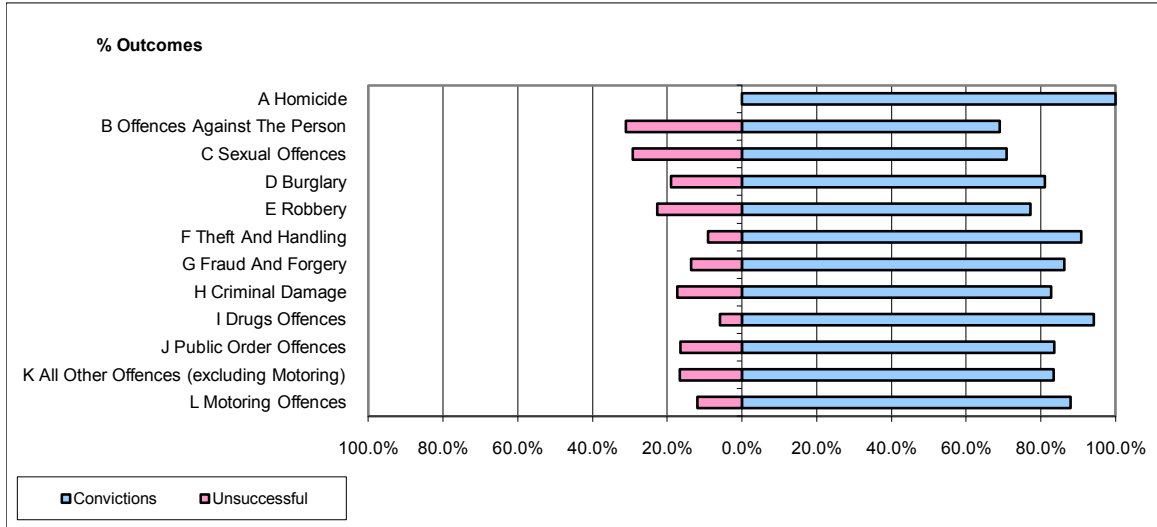


**CPS OUTCOMES BY PRINCIPAL OFFENCE CATEGORY**

**October 2009**

**P24-Merseyside**



|  | Convictions          |              | Unsuccessful         |              |
|--|----------------------|--------------|----------------------|--------------|
|  | Number of Defendants | %            | Number of Defendants | %            |
| <b>A Homicide</b>                                | 1                    | 100.0%       | 0                    | 0.0%         |
| <b>B Offences Against The Person</b>             | 260                  | 69.0%        | 117                  | 31.0%        |
| <b>C Sexual Offences</b>                         | 17                   | 70.8%        | 7                    | 29.2%        |
| <b>D Burglary</b>                                | 47                   | 81.0%        | 11                   | 19.0%        |
| <b>E Robbery</b>                                 | 17                   | 77.3%        | 5                    | 22.7%        |
| <b>F Theft And Handling</b>                      | 378                  | 90.9%        | 38                   | 9.1%         |
| <b>G Fraud And Forgery</b>                       | 38                   | 86.4%        | 6                    | 13.6%        |
| <b>H Criminal Damage</b>                         | 91                   | 82.7%        | 19                   | 17.3%        |
| <b>I Drugs Offences</b>                          | 368                  | 94.1%        | 23                   | 5.9%         |
| <b>J Public Order Offences</b>                   | 346                  | 83.6%        | 68                   | 16.4%        |
| <b>K All Other Offences (excluding Motoring)</b> | 146                  | 83.4%        | 29                   | 16.6%        |
| <b>L Motoring Offences</b>                       | 855                  | 88.1%        | 116                  | 11.9%        |
| <b>Admin Finalisations</b>                       | 0                    | 0.0%         | 24                   | 100.0%       |
| <b>TOTAL</b>                                     | <b>2,564</b>         | <b>84.7%</b> | <b>463</b>           | <b>15.3%</b> |