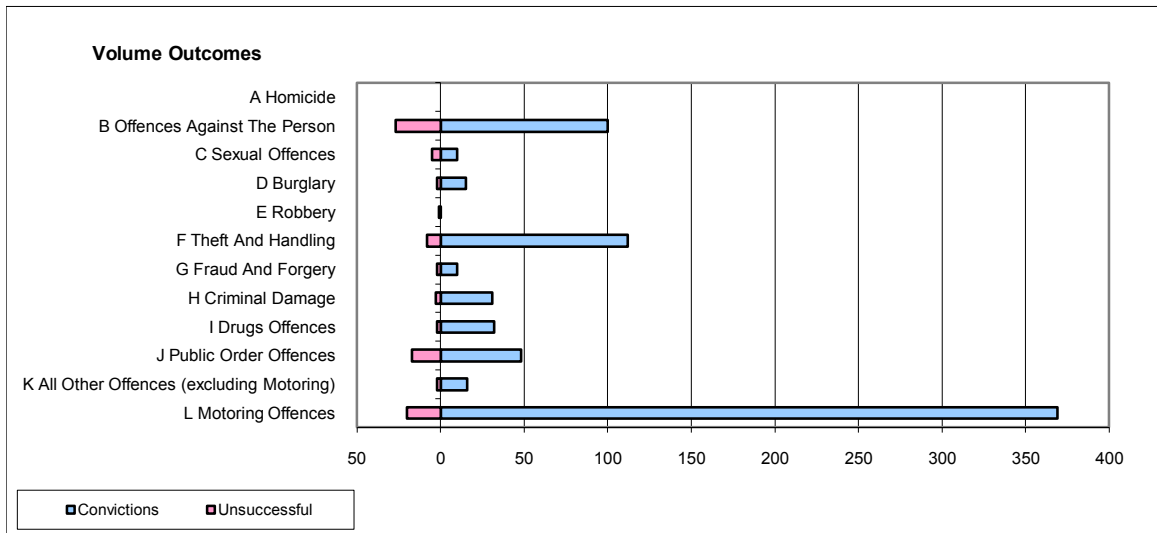
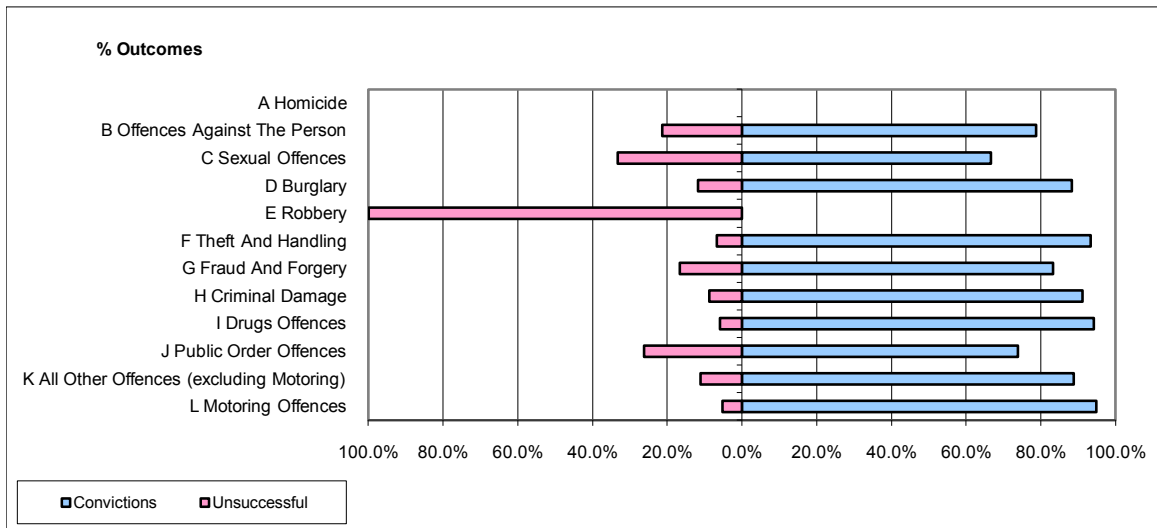


CPS OUTCOMES BY PRINCIPAL OFFENCE CATEGORY

October 2009

P23-Lincolnshire



	Convictions		Unsuccessful	
	Number of Defendants	%	Number of Defendants	%
A Homicide	0	0	0	0
B Offences Against The Person	100	78.7%	27	21.3%
C Sexual Offences	10	66.7%	5	33.3%
D Burglary	15	88.2%	2	11.8%
E Robbery	0	0.0%	1	100.0%
F Theft And Handling	112	93.3%	8	6.7%
G Fraud And Forgery	10	83.3%	2	16.7%
H Criminal Damage	31	91.2%	3	8.8%
I Drugs Offences	32	94.1%	2	5.9%
J Public Order Offences	48	73.8%	17	26.2%
K All Other Offences (excluding Motoring)	16	88.9%	2	11.1%
L Motoring Offences	369	94.9%	20	5.1%
Admin Finalisations	0	0.0%	8	100.0%
TOTAL	743	88.5%	97	11.5%