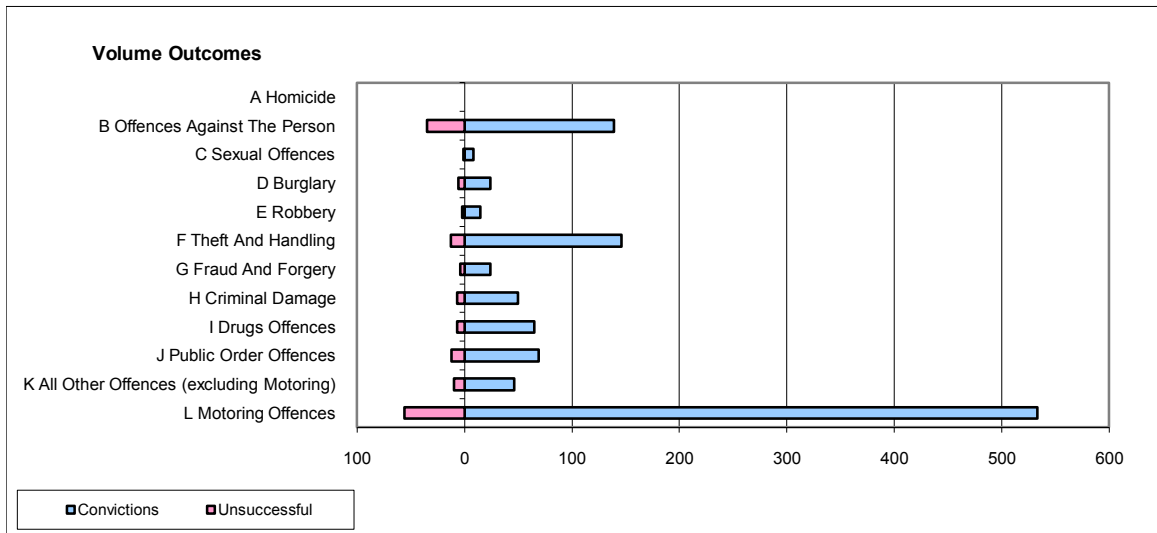
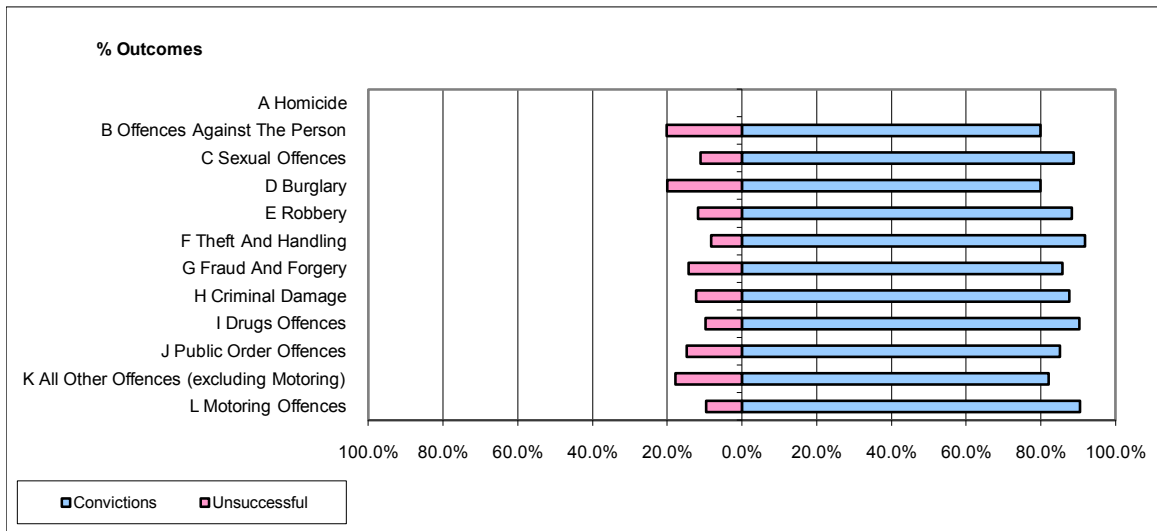


CPS OUTCOMES BY PRINCIPAL OFFENCE CATEGORY

October 2009

P22-Leicestershire



	Convictions		Unsuccessful	
	Number of Defendants	%	Number of Defendants	%
A Homicide	0	0	0	0
B Offences Against The Person	139	79.9%	35	20.1%
C Sexual Offences	8	88.9%	1	11.1%
D Burglary	24	80.0%	6	20.0%
E Robbery	15	88.2%	2	11.8%
F Theft And Handling	146	91.8%	13	8.2%
G Fraud And Forgery	24	85.7%	4	14.3%
H Criminal Damage	50	87.7%	7	12.3%
I Drugs Offences	65	90.3%	7	9.7%
J Public Order Offences	69	85.2%	12	14.8%
K All Other Offences (excluding Motoring)	46	82.1%	10	17.9%
L Motoring Offences	533	90.5%	56	9.5%
Admin Finalisations	0	0.0%	36	100.0%
TOTAL	1,119	85.6%	189	14.4%