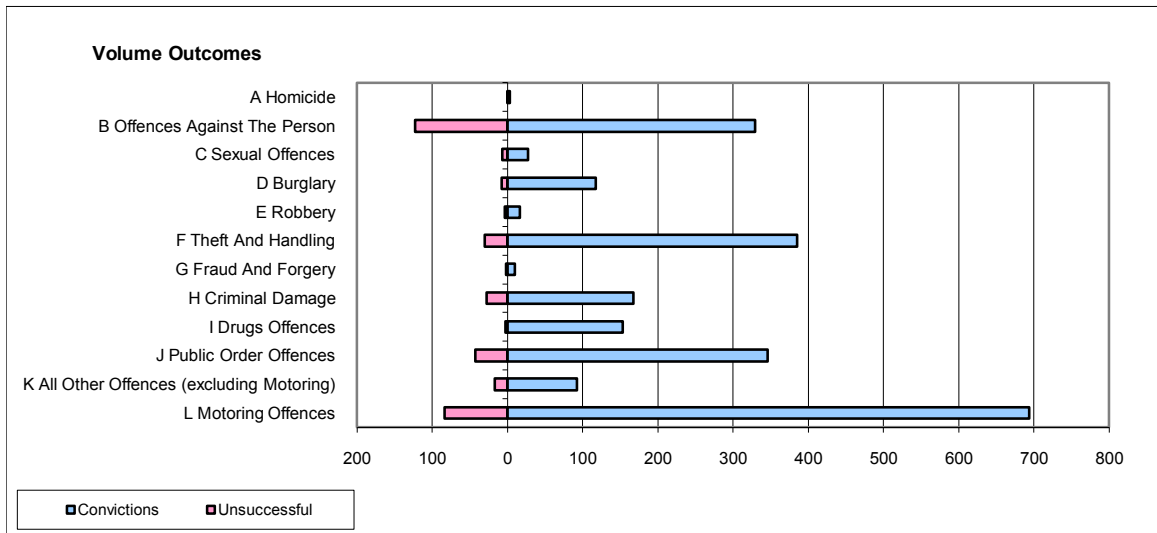
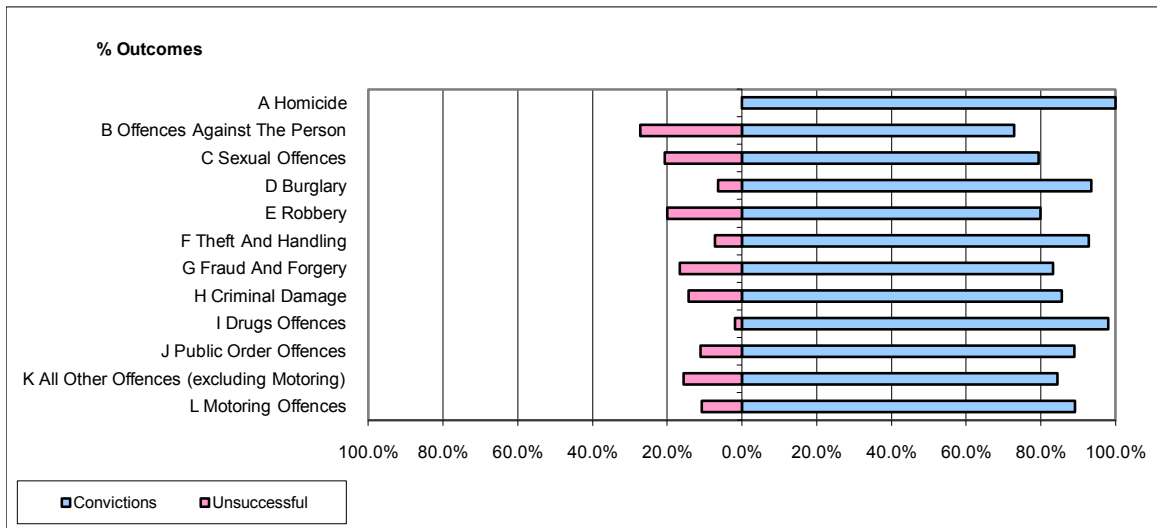


CPS OUTCOMES BY PRINCIPAL OFFENCE CATEGORY

October 2009

P21-Lancashire



	Convictions		Unsuccessful	
	Number of Defendants	%	Number of Defendants	%
A Homicide	3	100.0%	0	0.0%
B Offences Against The Person	329	72.8%	123	27.2%
C Sexual Offences	27	79.4%	7	20.6%
D Burglary	117	93.6%	8	6.4%
E Robbery	16	80.0%	4	20.0%
F Theft And Handling	385	92.8%	30	7.2%
G Fraud And Forgery	10	83.3%	2	16.7%
H Criminal Damage	167	85.6%	28	14.4%
I Drugs Offences	153	98.1%	3	1.9%
J Public Order Offences	346	88.9%	43	11.1%
K All Other Offences (excluding Motoring)	92	84.4%	17	15.6%
L Motoring Offences	694	89.2%	84	10.8%
Admin Finalisations	0	0.0%	28	100.0%
TOTAL	2,339	86.1%	377	13.9%