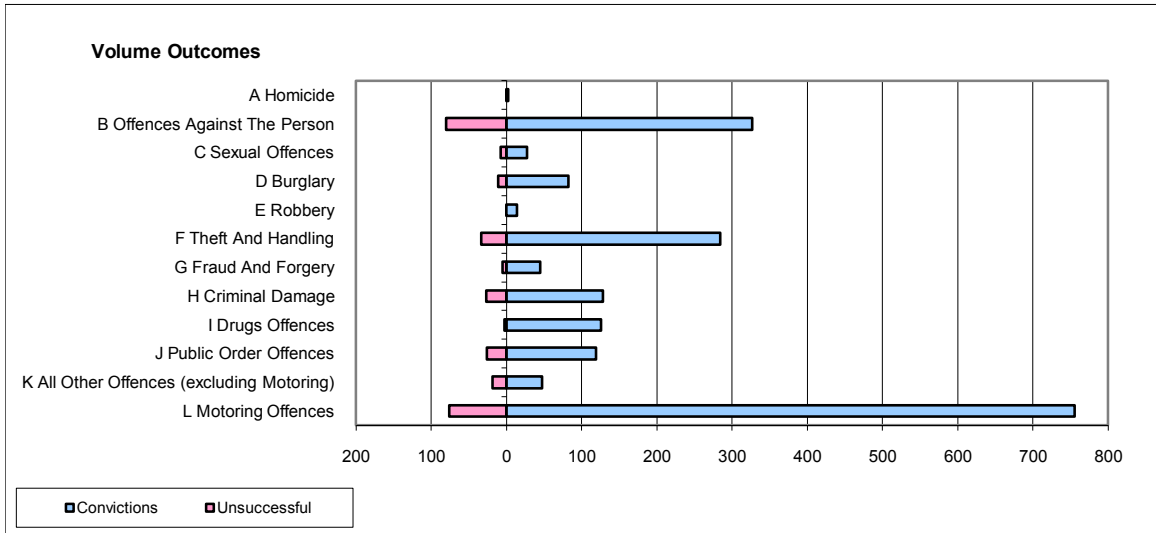
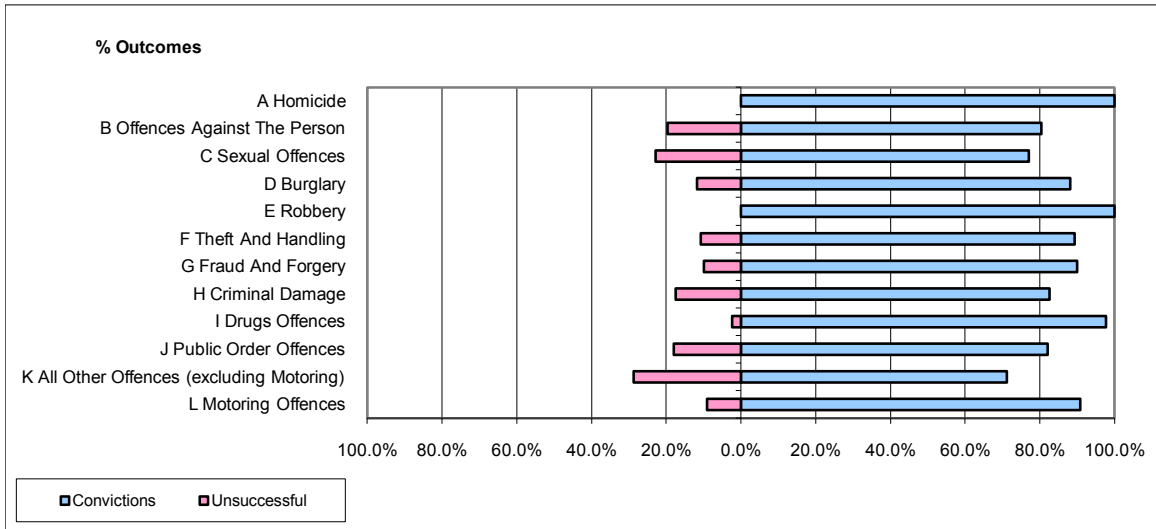


CPS OUTCOMES BY PRINCIPAL OFFENCE CATEGORY

October 2009

P20-Kent



	Convictions		Unsuccessful	
	Number of Defendants	%	Number of Defendants	%
A Homicide	2	100.0%	0	0.0%
B Offences Against The Person	327	80.3%	80	19.7%
C Sexual Offences	27	77.1%	8	22.9%
D Burglary	82	88.2%	11	11.8%
E Robbery	14	100.0%	0	0.0%
F Theft And Handling	284	89.3%	34	10.7%
G Fraud And Forgery	45	90.0%	5	10.0%
H Criminal Damage	128	82.6%	27	17.4%
I Drugs Offences	126	97.7%	3	2.3%
J Public Order Offences	119	82.1%	26	17.9%
K All Other Offences (excluding Motoring)	47	71.2%	19	28.8%
L Motoring Offences	755	90.9%	76	9.1%
Admin Finalisations	0	0.0%	57	100.0%
TOTAL	1,956	85.0%	346	15.0%