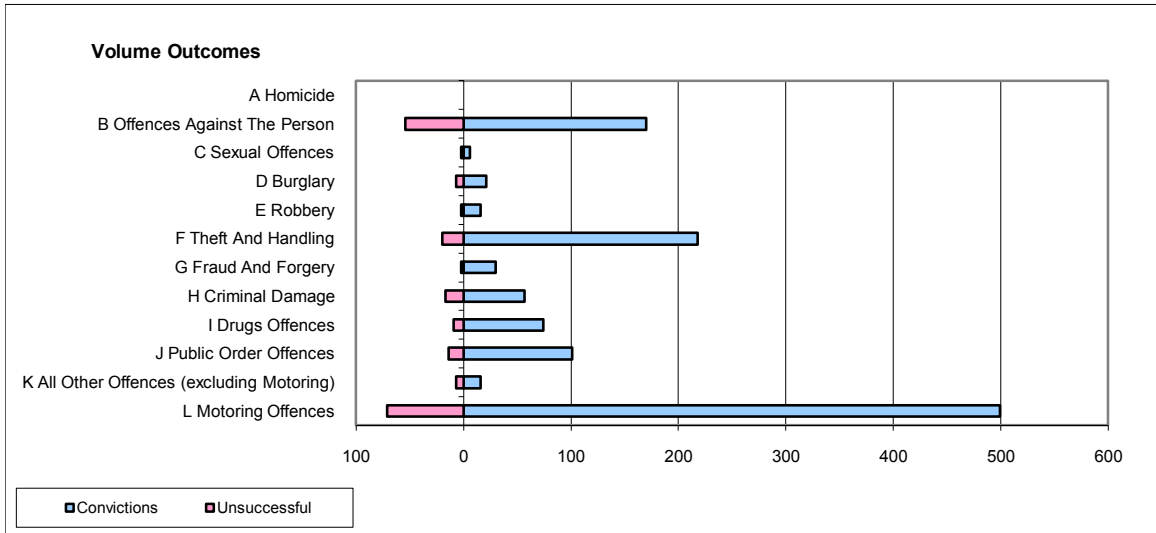
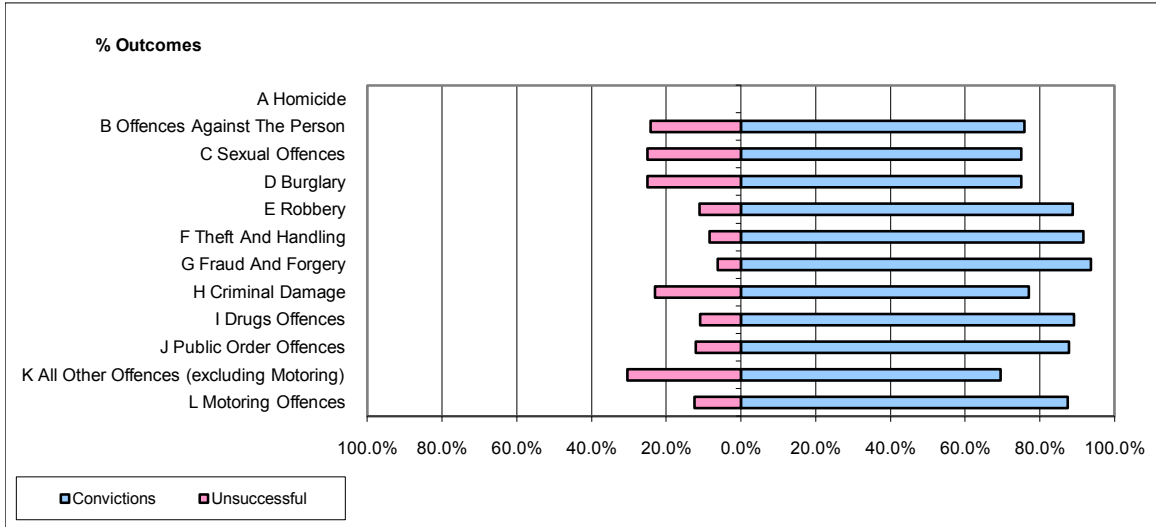


CPS OUTCOMES BY PRINCIPAL OFFENCE CATEGORY

October 2009

P18-Hertfordshire



| | Convictions | | Unsuccessful | |
|--|----------------------|--------------|----------------------|--------------|
| | Number of Defendants | % | Number of Defendants | % |
| A Homicide | 0 | 0 | 0 | 0 |
| B Offences Against The Person | 170 | 75.9% | 54 | 24.1% |
| C Sexual Offences | 6 | 75.0% | 2 | 25.0% |
| D Burglary | 21 | 75.0% | 7 | 25.0% |
| E Robbery | 16 | 88.9% | 2 | 11.1% |
| F Theft And Handling | 218 | 91.6% | 20 | 8.4% |
| G Fraud And Forgery | 30 | 93.8% | 2 | 6.3% |
| H Criminal Damage | 57 | 77.0% | 17 | 23.0% |
| I Drugs Offences | 74 | 89.2% | 9 | 10.8% |
| J Public Order Offences | 101 | 87.8% | 14 | 12.2% |
| K All Other Offences (excluding Motoring) | 16 | 69.6% | 7 | 30.4% |
| L Motoring Offences | 499 | 87.5% | 71 | 12.5% |
| Admin Finalisations | 0 | 0.0% | 18 | 100.0% |
| TOTAL | 1,208 | 84.4% | 223 | 15.6% |