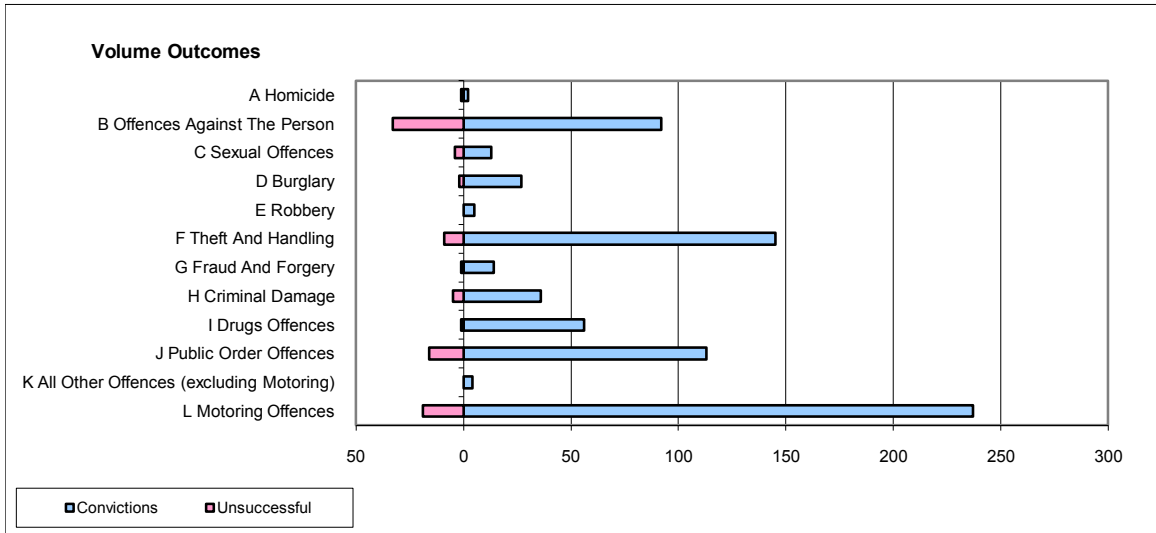
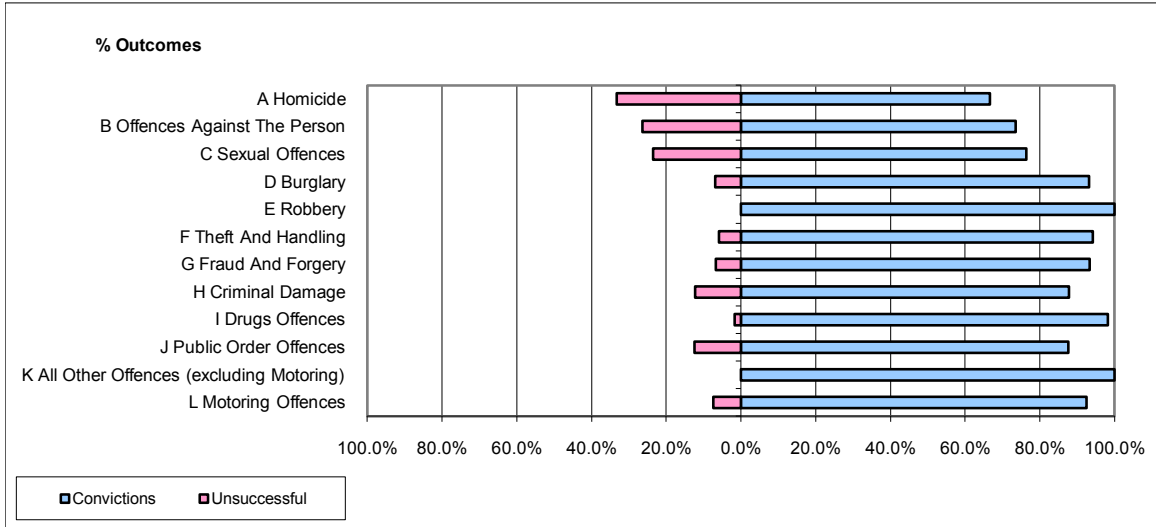


CPS OUTCOMES BY PRINCIPAL OFFENCE CATEGORY

October 2009

P16-Gwent



	Convictions		Unsuccessful	
	Number of Defendants	%	Number of Defendants	%
A Homicide	2	66.7%	1	33.3%
B Offences Against The Person	92	73.6%	33	26.4%
C Sexual Offences	13	76.5%	4	23.5%
D Burglary	27	93.1%	2	6.9%
E Robbery	5	100.0%	0	0.0%
F Theft And Handling	145	94.2%	9	5.8%
G Fraud And Forgery	14	93.3%	1	6.7%
H Criminal Damage	36	87.8%	5	12.2%
I Drugs Offences	56	98.2%	1	1.8%
J Public Order Offences	113	87.6%	16	12.4%
K All Other Offences (excluding Motoring)	4	100.0%	0	0.0%
L Motoring Offences	237	92.6%	19	7.4%
Admin Finalisations	0	0.0%	7	100.0%
TOTAL	744	88.4%	98	11.6%