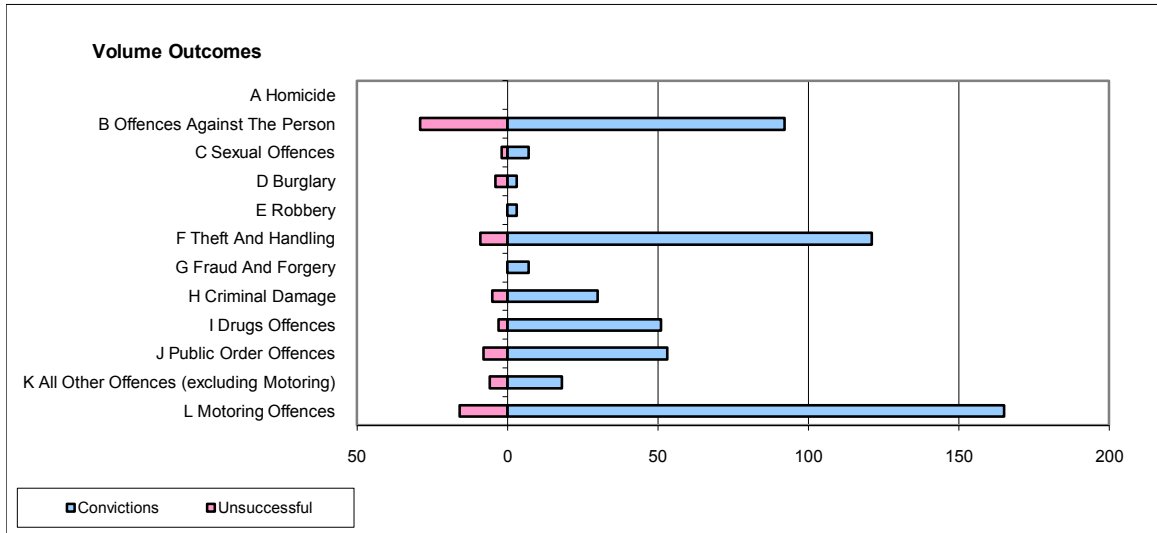
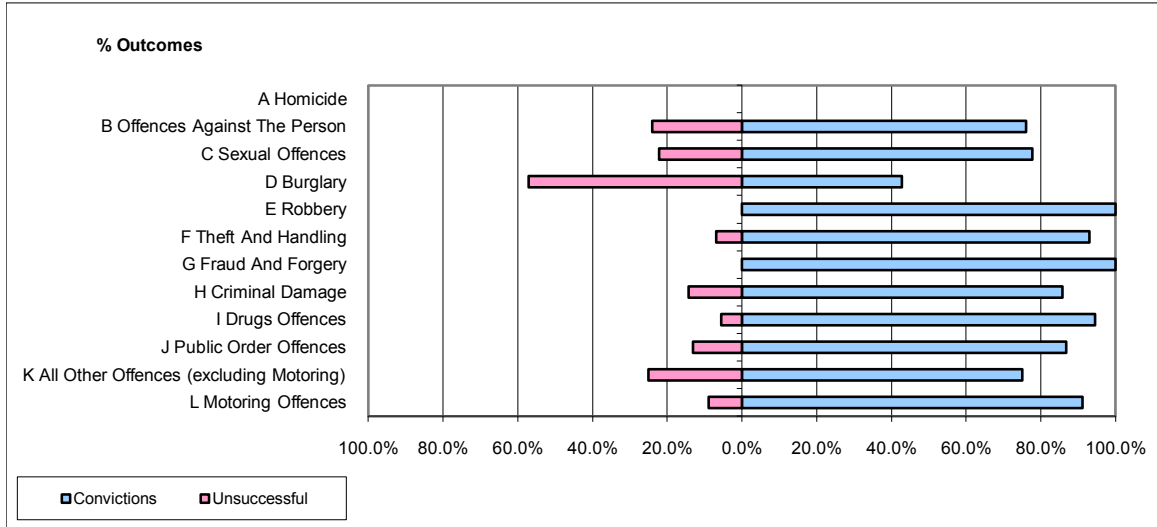


CPS OUTCOMES BY PRINCIPAL OFFENCE CATEGORY

October 2009

P14-Gloucestershire



	Convictions		Unsuccessful	
	Number of Defendants	%	Number of Defendants	%
A Homicide	0	0	0	0
B Offences Against The Person	92	76.0%	29	24.0%
C Sexual Offences	7	77.8%	2	22.2%
D Burglary	3	42.9%	4	57.1%
E Robbery	3	100.0%	0	0.0%
F Theft And Handling	121	93.1%	9	6.9%
G Fraud And Forgery	7	100.0%	0	0.0%
H Criminal Damage	30	85.7%	5	14.3%
I Drugs Offences	51	94.4%	3	5.6%
J Public Order Offences	53	86.9%	8	13.1%
K All Other Offences (excluding Motoring)	18	75.0%	6	25.0%
L Motoring Offences	165	91.2%	16	8.8%
Admin Finalisations	0	0.0%	6	100.0%
TOTAL	550	86.2%	88	13.8%