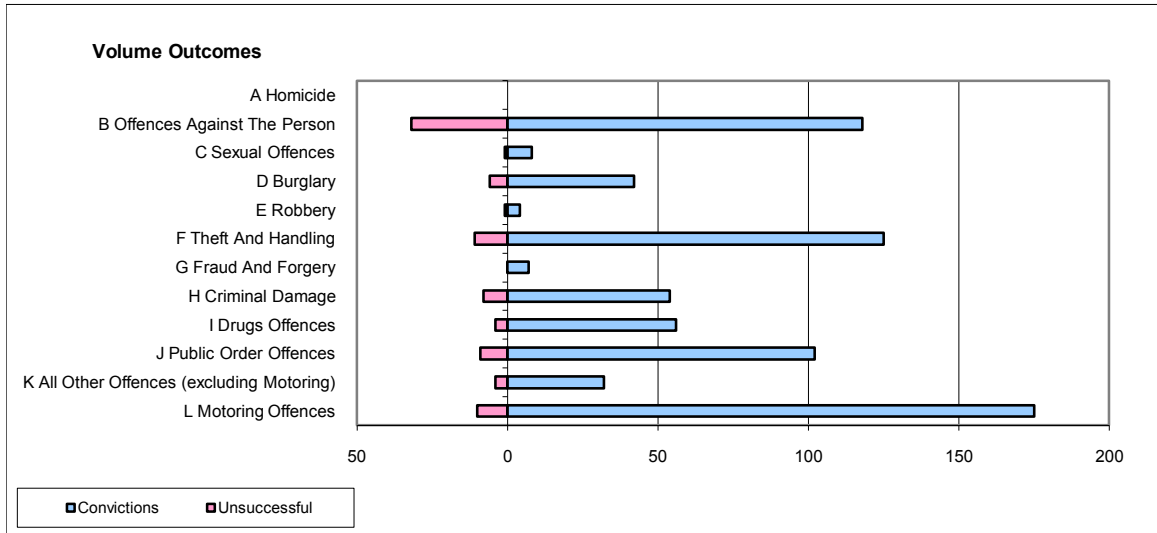
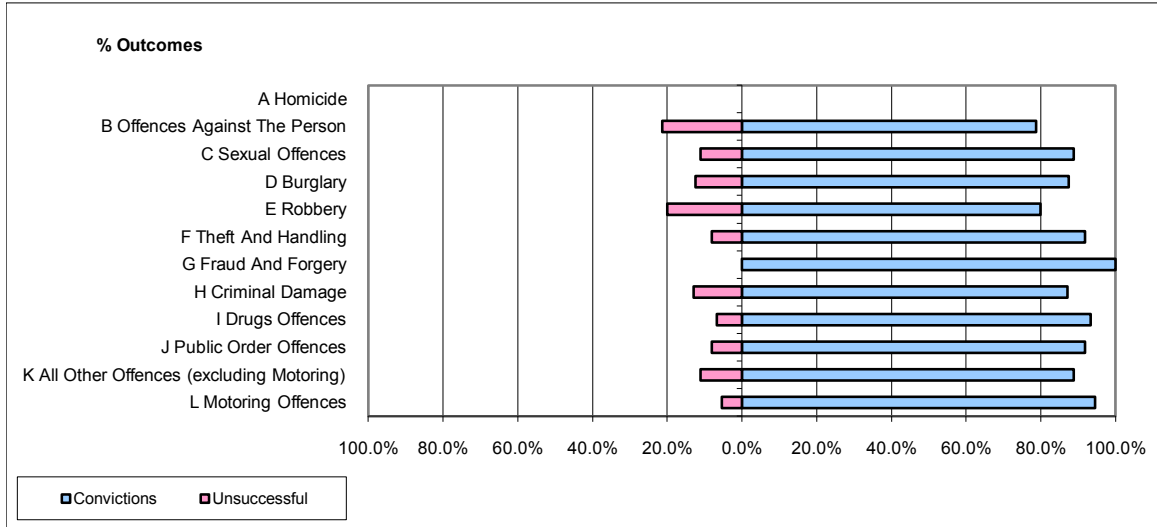


**CPS OUTCOMES BY PRINCIPAL OFFENCE CATEGORY**

**October 2009**

**P11-Durham**



	Convictions		Unsuccessful	
	Number of Defendants	%	Number of Defendants	%
<b>A Homicide</b>	0	0	0	0
<b>B Offences Against The Person</b>	118	78.7%	32	21.3%
<b>C Sexual Offences</b>	8	88.9%	1	11.1%
<b>D Burglary</b>	42	87.5%	6	12.5%
<b>E Robbery</b>	4	80.0%	1	20.0%
<b>F Theft And Handling</b>	125	91.9%	11	8.1%
<b>G Fraud And Forgery</b>	7	100.0%	0	0.0%
<b>H Criminal Damage</b>	54	87.1%	8	12.9%
<b>I Drugs Offences</b>	56	93.3%	4	6.7%
<b>J Public Order Offences</b>	102	91.9%	9	8.1%
<b>K All Other Offences (excluding Motoring)</b>	32	88.9%	4	11.1%
<b>L Motoring Offences</b>	175	94.6%	10	5.4%
<b>Admin Finalisations</b>	0	0.0%	1	100.0%
<b>TOTAL</b>	<b>723</b>	<b>89.3%</b>	<b>87</b>	<b>10.7%</b>