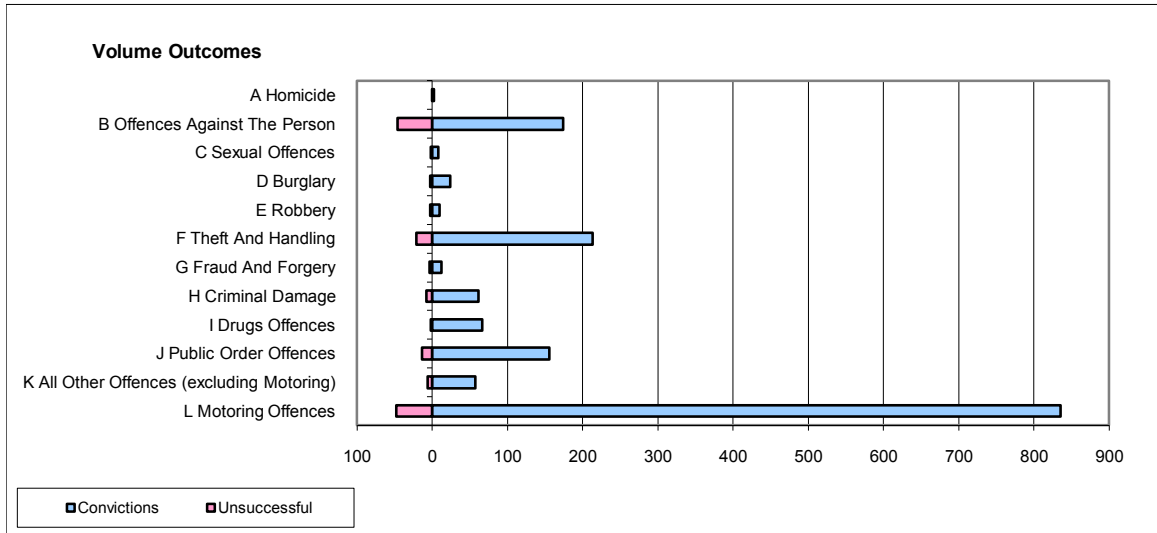
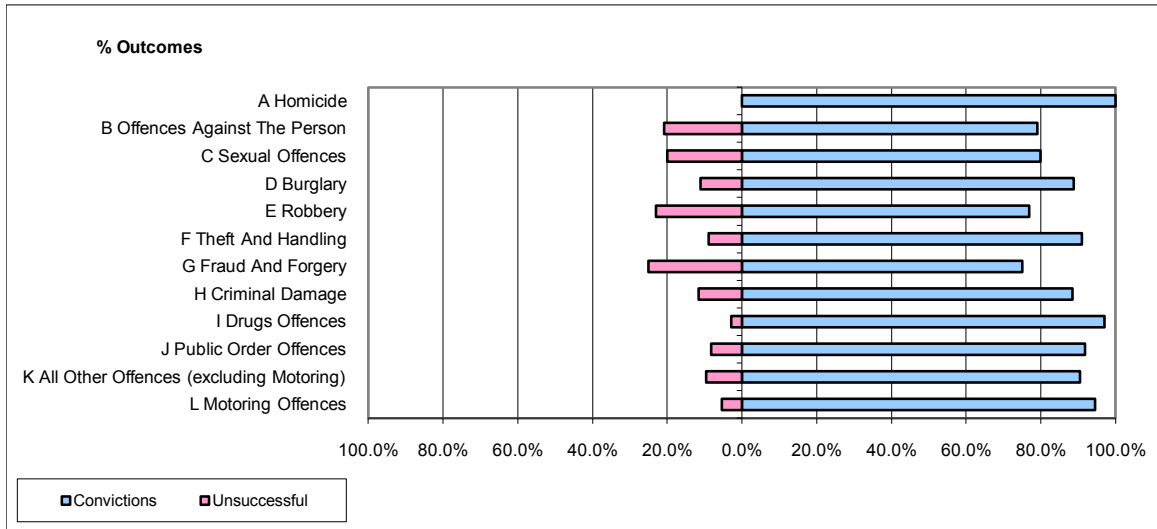


CPS OUTCOMES BY PRINCIPAL OFFENCE CATEGORY

October 2009

P04-Cheshire



	Convictions		Unsuccessful	
	Number of Defendants	%	Number of Defendants	%
A Homicide	2	100.0%	0	0.0%
B Offences Against The Person	174	79.1%	46	20.9%
C Sexual Offences	8	80.0%	2	20.0%
D Burglary	24	88.9%	3	11.1%
E Robbery	10	76.9%	3	23.1%
F Theft And Handling	213	91.0%	21	9.0%
G Fraud And Forgery	12	75.0%	4	25.0%
H Criminal Damage	61	88.4%	8	11.6%
I Drugs Offences	66	97.1%	2	2.9%
J Public Order Offences	156	91.8%	14	8.2%
K All Other Offences (excluding Motoring)	57	90.5%	6	9.5%
L Motoring Offences	835	94.6%	48	5.4%
Admin Finalisations	0	0.0%	9	100.0%
TOTAL	1,618	90.7%	166	9.3%