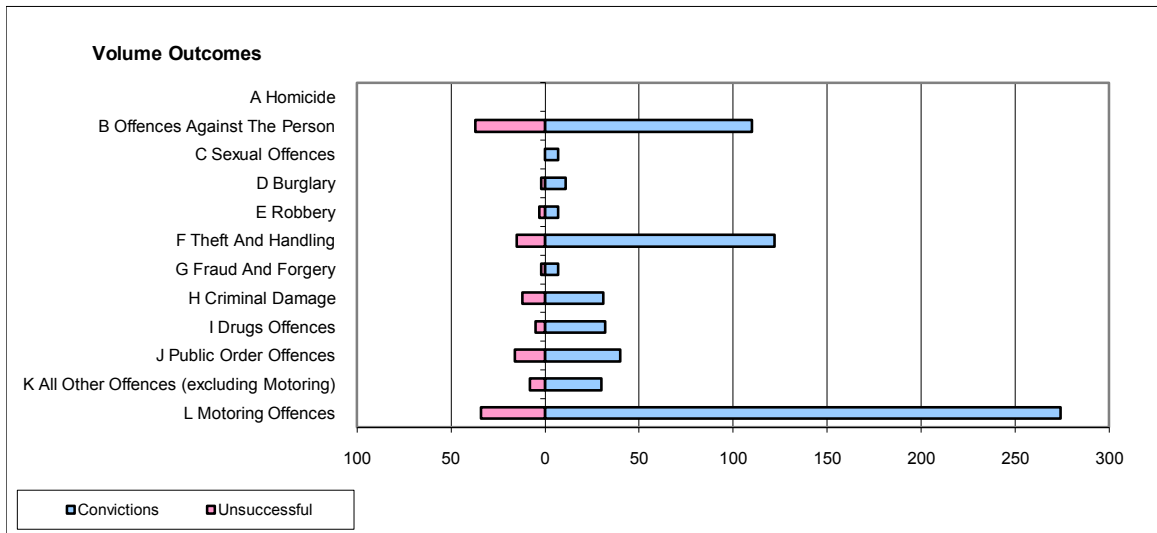
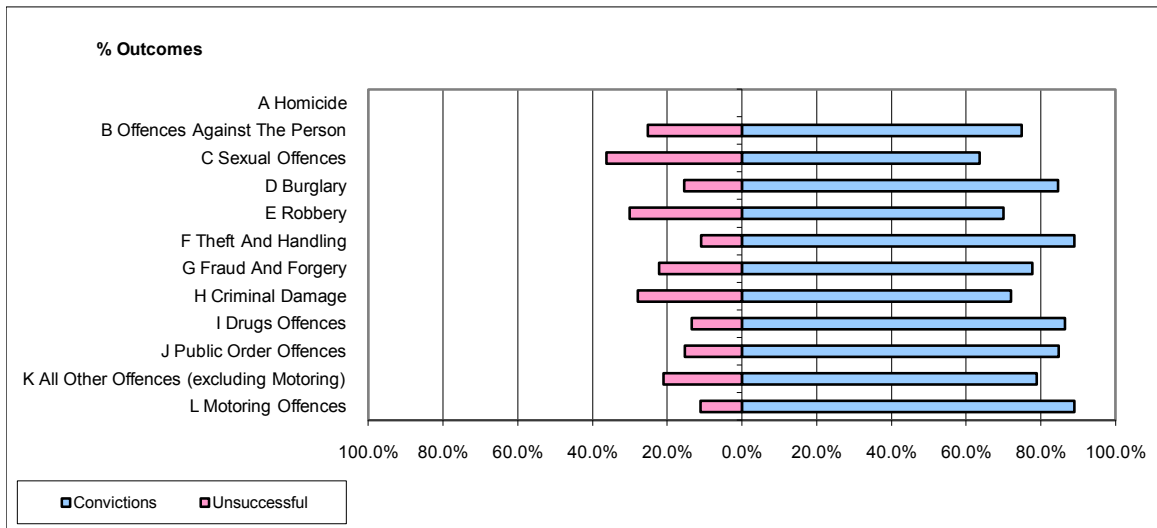


CPS OUTCOMES BY PRINCIPAL OFFENCE CATEGORY

October 2009

P02-Bedfordshire



	Convictions		Unsuccessful	
	Number of Defendants	%	Number of Defendants	%
A Homicide	0	0	0	0
B Offences Against The Person	110	74.8%	37	25.2%
C Sexual Offences	7	63.6%	0	36.4%
D Burglary	11	84.6%	2	15.4%
E Robbery	7	70.0%	3	30.0%
F Theft And Handling	122	89.1%	15	10.9%
G Fraud And Forgery	7	77.8%	2	22.2%
H Criminal Damage	31	72.1%	12	27.9%
I Drugs Offences	32	86.5%	5	13.5%
J Public Order Offences	40	84.8%	16	15.2%
K All Other Offences (excluding Motoring)	30	78.9%	8	21.1%
L Motoring Offences	274	89.0%	34	11.0%
Admin Finalisations	0	0.0%	8	100.0%
TOTAL	671	82.5%	142	17.5%