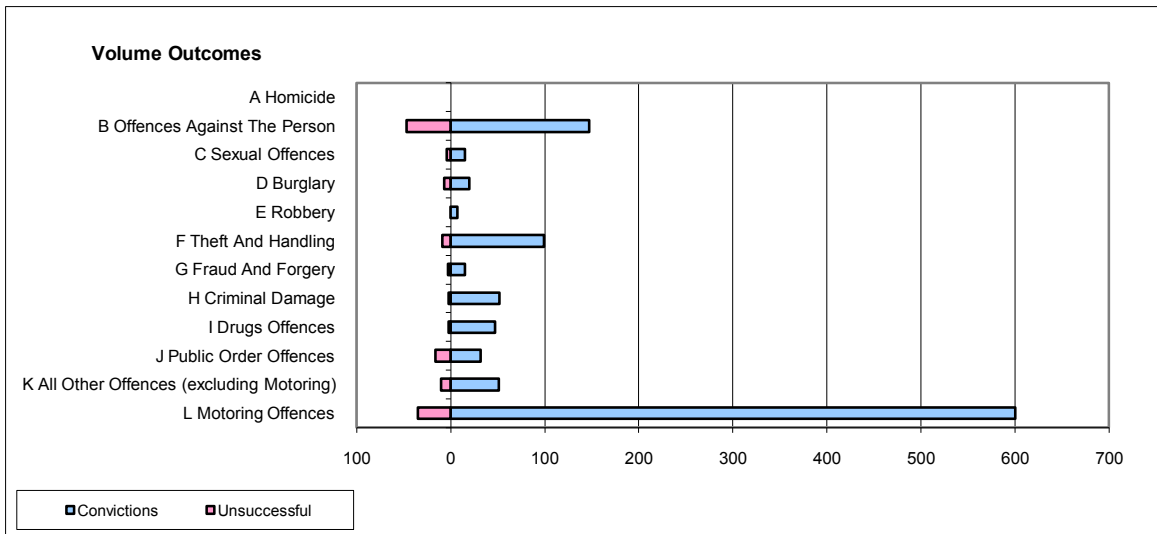
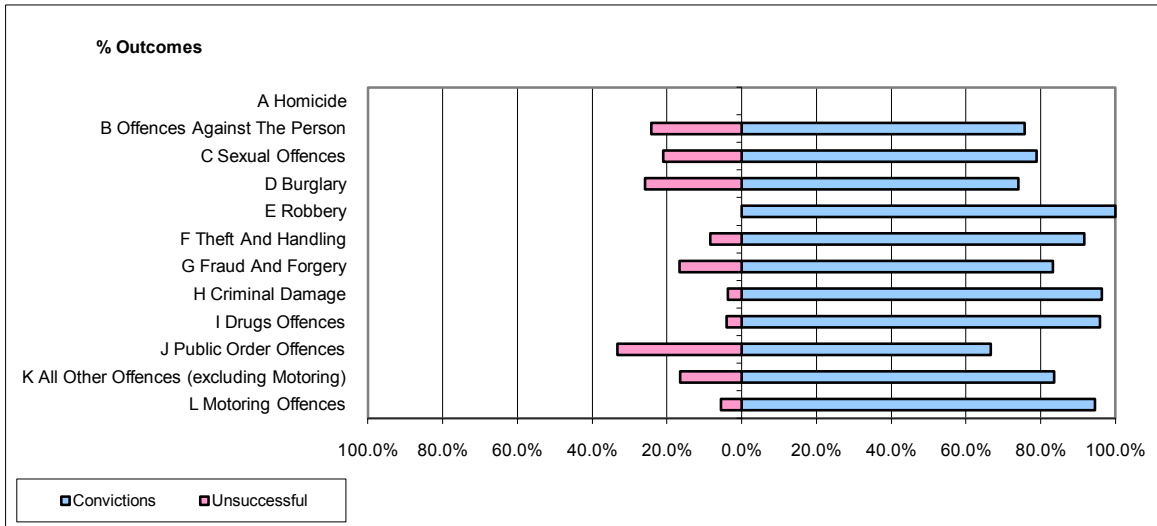


CPS OUTCOMES BY PRINCIPAL OFFENCE CATEGORY

September 2009

P43-Wiltshire



	Convictions		Unsuccessful	
	Number of Defendants	%	Number of Defendants	%
A Homicide	0	0	0	0
B Offences Against The Person	147	75.8%	47	24.2%
C Sexual Offences	15	78.9%	4	21.1%
D Burglary	20	74.1%	7	25.9%
E Robbery	7	100.0%	0	0.0%
F Theft And Handling	99	91.7%	9	8.3%
G Fraud And Forgery	15	83.3%	3	16.7%
H Criminal Damage	52	96.3%	2	3.7%
I Drugs Offences	47	95.9%	2	4.1%
J Public Order Offences	32	66.7%	16	33.3%
K All Other Offences (excluding Motoring)	51	83.6%	10	16.4%
L Motoring Offences	600	94.5%	35	5.5%
Admin Finalisations	0	0.0%	6	100.0%
TOTAL	1,085	88.5%	141	11.5%