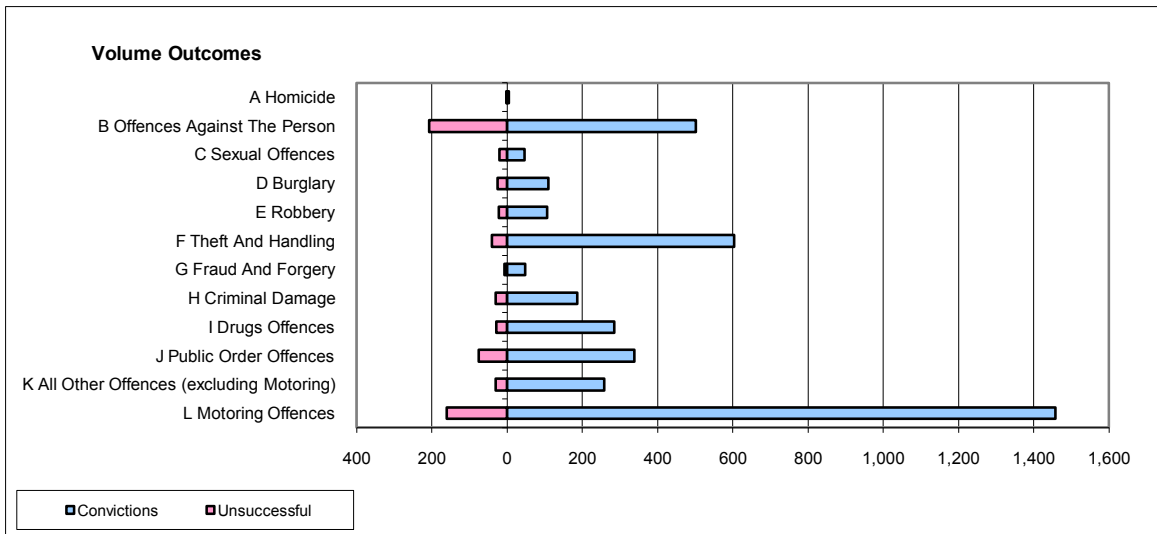
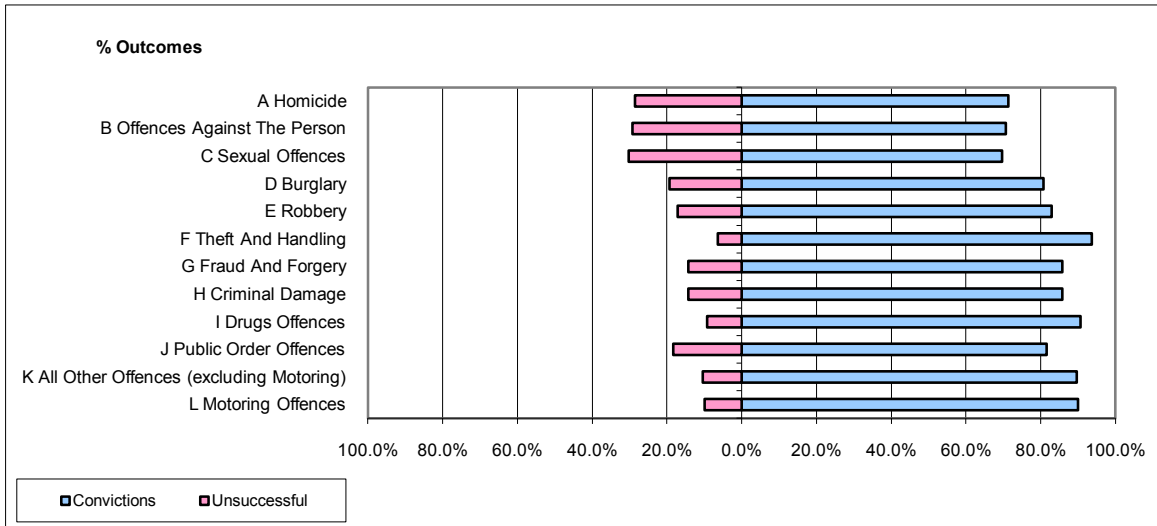


**CPS OUTCOMES BY PRINCIPAL OFFENCE CATEGORY**

**September 2009**

**P41-WestMidlands**



	Convictions		Unsuccessful	
	Number of Defendants	%	Number of Defendants	%
<b>A Homicide</b>	5	71.4%	2	28.6%
<b>B Offences Against The Person</b>	501	70.8%	207	29.2%
<b>C Sexual Offences</b>	46	69.7%	20	30.3%
<b>D Burglary</b>	109	80.7%	26	19.3%
<b>E Robbery</b>	107	82.9%	22	17.1%
<b>F Theft And Handling</b>	603	93.6%	41	6.4%
<b>G Fraud And Forgery</b>	48	85.7%	8	14.3%
<b>H Criminal Damage</b>	187	85.8%	31	14.2%
<b>I Drugs Offences</b>	284	90.7%	29	9.3%
<b>J Public Order Offences</b>	338	81.6%	76	18.4%
<b>K All Other Offences (excluding Motoring)</b>	258	89.6%	30	10.4%
<b>L Motoring Offences</b>	1,457	90.0%	161	10.0%
<b>Admin Finalisations</b>	0	0.0%	89	100.0%
<b>TOTAL</b>	<b>3,943</b>	<b>84.2%</b>	<b>742</b>	<b>15.8%</b>