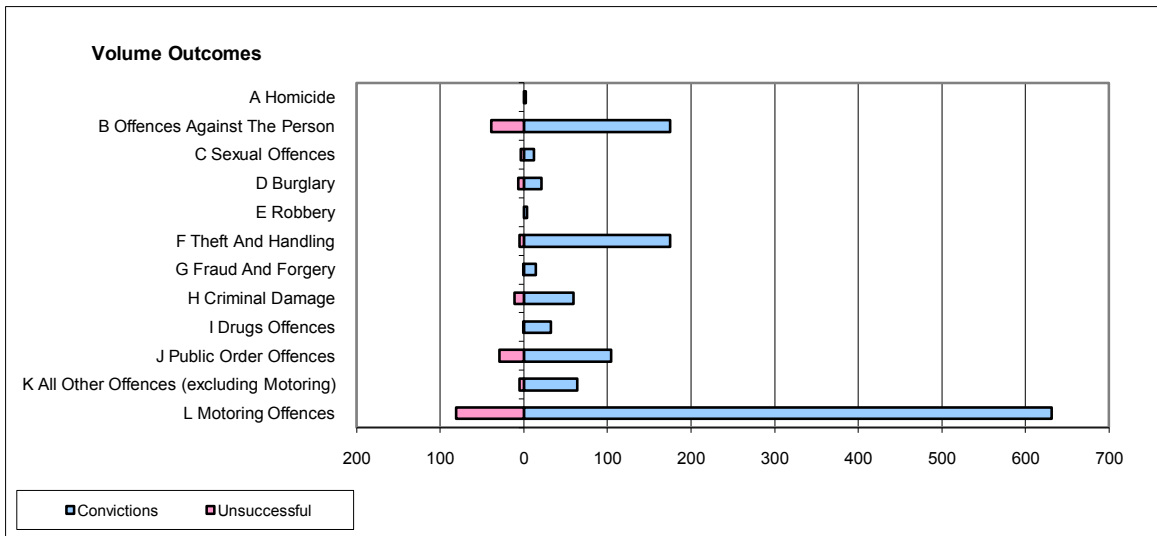
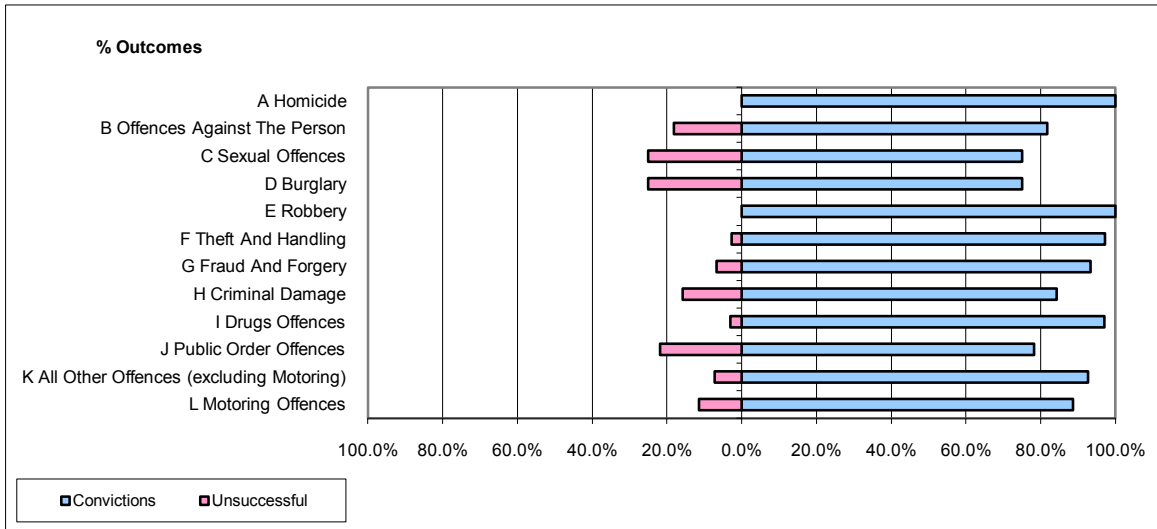


CPS OUTCOMES BY PRINCIPAL OFFENCE CATEGORY

September 2009

P40-WestMercia



	Convictions		Unsuccessful	
	Number of Defendants	%	Number of Defendants	%
A Homicide	2	100.0%	0	0.0%
B Offences Against The Person	175	81.8%	39	18.2%
C Sexual Offences	12	75.0%	4	25.0%
D Burglary	21	75.0%	7	25.0%
E Robbery	4	100.0%	0	0.0%
F Theft And Handling	175	97.2%	5	2.8%
G Fraud And Forgery	14	93.3%	1	6.7%
H Criminal Damage	59	84.3%	11	15.7%
I Drugs Offences	32	97.0%	1	3.0%
J Public Order Offences	104	78.2%	29	21.8%
K All Other Offences (excluding Motoring)	64	92.8%	5	7.2%
L Motoring Offences	631	88.6%	81	11.4%
Admin Finalisations	0	0.0%	13	100.0%
TOTAL	1,293	86.8%	196	13.2%