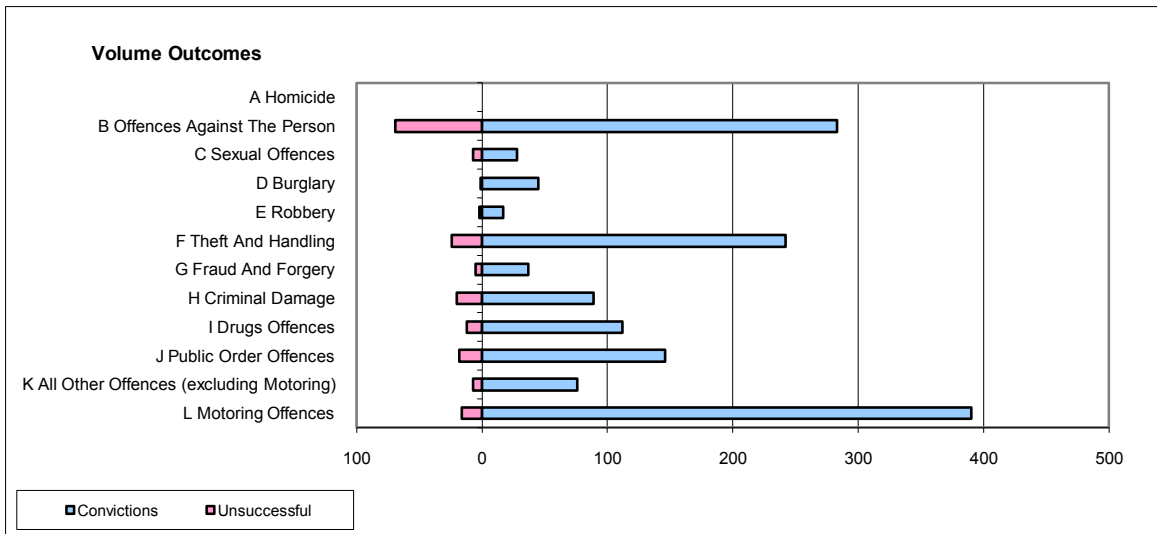
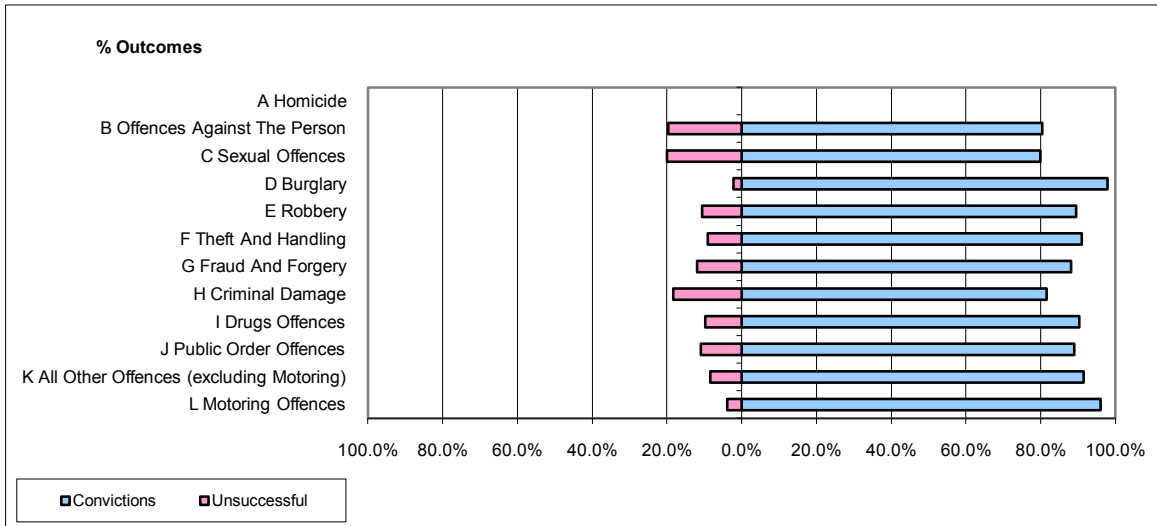


CPS OUTCOMES BY PRINCIPAL OFFENCE CATEGORY

September 2009

P37-Sussex



	Convictions		Unsuccessful	
	Number of Defendants	%	Number of Defendants	%
A Homicide	0	0	0	0
B Offences Against The Person	283	80.4%	69	19.6%
C Sexual Offences	28	80.0%	7	20.0%
D Burglary	45	97.8%	1	2.2%
E Robbery	17	89.5%	2	10.5%
F Theft And Handling	242	91.0%	24	9.0%
G Fraud And Forgery	37	88.1%	5	11.9%
H Criminal Damage	89	81.7%	20	18.3%
I Drugs Offences	112	90.3%	12	9.7%
J Public Order Offences	146	89.0%	18	11.0%
K All Other Offences (excluding Motoring)	76	91.6%	7	8.4%
L Motoring Offences	390	96.1%	16	3.9%
Admin Finalisations	0	0.0%	20	100.0%
TOTAL	1,465	87.9%	201	12.1%