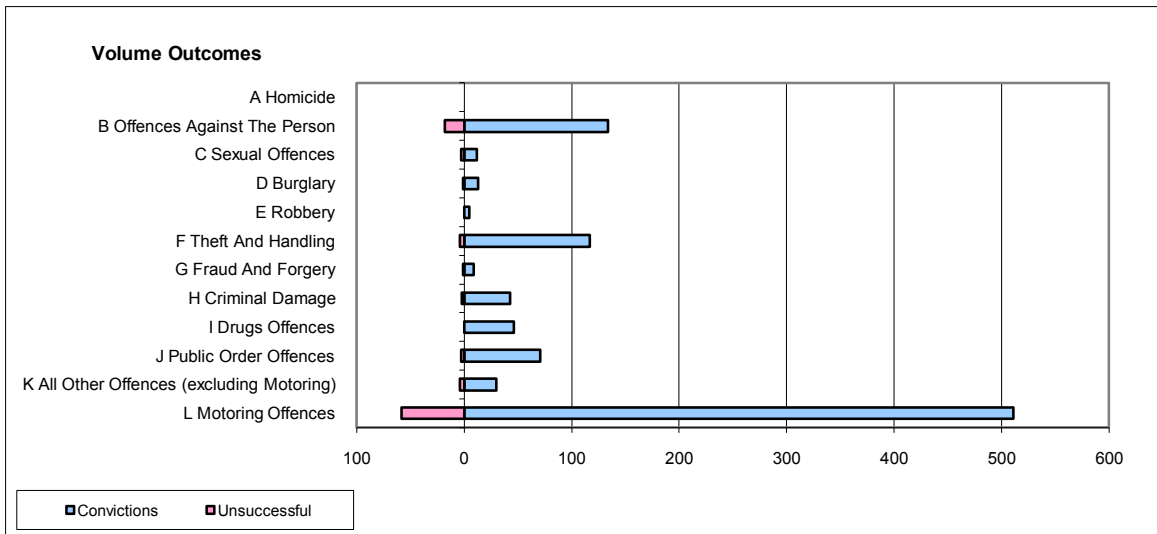
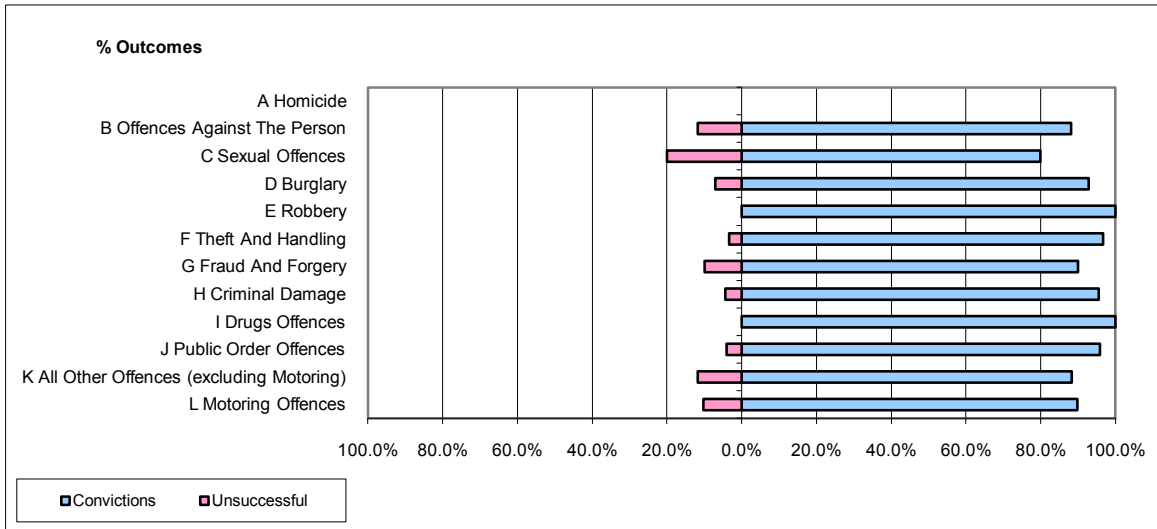


CPS OUTCOMES BY PRINCIPAL OFFENCE CATEGORY

September 2009

P35-Suffolk



	Convictions		Unsuccessful	
	Number of Defendants	%	Number of Defendants	%
A Homicide	0	0	0	0
B Offences Against The Person	134	88.2%	18	11.8%
C Sexual Offences	12	80.0%	3	20.0%
D Burglary	13	92.9%	1	7.1%
E Robbery	5	100.0%	0	0.0%
F Theft And Handling	117	96.7%	4	3.3%
G Fraud And Forgery	9	90.0%	1	10.0%
H Criminal Damage	43	95.6%	2	4.4%
I Drugs Offences	46	100.0%	0	0.0%
J Public Order Offences	71	95.9%	3	4.1%
K All Other Offences (excluding Motoring)	30	88.2%	4	11.8%
L Motoring Offences	511	89.8%	58	10.2%
Admin Finalisations	0	0.0%	16	100.0%
TOTAL	991	90.0%	110	10.0%