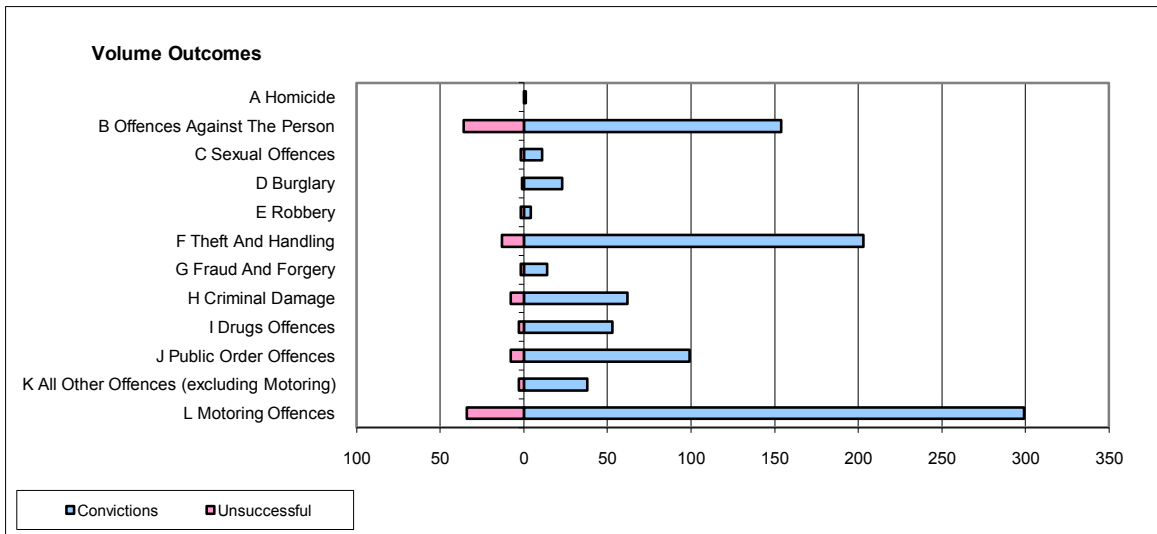
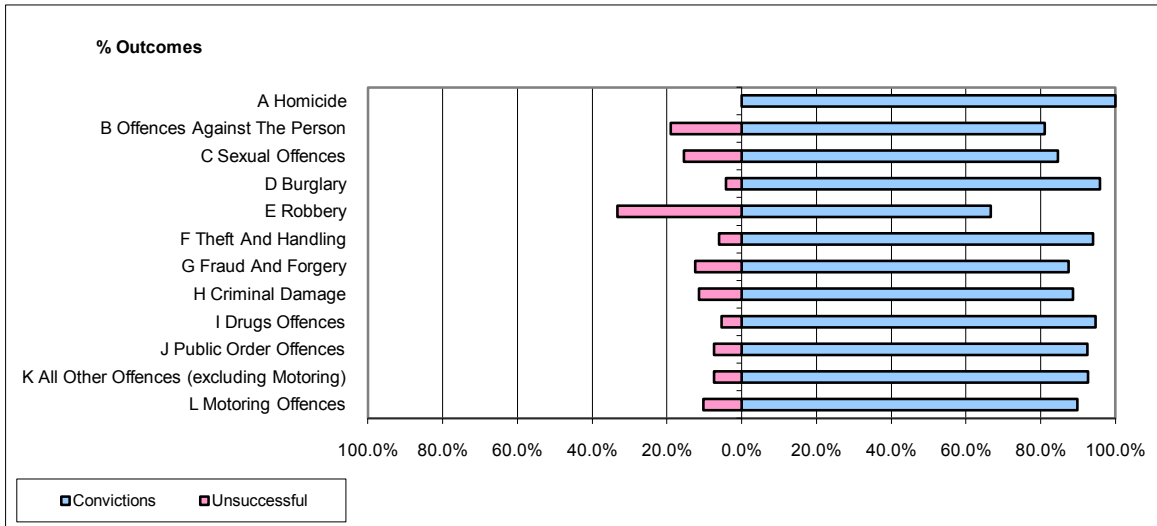


CPS OUTCOMES BY PRINCIPAL OFFENCE CATEGORY

September 2009

P26-Norfolk



	Convictions		Unsuccessful	
	Number of Defendants	%	Number of Defendants	%
A Homicide	1	100.0%	0	0.0%
B Offences Against The Person	154	81.1%	36	18.9%
C Sexual Offences	11	84.6%	2	15.4%
D Burglary	23	95.8%	1	4.2%
E Robbery	4	66.7%	2	33.3%
F Theft And Handling	203	94.0%	13	6.0%
G Fraud And Forgery	14	87.5%	2	12.5%
H Criminal Damage	62	88.6%	8	11.4%
I Drugs Offences	53	94.6%	3	5.4%
J Public Order Offences	99	92.5%	8	7.5%
K All Other Offences (excluding Motoring)	38	92.7%	3	7.3%
L Motoring Offences	299	89.8%	34	10.2%
Admin Finalisations	0	0.0%	12	100.0%
TOTAL	961	88.6%	124	11.4%