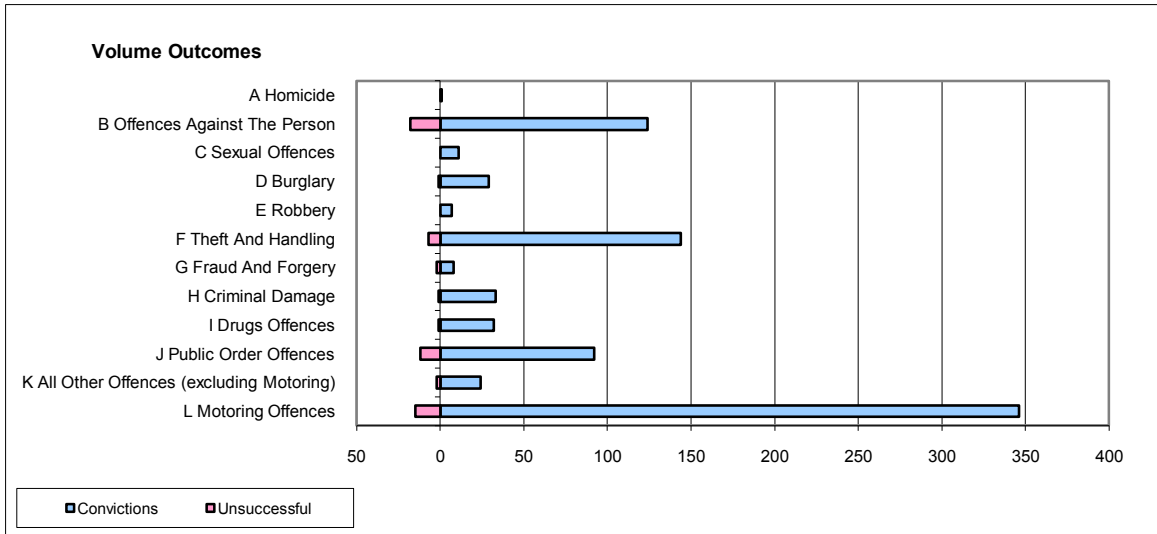
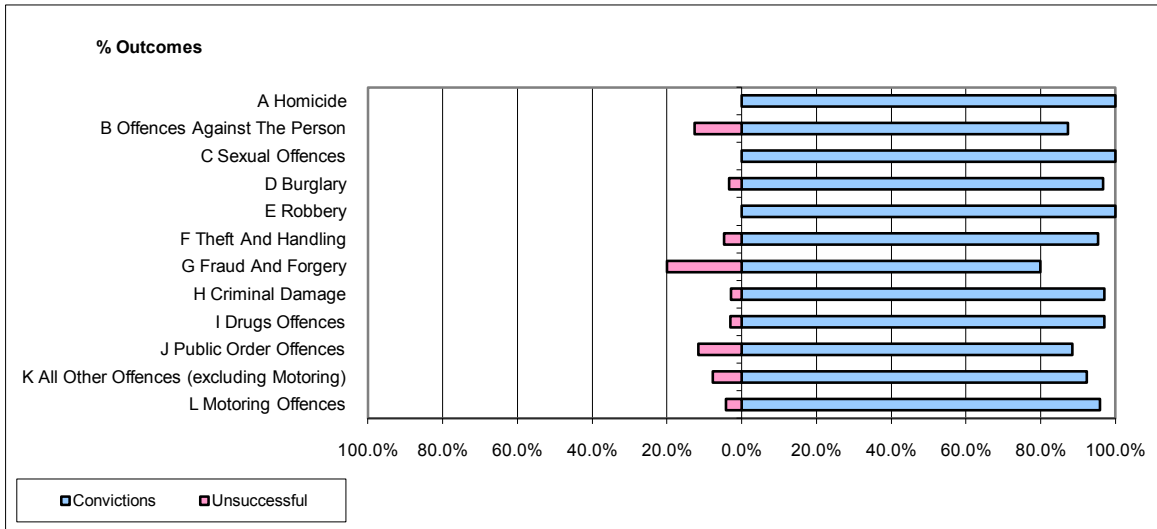


CPS OUTCOMES BY PRINCIPAL OFFENCE CATEGORY

September 2009

P23-Lincolnshire



| | Convictions | | Unsuccessful | |
|--|----------------------|--------------|----------------------|-------------|
| | Number of Defendants | % | Number of Defendants | % |
| A Homicide | 1 | 100.0% | 0 | 0.0% |
| B Offences Against The Person | 124 | 87.3% | 18 | 12.7% |
| C Sexual Offences | 11 | 100.0% | 0 | 0.0% |
| D Burglary | 29 | 96.7% | 1 | 3.3% |
| E Robbery | 7 | 100.0% | 0 | 0.0% |
| F Theft And Handling | 144 | 95.4% | 7 | 4.6% |
| G Fraud And Forgery | 8 | 80.0% | 2 | 20.0% |
| H Criminal Damage | 33 | 97.1% | 1 | 2.9% |
| I Drugs Offences | 32 | 97.0% | 1 | 3.0% |
| J Public Order Offences | 92 | 88.5% | 12 | 11.5% |
| K All Other Offences (excluding Motoring) | 24 | 92.3% | 2 | 7.7% |
| L Motoring Offences | 346 | 95.8% | 15 | 4.2% |
| Admin Finalisations | 0 | 0.0% | 12 | 100.0% |
| TOTAL | 851 | 92.3% | 71 | 7.7% |