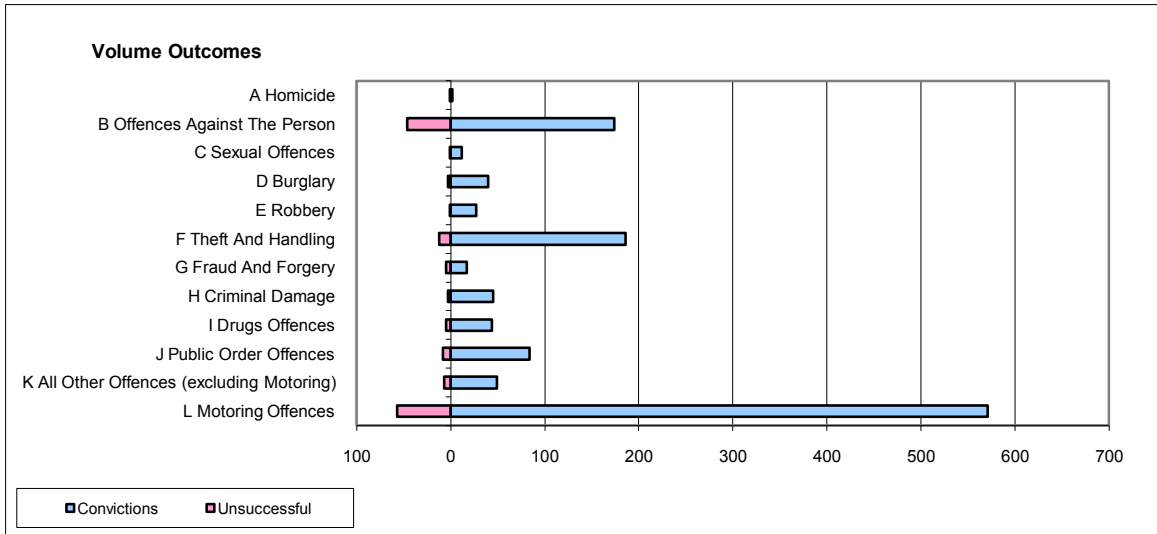
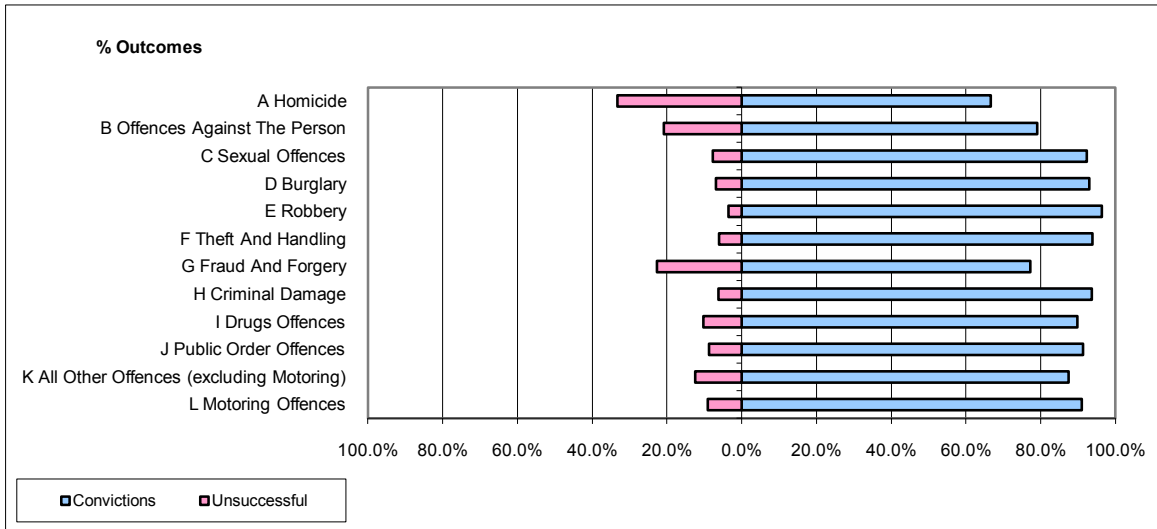


CPS OUTCOMES BY PRINCIPAL OFFENCE CATEGORY

September 2009

P22-Leicestershire



	Convictions		Unsuccessful	
	Number of Defendants	%	Number of Defendants	%
A Homicide	2	66.7%	1	33.3%
B Offences Against The Person	174	79.1%	46	20.9%
C Sexual Offences	12	92.3%	1	7.7%
D Burglary	40	93.0%	3	7.0%
E Robbery	27	96.4%	1	3.6%
F Theft And Handling	186	93.9%	12	6.1%
G Fraud And Forgery	17	77.3%	5	22.7%
H Criminal Damage	45	93.8%	3	6.3%
I Drugs Offences	44	89.8%	5	10.2%
J Public Order Offences	84	91.3%	8	8.7%
K All Other Offences (excluding Motoring)	49	87.5%	7	12.5%
L Motoring Offences	571	90.9%	57	9.1%
Admin Finalisations	0	0.0%	53	100.0%
TOTAL	1,251	86.1%	202	13.9%