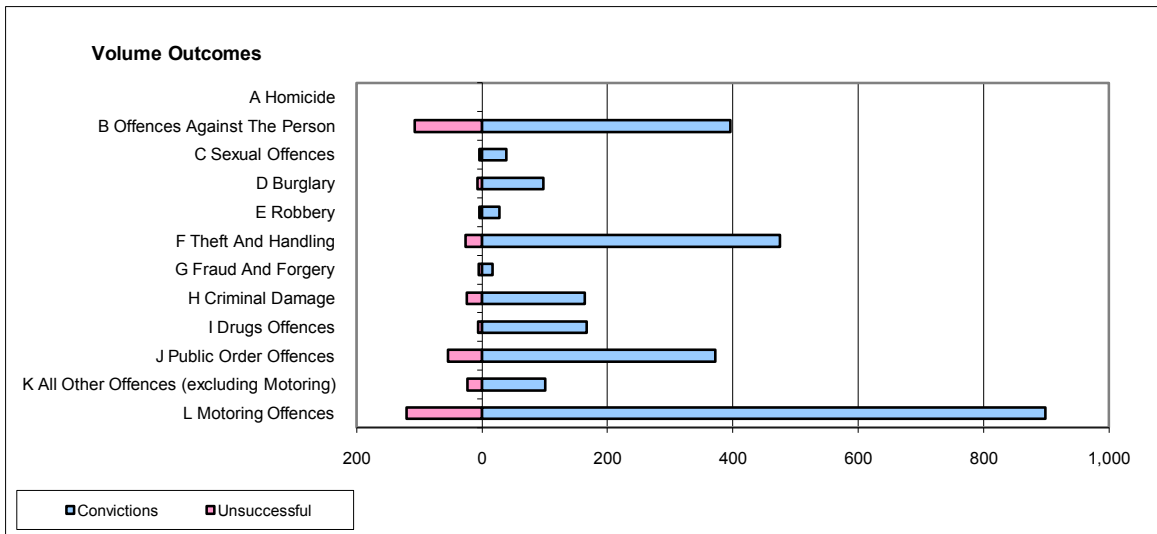
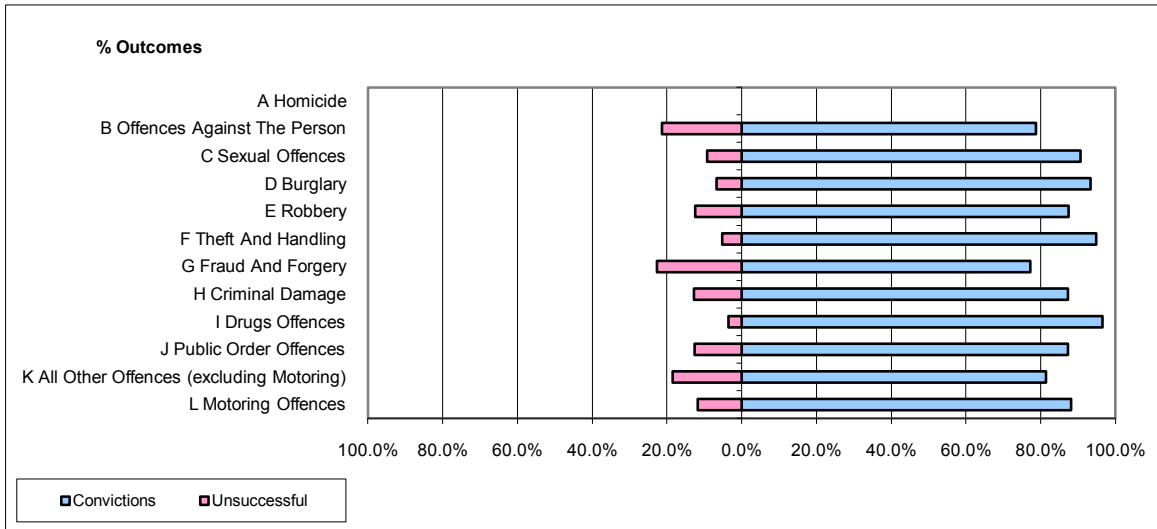


CPS OUTCOMES BY PRINCIPAL OFFENCE CATEGORY

September 2009

P21-Lancashire



	Convictions		Unsuccessful	
	Number of Defendants	%	Number of Defendants	%
A Homicide	0	0	0	0
B Offences Against The Person	396	78.7%	107	21.3%
C Sexual Offences	39	90.7%	4	9.3%
D Burglary	98	93.3%	7	6.7%
E Robbery	28	87.5%	4	12.5%
F Theft And Handling	475	94.8%	26	5.2%
G Fraud And Forgery	17	77.3%	5	22.7%
H Criminal Damage	164	87.2%	24	12.8%
I Drugs Offences	167	96.5%	6	3.5%
J Public Order Offences	372	87.3%	54	12.7%
K All Other Offences (excluding Motoring)	101	81.5%	23	18.5%
L Motoring Offences	898	88.2%	120	11.8%
Admin Finalisations	0	0.0%	47	100.0%
TOTAL	2,755	86.6%	427	13.4%