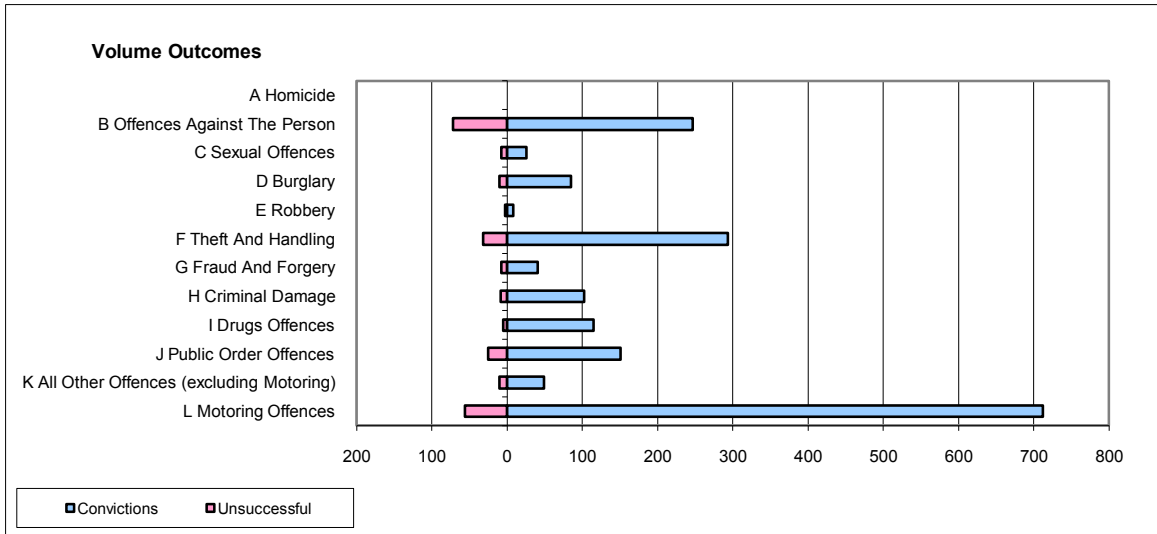
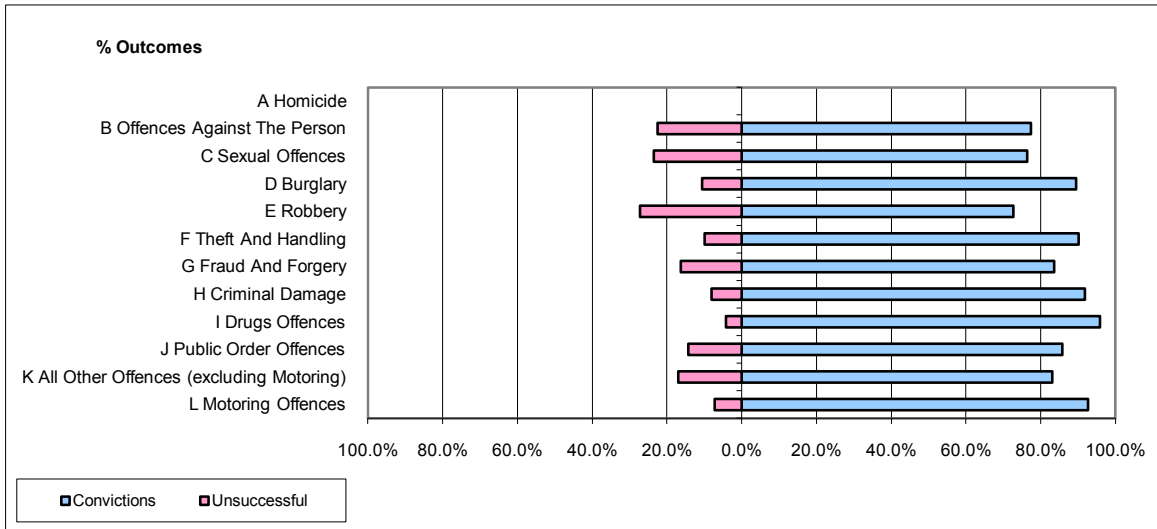


**CPS OUTCOMES BY PRINCIPAL OFFENCE CATEGORY**

**September 2009**

**P20-Kent**



	Convictions		Unsuccessful	
	Number of Defendants	%	Number of Defendants	%
<b>A Homicide</b>	<b>0</b>	<b>0</b>	<b>0</b>	<b>0</b>
<b>B Offences Against The Person</b>	<b>247</b>	<b>77.4%</b>	<b>72</b>	<b>22.6%</b>
<b>C Sexual Offences</b>	<b>26</b>	<b>76.5%</b>	<b>8</b>	<b>23.5%</b>
<b>D Burglary</b>	<b>85</b>	<b>89.5%</b>	<b>10</b>	<b>10.5%</b>
<b>E Robbery</b>	<b>8</b>	<b>72.7%</b>	<b>3</b>	<b>27.3%</b>
<b>F Theft And Handling</b>	<b>293</b>	<b>90.2%</b>	<b>32</b>	<b>9.8%</b>
<b>G Fraud And Forgery</b>	<b>41</b>	<b>83.7%</b>	<b>8</b>	<b>16.3%</b>
<b>H Criminal Damage</b>	<b>102</b>	<b>91.9%</b>	<b>9</b>	<b>8.1%</b>
<b>I Drugs Offences</b>	<b>115</b>	<b>95.8%</b>	<b>5</b>	<b>4.2%</b>
<b>J Public Order Offences</b>	<b>151</b>	<b>85.8%</b>	<b>25</b>	<b>14.2%</b>
<b>K All Other Offences (excluding Motoring)</b>	<b>49</b>	<b>83.1%</b>	<b>10</b>	<b>16.9%</b>
<b>L Motoring Offences</b>	<b>712</b>	<b>92.7%</b>	<b>56</b>	<b>7.3%</b>
<b>Admin Finalisations</b>	<b>0</b>	<b>0.0%</b>	<b>18</b>	<b>100.0%</b>
<b>TOTAL</b>	<b>1,829</b>	<b>87.7%</b>	<b>256</b>	<b>12.3%</b>