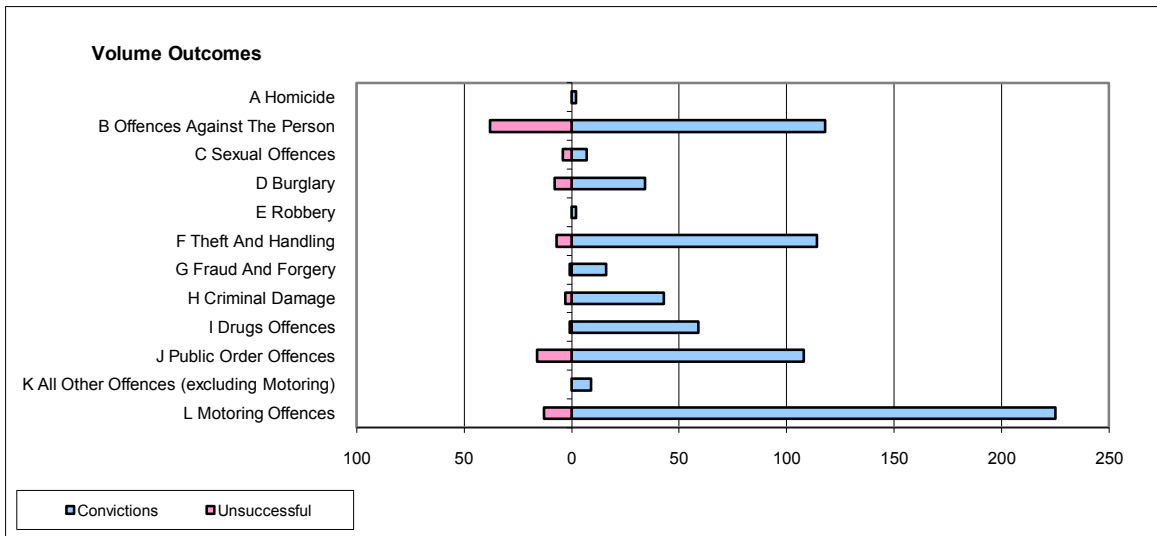
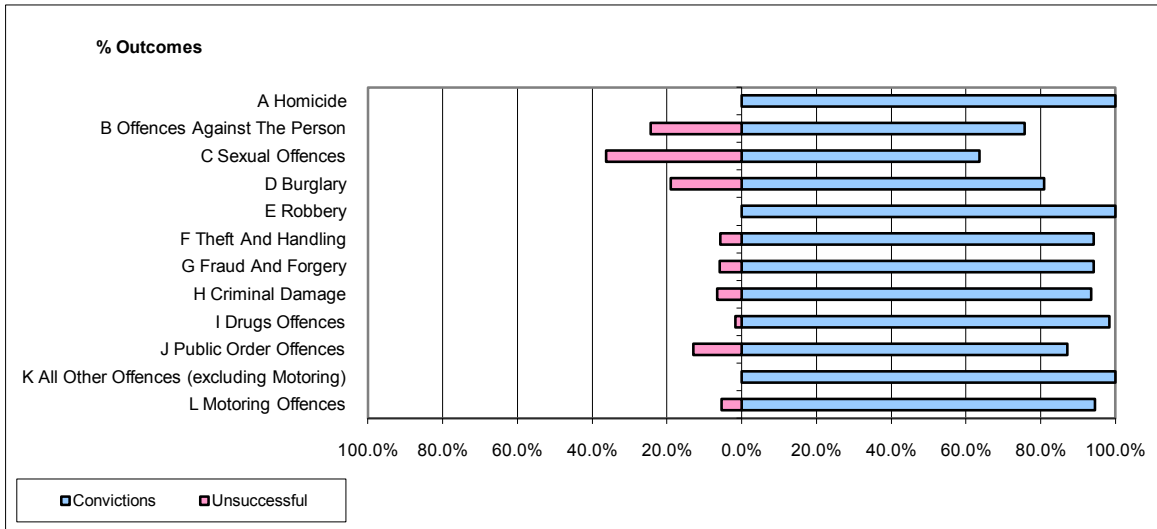


CPS OUTCOMES BY PRINCIPAL OFFENCE CATEGORY

September 2009

P16-Gwent



	Convictions		Unsuccessful	
	Number of Defendants	%	Number of Defendants	%
A Homicide	2	100.0%	0	0.0%
B Offences Against The Person	118	75.6%	38	24.4%
C Sexual Offences	7	63.6%	4	36.4%
D Burglary	34	81.0%	8	19.0%
E Robbery	2	100.0%	0	0.0%
F Theft And Handling	114	94.2%	7	5.8%
G Fraud And Forgery	16	94.1%	1	5.9%
H Criminal Damage	43	93.5%	3	6.5%
I Drugs Offences	59	98.3%	1	1.7%
J Public Order Offences	108	87.1%	16	12.9%
K All Other Offences (excluding Motoring)	9	100.0%	0	0.0%
L Motoring Offences	225	94.5%	13	5.5%
Admin Finalisations	0	0.0%	5	100.0%
TOTAL	737	88.5%	96	11.5%