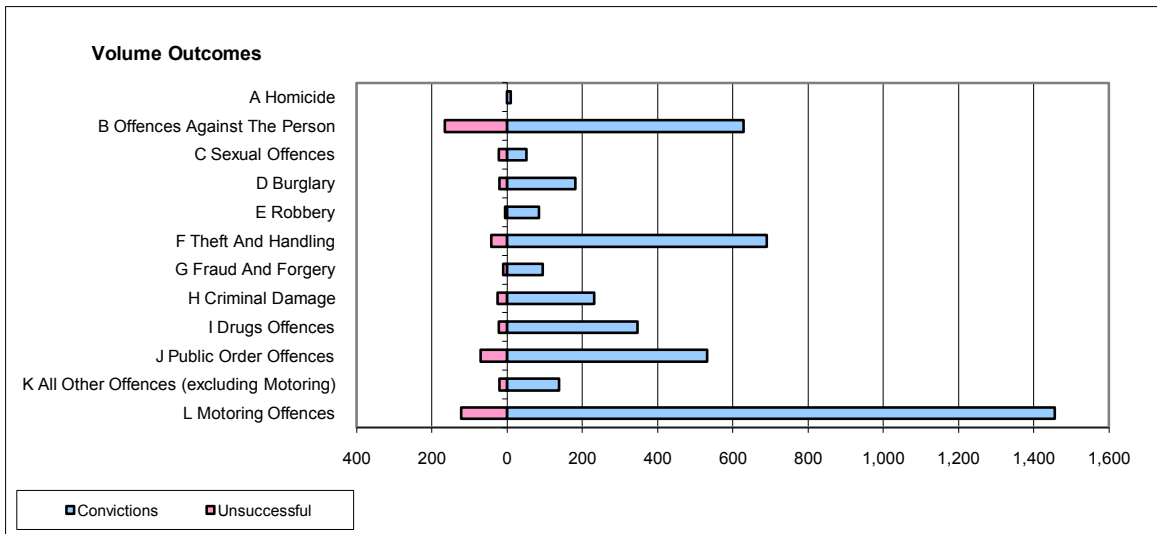
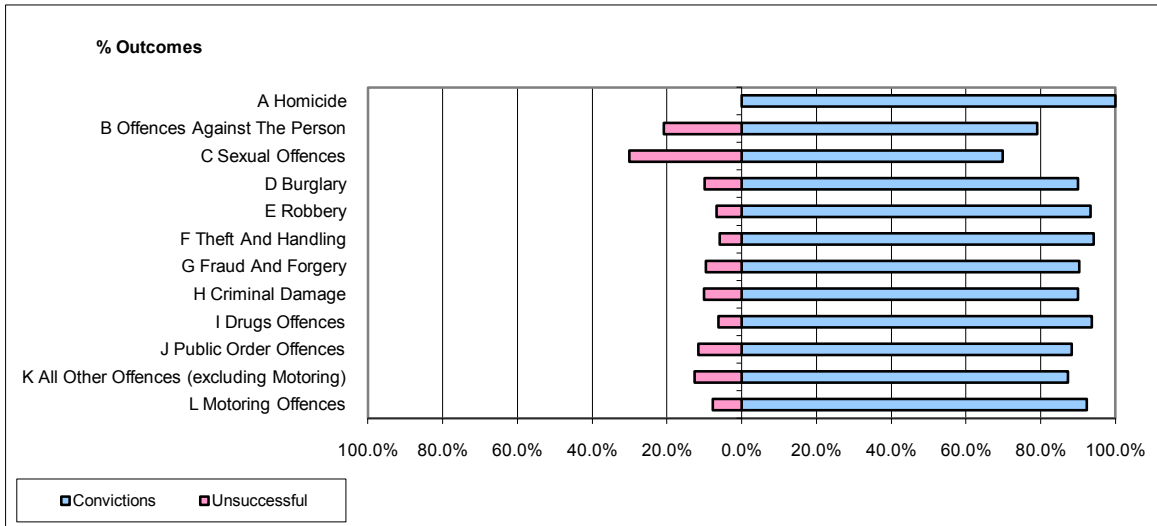


CPS OUTCOMES BY PRINCIPAL OFFENCE CATEGORY

September 2009

P15-GreaterManchester



	Convictions		Unsuccessful	
	Number of Defendants	%	Number of Defendants	%
A Homicide	9	100.0%	0	0.0%
B Offences Against The Person	629	79.1%	166	20.9%
C Sexual Offences	51	69.9%	22	30.1%
D Burglary	181	90.0%	20	10.0%
E Robbery	84	93.3%	6	6.7%
F Theft And Handling	690	94.1%	43	5.9%
G Fraud And Forgery	94	90.4%	10	9.6%
H Criminal Damage	232	89.9%	26	10.1%
I Drugs Offences	346	93.8%	23	6.2%
J Public Order Offences	531	88.4%	70	11.6%
K All Other Offences (excluding Motoring)	138	87.3%	20	12.7%
L Motoring Offences	1,455	92.3%	122	7.7%
Admin Finalisations	0	0.0%	84	100.0%
TOTAL	4,440	87.9%	612	12.1%