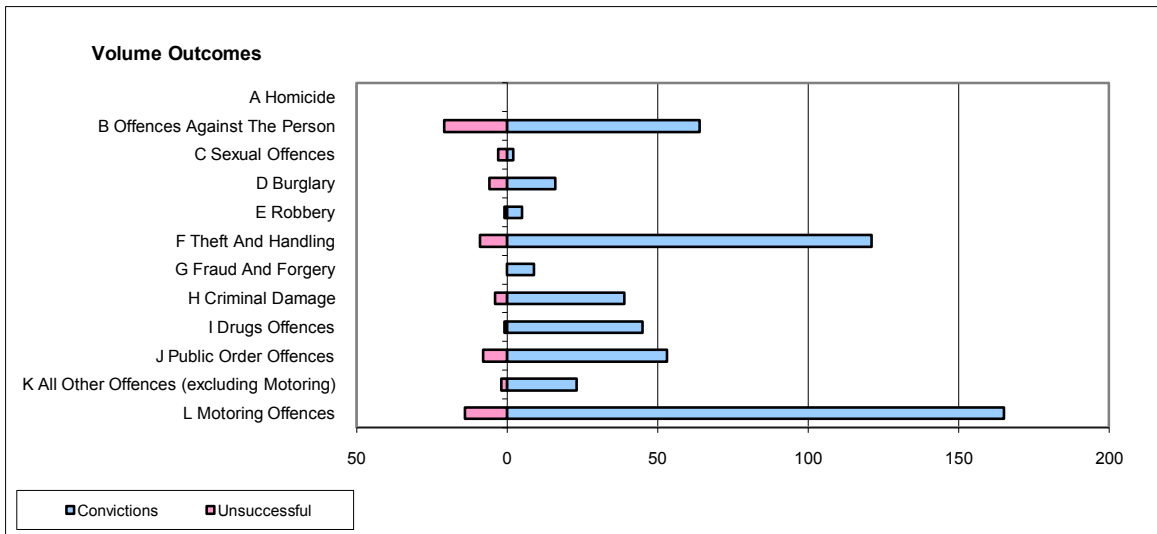
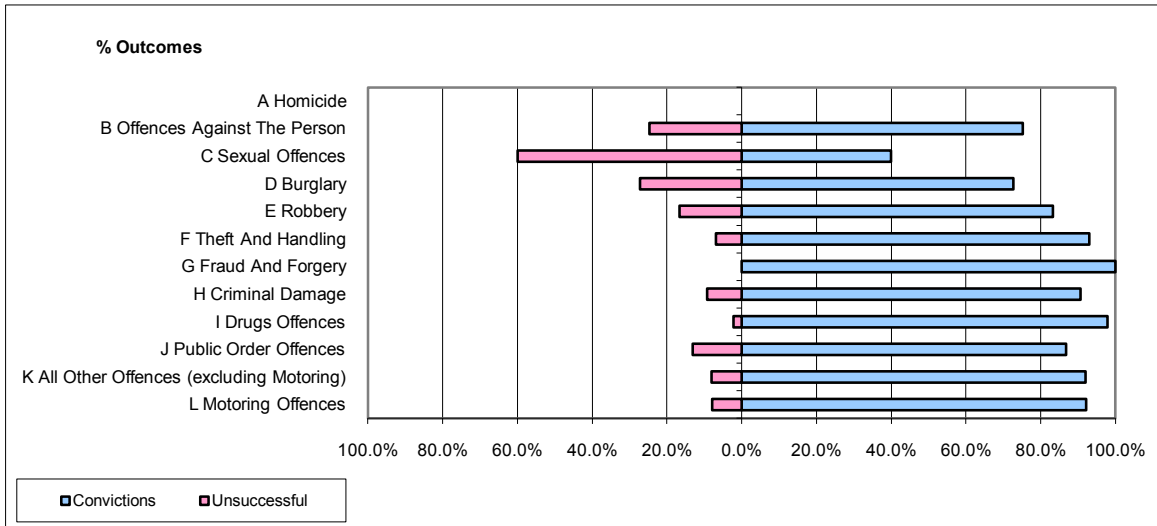


CPS OUTCOMES BY PRINCIPAL OFFENCE CATEGORY

September 2009

P14-Gloucestershire



	Convictions		Unsuccessful	
	Number of Defendants	%	Number of Defendants	%
A Homicide	0	0	0	0
B Offences Against The Person	64	75.3%	21	24.7%
C Sexual Offences	2	40.0%	3	60.0%
D Burglary	16	72.7%	6	27.3%
E Robbery	5	83.3%	1	16.7%
F Theft And Handling	121	93.1%	9	6.9%
G Fraud And Forgery	9	100.0%	0	0.0%
H Criminal Damage	39	90.7%	4	9.3%
I Drugs Offences	45	97.8%	1	2.2%
J Public Order Offences	53	86.9%	8	13.1%
K All Other Offences (excluding Motoring)	23	92.0%	2	8.0%
L Motoring Offences	165	92.2%	14	7.8%
Admin Finalisations	0	0.0%	7	100.0%
TOTAL	542	87.7%	76	12.3%