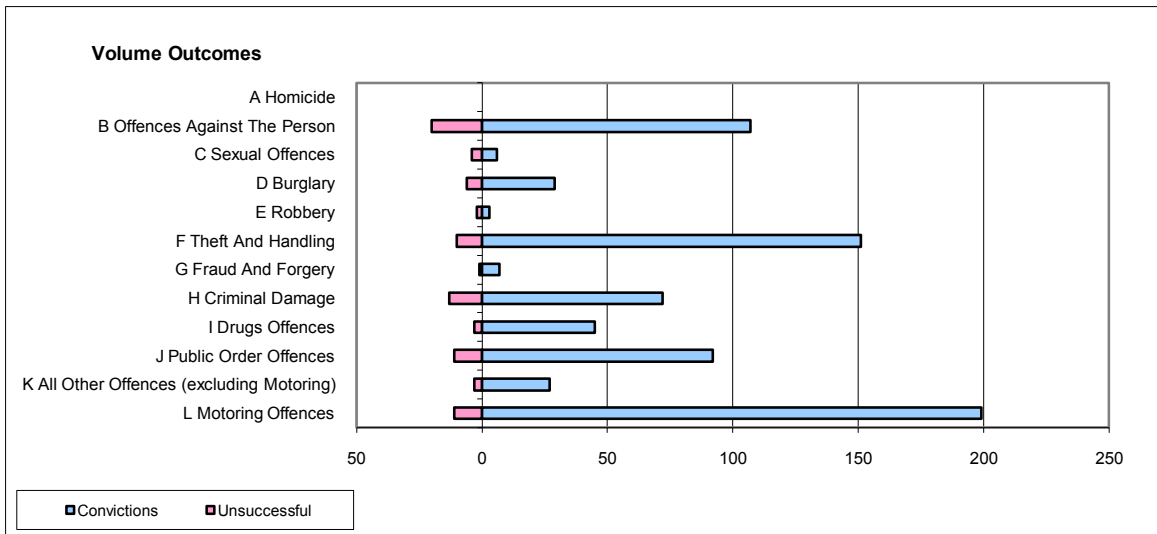
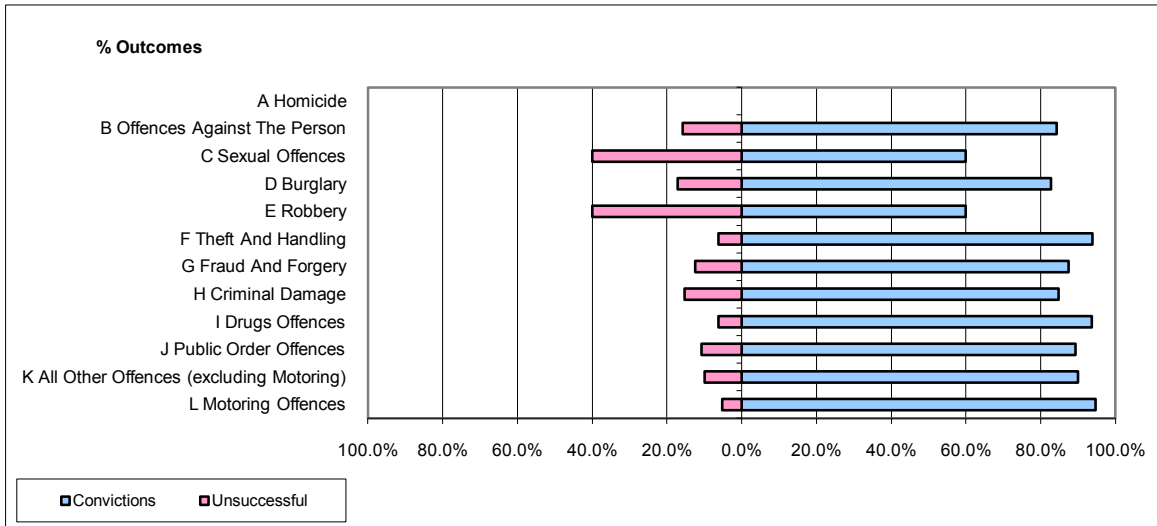


CPS OUTCOMES BY PRINCIPAL OFFENCE CATEGORY

September 2009

P11-Durham



	Convictions		Unsuccessful	
	Number of Defendants	%	Number of Defendants	%
A Homicide	0	0	0	0
B Offences Against The Person	107	84.3%	20	15.7%
C Sexual Offences	6	60.0%	4	40.0%
D Burglary	29	82.9%	6	17.1%
E Robbery	3	60.0%	2	40.0%
F Theft And Handling	151	93.8%	10	6.2%
G Fraud And Forgery	7	87.5%	1	12.5%
H Criminal Damage	72	84.7%	13	15.3%
I Drugs Offences	45	93.8%	3	6.3%
J Public Order Offences	92	89.3%	11	10.7%
K All Other Offences (excluding Motoring)	27	90.0%	3	10.0%
L Motoring Offences	199	94.8%	11	5.2%
Admin Finalisations	0	0.0%	6	100.0%
TOTAL	738	89.1%	90	10.9%