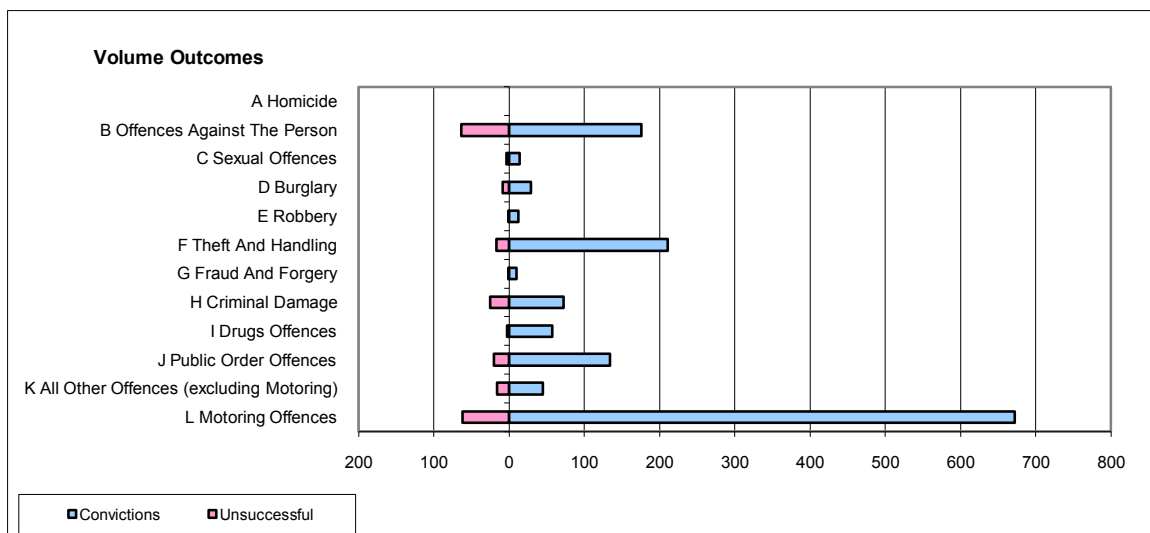
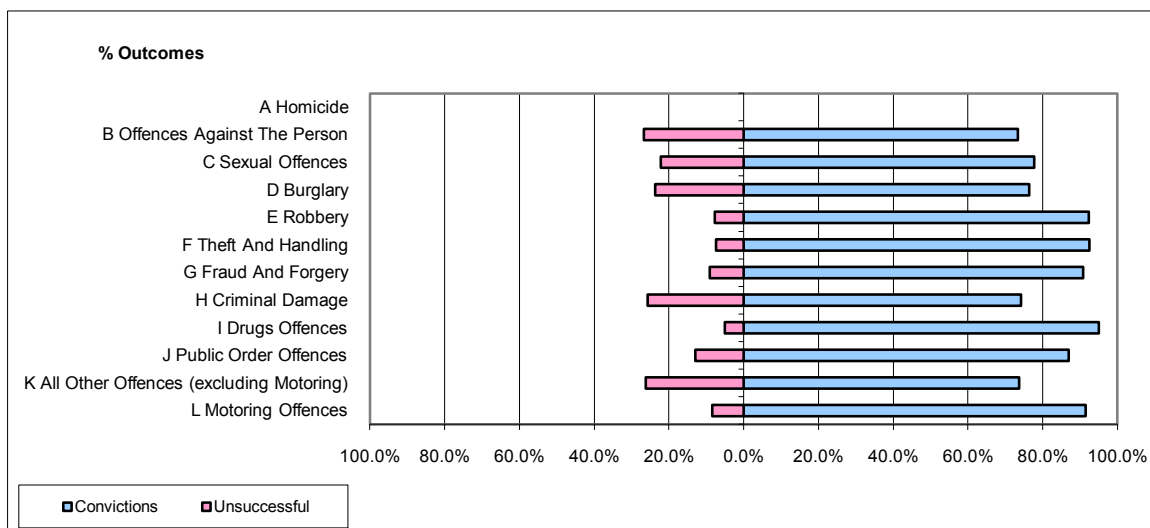


CPS OUTCOMES BY PRINCIPAL OFFENCE CATEGORY

September 2009

P04-Cheshire



	Convictions		Unsuccessful	
	Number of Defendants	%	Number of Defendants	%
A Homicide	0	0	0	0
B Offences Against The Person	176	73.3%	64	26.7%
C Sexual Offences	14	77.8%	4	22.2%
D Burglary	29	76.3%	9	23.7%
E Robbery	12	92.3%	1	7.7%
F Theft And Handling	211	92.5%	17	7.5%
G Fraud And Forgery	10	90.9%	1	9.1%
H Criminal Damage	72	74.2%	25	25.8%
I Drugs Offences	57	95.0%	3	5.0%
J Public Order Offences	134	87.0%	20	13.0%
K All Other Offences (excluding Motoring)	45	73.8%	16	26.2%
L Motoring Offences	672	91.6%	62	8.4%
Admin Finalisations	0	0.0%	13	100.0%
TOTAL	1,432	85.9%	235	14.1%