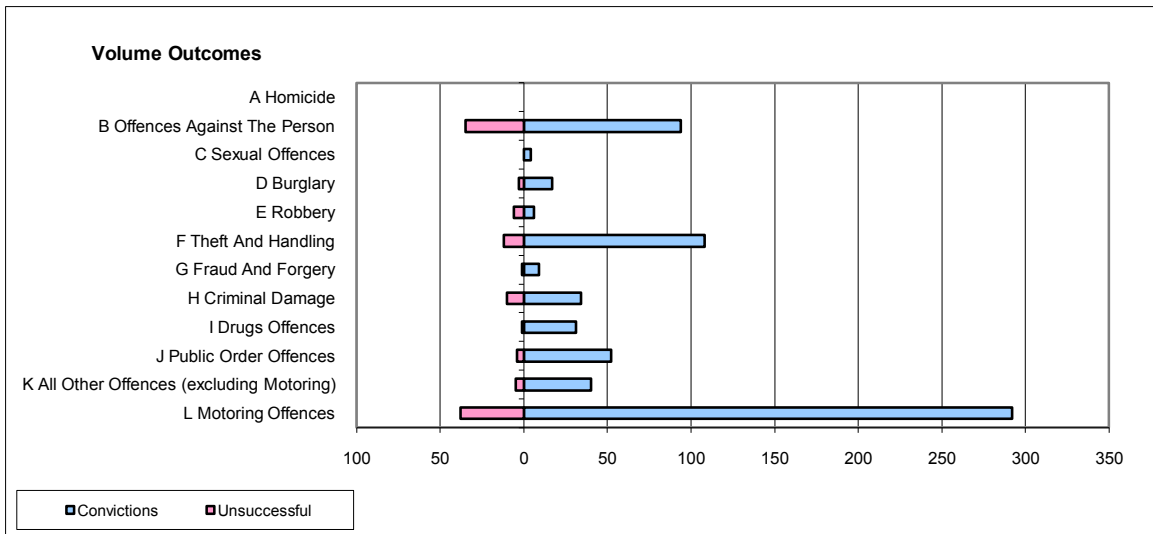
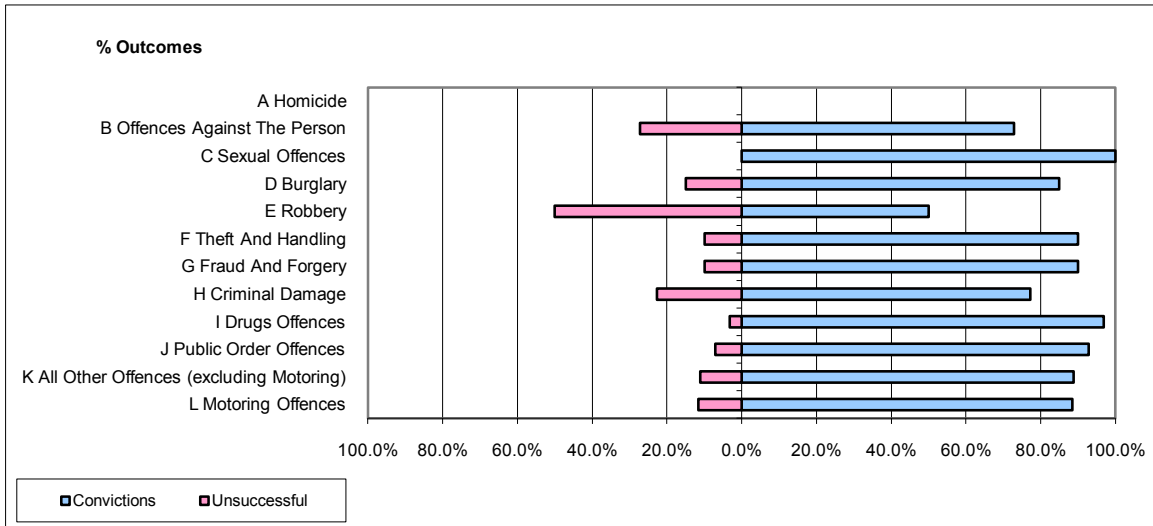


**CPS OUTCOMES BY PRINCIPAL OFFENCE CATEGORY**

**September 2009**

**P02-Bedfordshire**



	Convictions		Unsuccessful	
	Number of Defendants	%	Number of Defendants	%
<b>A Homicide</b>	0	0	0	0
<b>B Offences Against The Person</b>	94	72.9%	35	27.1%
<b>C Sexual Offences</b>	4	100.0%	0	0.0%
<b>D Burglary</b>	17	85.0%	3	15.0%
<b>E Robbery</b>	6	50.0%	6	50.0%
<b>F Theft And Handling</b>	108	90.0%	12	10.0%
<b>G Fraud And Forgery</b>	9	90.0%	1	10.0%
<b>H Criminal Damage</b>	34	77.3%	10	22.7%
<b>I Drugs Offences</b>	31	96.9%	1	3.1%
<b>J Public Order Offences</b>	52	92.9%	4	7.1%
<b>K All Other Offences (excluding Motoring)</b>	40	88.9%	5	11.1%
<b>L Motoring Offences</b>	292	88.5%	38	11.5%
<b>Admin Finalisations</b>	0	0.0%	7	100.0%
<b>TOTAL</b>	<b>687</b>	<b>84.9%</b>	<b>122</b>	<b>15.1%</b>