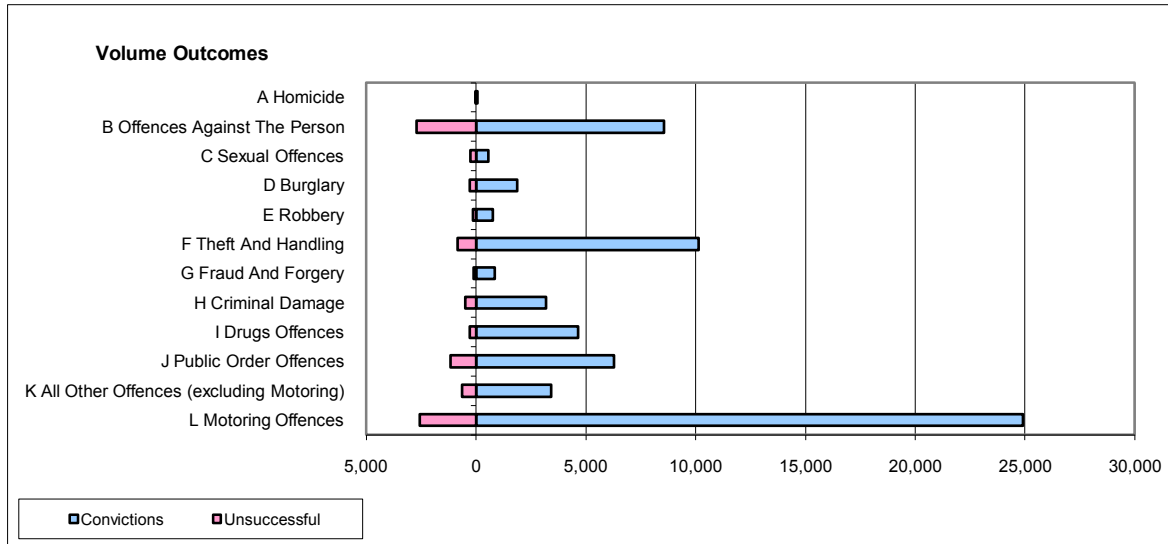
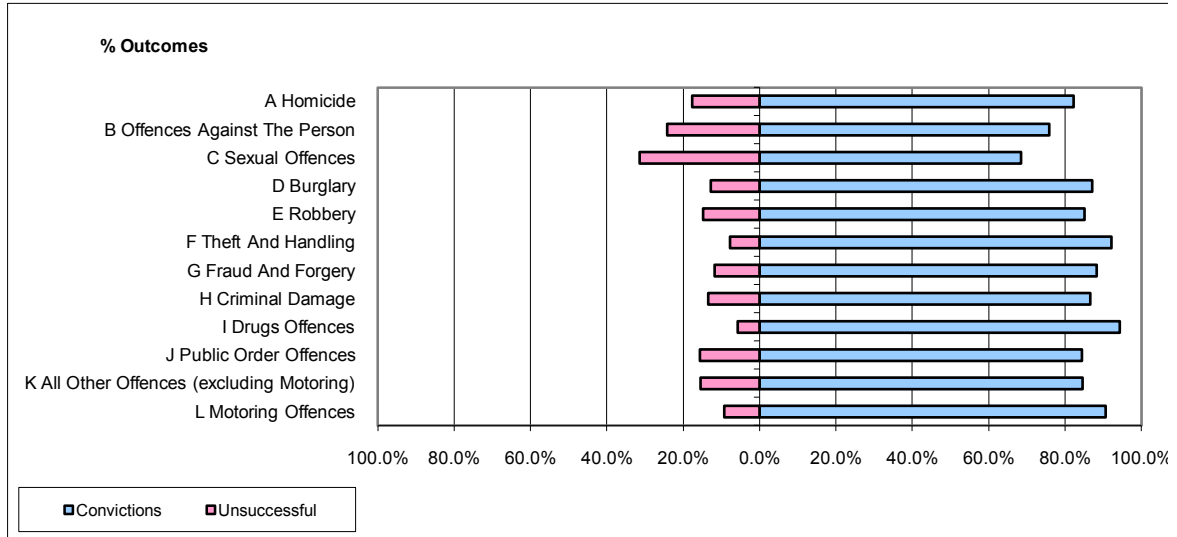


**CPS OUTCOMES BY PRINCIPAL OFFENCE CATEGORY**

**August 2009**

**42 Areas**



	Convictions		Unsuccessful	
	Number of Defendants	%	Number of Defendants	%
<b>A Homicide</b>	56	82.4%	12	17.6%
<b>B Offences Against The Person</b>	8,554	75.9%	2,718	24.1%
<b>C Sexual Offences</b>	562	68.5%	258	31.5%
<b>D Burglary</b>	1,879	87.2%	276	12.8%
<b>E Robbery</b>	774	85.1%	135	14.9%
<b>F Theft And Handling</b>	10,147	92.2%	855	7.8%
<b>G Fraud And Forgery</b>	844	88.3%	112	11.7%
<b>H Criminal Damage</b>	3,196	86.6%	495	13.4%
<b>I Drugs Offences</b>	4,640	94.3%	280	5.7%
<b>J Public Order Offences</b>	6,276	84.5%	1,155	15.5%
<b>K All Other Offences (excluding Motoring)</b>	3,415	84.6%	623	15.4%
<b>L Motoring Offences</b>	24,903	90.7%	2,558	9.3%
<b>Admin Finalisations</b>	0	0.0%	1,015	100.0%
<b>TOTAL</b>	<b>65,246</b>	<b>86.1%</b>	<b>10,492</b>	<b>13.9%</b>