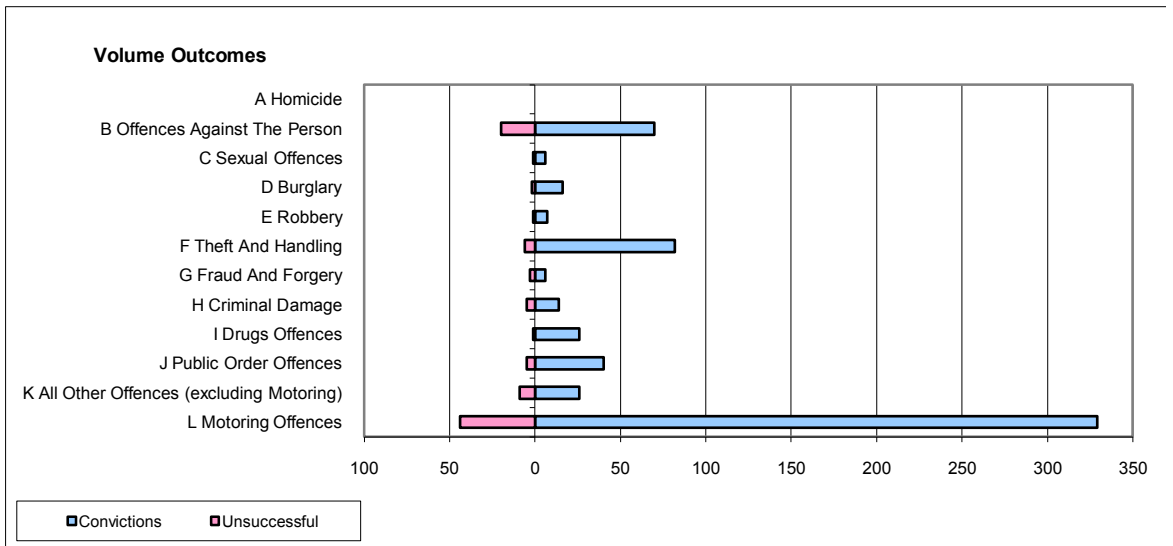
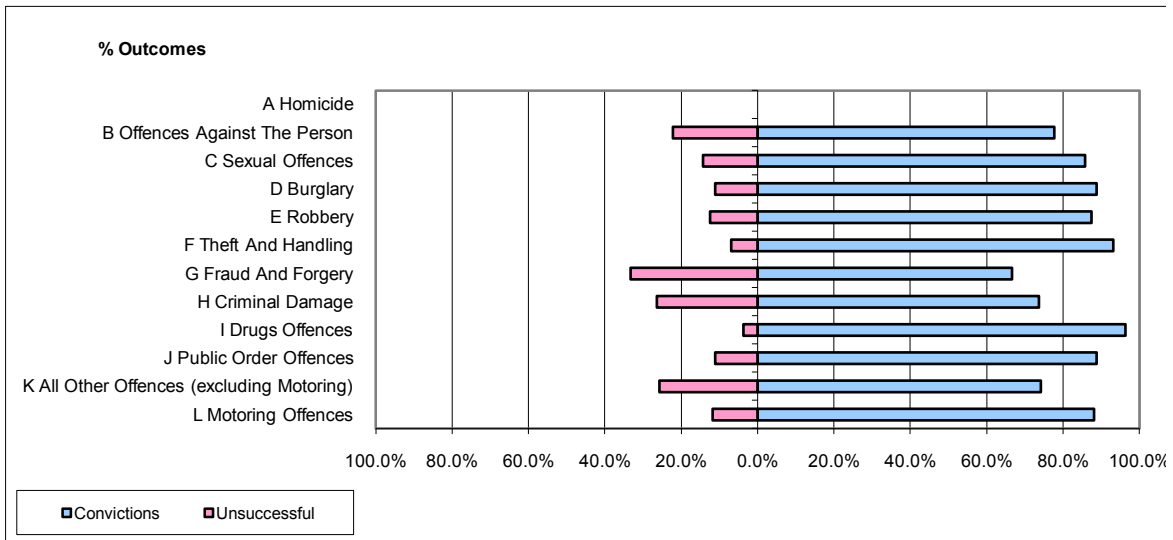


CPS OUTCOMES BY PRINCIPAL OFFENCE CATEGORY

August 2009

P43-Wiltshire



	Convictions		Unsuccessful	
	Number of Defendants	%	Number of Defendants	%
A Homicide	0	0	0	0
B Offences Against The Person	70	77.8%	20	22.2%
C Sexual Offences	6	85.7%	1	14.3%
D Burglary	16	88.9%	2	11.1%
E Robbery	7	87.5%	1	12.5%
F Theft And Handling	82	93.2%	6	6.8%
G Fraud And Forgery	6	66.7%	3	33.3%
H Criminal Damage	14	73.7%	5	26.3%
I Drugs Offences	26	96.3%	1	3.7%
J Public Order Offences	40	88.9%	5	11.1%
K All Other Offences (excluding Motoring)	26	74.3%	9	25.7%
L Motoring Offences	329	88.2%	44	11.8%
Admin Finalisations	0	0.0%	5	100.0%
TOTAL	622	85.9%	102	14.1%